

# AAC 09

PRODUCT FACT SHEET



## AAC 09

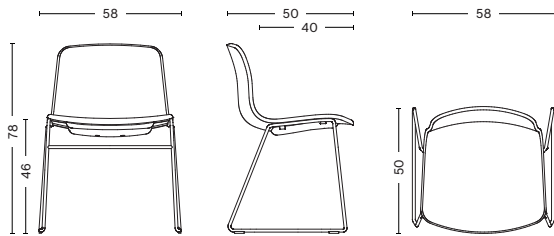
DESIGN BY HEE WELLING & HAY, 2010

About A Chair AAC 09 features an open frame in bent steel that adds lightness to the intuitive design. Its upright, yet rounded shell combines functional stackability with great comfort and an inviting expression. The open sled frame is available in powder coated finishes, while the shell comes in diverse colour and upholstery options, allowing a multitude of design combinations that make this series so versatile.

### HIGHLIGHTS

- Part of a multi-functional family of dining and conference chairs, office chairs, bar stools, lounge chairs, tables, an ottoman and a sofa.
- Variability of textiles, colours and base finishes.
- Available with plastic shell, with front upholstery (AAC 08) and full upholstery (AAC 09) in a large selection of fabrics and leathers.
- Other base options are: 4-leg steel base, swivel base, wheel base, solid wood legs and moulded plywood legs.
- Shell is also available with armrest.
- Stackable on floor up to 5 pcs.
- Stackable on trolley up to 5 pcs.
- Suitable for a wide variety of private and public environments.
- Qualified for contract use.

### DIMENSIONS



WIDTH 58 CM | 22.83"  
DEPTH 50 CM | 19.69"  
HEIGHT 78 CM | 30.71"  
SEAT HEIGHT 46 CM | 18.11"  
SEAT DEPTH 40 CM | 15.75"

### MATERIALS

#### SHELL

Injection moulded polypropylene shell without armrest. Full upholstery. Shell thickness 10 mm polypropylene with 10 mm foam

#### BASE

Sled base Ø12 mm in solid steel.

#### STACKING COVER

Polypropylene, soft black.

#### GLIDER

Plastic. Standard on all variants. Suitable for all floorings that are not too sensitive.

### OPTIONS

Felt gliders for wooden floors  
CMHR foam (fire retardant)

### CONSTRUCTION

Sled base in solid steel Ø12 mm. Stacking pad in polypropylene is mounted underneath the shell.

### COUNTRY OF ORIGIN

Poland

## BASE COLOUR & FINISH

Please note that the colour codes are indicative.



WHITE  
POWDER  
COATED STEEL  
RAL 9003



BLACK  
POWDER  
COATED STEEL  
RAL 9005

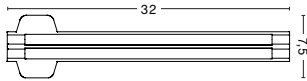
## FABRIC & LEATHER UPHOLSTERY

Please see our Fabric Overview for approved standard fabrics.

[LINK TO OVERVIEW](#)

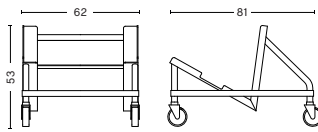
---

## ACCESSORIES



### FLOOR LINKING DEVICE

Grey plastic. Please note, the linking device is not premounted to the frame.



### AAC CHAIR TROLLEY

Black powdercoated steel. Rear wheels with brake. Suitable for transportation and storage.

### TROLLEY CAPACITY

Max 20 pcs. without upholstery and max 5 pcs. with upholstery.

We recommend stacking mat for leather upholstery.

[LINK TO CHAIR TROLLEYS PRESENTATION](#)

## **SUSTAINABILITY**

HAY focuses on developing long-lasting products that minimise our environmental impact. We optimise the use of sustainable materials such as recycled materials, FSC-certified wood and water-based lacquer, with a growing number of eco-certified products. We have strict regulatory requirements, and the majority of our products are tested to comply with international standards for strength, durability and safety.

[LINK TO ENVIRONMENTAL PROFILE](#)

## **TESTS**

EN 16139:2013

Furniture - Strength, durability and safety - Requirements for non-domestic seating.

L2 Extreme use - Loading according to Test severity L2.

## **WARRANTY**

HAY provides a 5-year product warranty.

Please contact the HAY sales team for further information about the warranty terms and conditions.

## **CARE & MAINTENANCE**

Our Care & Maintenance offers guidance for optimal maintenance of your HAY product. It includes advice and instructions on cleaning and caring for specific materials to prolong the life of your furniture. Find the guide at [hay.com](http://hay.com).

[LINK TO CARE & MAINTENANCE](#)

## **DOWNLOADS**

Packshots and lifestyle photos, 2D 3D files, care and maintenance, instructions, test certificates, product fact sheets, and product presentations are available in our Image Bank at [hay.com](http://hay.com).

[LINK TO IMAGE BANK](#)