

PH 2/1 Stem Fitting

The fixture is designed based on the principle of a reflective three-shade system, which directs the majority of the light downwards. The shades are made of mouth-blown opal three-layer glass, which is glossy on the top and sandblasted matt on the underside, giving a soft and diffuse light distribution.



Product info

Mounting

Suspension type: Cable 2x0,75mm². Canopy: Yes. Cable length: 3,5m.

Finish

High lustre chrome plated. White opal glass.

Materials

Shades: Mouth-blown white opal glass. Body: High lustre chrome plated, brass. Socket cover: High lustre chrome plated, spun aluminium.

Sizes and weights

Width x Height x Length (mm) | 596 x 551 x 596 Max 3.5 kg

Class

Ingress protection IP20. Electric shock protection II w/o ground.

Specification notes

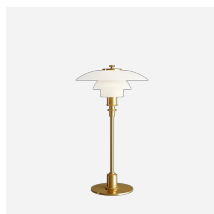
The innovation of light sources is ongoing. Consequently we only inform about the max. wattages. On www.louispoulsen.com we update a list of recommendable light sources.

Light source

3x20W E14



Product family



PH 2/1 Table



PH 2/1 Wall



PH 2/1 Pendant

Product variants

Light source

3x20W E14

Design

Poul Henningsen

Weight

3.481

Finish

High lustre chrome plated

Spare parts & accessories

| Product | Variant number |
|--|----------------|
| PH 2-1, MIDDLE SHADE, GLASS | 5741084940 |
| PH 2-1, LOWER SHADE, GLASS | 5741084953 |
| PH 2-1, TOP SHADE, GLASS, TABLE/WALL | 5741084937 |
| PH 2-1, SPRINGHOLDER W/SPRINGS | 5741086333 |
| PH 2-1 GLASS,BOM.TOPSHADE W/BAL.RING | 5741084885 |
| CANOPY CLASSIC,POLISHED CHROME PLATED V2 | 5741481721 |