

ACX

Antonio Citterio, 2023

vitra.





ACX is the tenth office swivel chair that Vitra has developed in collaboration with Antonio Citterio. With its automatic synchronised mechanism, the compact ACX offers maximum comfort for every user without any need for adjustments other than seat height – while exhibiting a distinctly non-technical appearance. The construction, materials, production, logistics and maintenance of ACX are designed to achieve a long life cycle with the smallest possible carbon footprint.

The ACX mechanism automatically adjusts to a wide range of user weights: even very lightweight or heavier individuals can sit down and enjoy instant comfort and optimum support throughout the full scope of movement, without having to adjust anything except the seat height. That makes ACX particularly suitable for environments in which dynamic collaboration processes have replaced sitting for long periods in the same chair.

The design of ACX features a limited number of components, which simplifies service and maintenance. The parts are made of recycled materials whenever possible and can be easily separated and recycled again at the end of the product's life. Depending on the chosen model, ACX is therefore up to 100% recyclable.

ACX has a casual and relaxed appearance: with its clean lines and choice of knitted fabrics in a wide selection of colours, it functions as a design element in the office – instead of a necessary addition tolerated for the purpose of ergonomics.

ACX is the ideal chair in any setting that calls for healthy ergonomic seating with an understated inviting aesthetic along with a focus on longevity and compliance with stringent ecological standards.

ACX Mesh

Antonio Citterio, 2023

vitra.



ACX Mesh differs from the two other models in the task chair family – ACX Light und Soft – in that its backrest has a knitted fabric cover. This semi-transparent mesh textile is made of recycled polyester and comes in a choice of seven colours – which combined with either a dark or light frame enables numerous variants. The seat cover also comes in the same knitted fabric or in the textile Plano.

Materials

- **Seat mechanism:** synchronised mechanism with automatic weight adjustment and two backrest resistance settings (hard or soft). Equipped as standard with seat height and seat depth adjustment. Optionally available with or without synchronised forward tilt (can be disengaged). Mechanism can be locked in upright sitting position. Seat mechanism matches the frame colour (deep black or soft grey).
- **Seat upholstery:** polyurethane foam or PU-foam-free padding with formfit seat (F). Knit or fabric seat cover.
- **Backrest:** back frame with semi-closed shell and slightly transparent knit cover. Frame made of polypropylene (deep black or soft grey). Optional height-adjustable lumbar cushion.
- **Armrests:** height-adjustable armrests or 3D armrests with adjustable height, width and depth. Armrest supports made of polyamide in deep black or soft grey (to match frame colour). With PU-foam-free (F) pads in basic dark (for frame colour basic dark) or dim grey (for frame colour soft grey). Available either with fixed armrests in polypropylene (deep black or soft grey to match frame colour) or without armrests.
- **Base:** five-star base made of polyamide in deep black or soft grey (to match frame colour), with double castors (Ø 60 mm).
- **Packaging:** standard delivery assembled in plastic bag. On request and at extra charge: delivery assembled in a cardboard box or unassembled in a flatpack (to be assembled by trained specialists).

ACX Soft

Antonio Citterio, 2023

vitra.



ACX Soft stands out from the other two models in the ACX family – Light and Mesh – in that its backrest has a padded knit cover. This soft comfortable textile made of recycled polyester lends the task chair a particularly inviting appearance. Available in a choice of seven colours, the knitted fabric can be combined with a light or dark chair frame, allowing for a wide variety of configurations. The seat cover can be selected in the same knitted fabric or in the textile Plano.

Materials

- **Seat mechanism:** synchronised mechanism with automatic weight adjustment and two backrest resistance settings (hard or soft). Equipped as standard with seat height and seat depth adjustment. Optionally available with or without synchronised forward tilt (can be disengaged). Mechanism can be locked in upright sitting position. Seat mechanism matches the frame colour (deep black or soft grey).
- **Seat upholstery:** polyurethane foam or PU-foam-free padding with formfit seat (F). Knit or fabric seat cover.
- **Backrest:** back frame with semi-closed shell and quilted knit cover with upholstered effect. Frame made of polypropylene (deep black or soft grey). Optional height-adjustable lumbar cushion.
- **Armrests:** height-adjustable armrests or 3D armrests with adjustable height, width and depth. Armrest supports made of polyamide in deep black or soft grey (to match frame colour). With PU-foam-free (F) pads in basic dark (for frame colour basic dark) or dim grey (for frame colour soft grey). Available either with fixed armrests in polypropylene (deep black or soft grey to match frame colour) or without armrests.
- **Base:** five-star base made of polyamide in deep black or soft grey (to match frame colour), with double castors (Ø 60 mm).
- **Packaging:** standard delivery assembled in plastic bag. On request and at extra charge: delivery assembled in a cardboard box or unassembled in a flatpack (to be assembled by trained specialists).

ACX Light

Antonio Citterio, 2023

vitra.

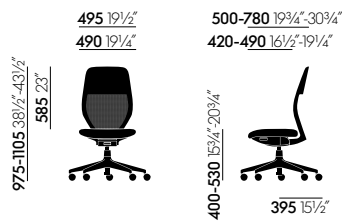


ACX Light is the entry-level model in the task chair family and available only in black. It differs from ACX Mesh and Soft through its backrest, which has a standard netweave cover. Combined with a seat in the technical spacer fabric Silk Mesh, the chair is designed to offer pleasant comfort and facilitate air circulation.

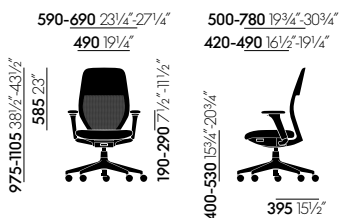
Materials

- **Seat mechanism:** synchronised mechanism with automatic weight adjustment and two backrest resistance settings (hard or soft). Equipped as standard with seat height and seat depth adjustment. Optionally available with or without synchronised forward tilt (can be disengaged). Mechanism can be locked in upright sitting position. Seat mechanism matches frame colour (deep black).
- **Seat upholstery:** polyurethane foam. Seat cover in Silk Mesh spacer fabric, colour nero.
- **Backrest:** back frame with semi-closed shell and transparent netweave cover. Frame made of polypropylene in deep black. Optional height-adjustable lumbar cushion.
- **Armrests:** height-adjustable. Armrest supports made of polyamide in deep black. With PU-foam-free (F) pads in deep black. Optionally available without armrests.
- **Base:** five-star base in polyamide (deep black) with double castors (Ø 60 mm).
- **Packaging:** standard delivery assembled in plastic bag. On request and at extra charge: delivery assembled in a cardboard box or unassembled in a flatpack (to be assembled by trained specialists).

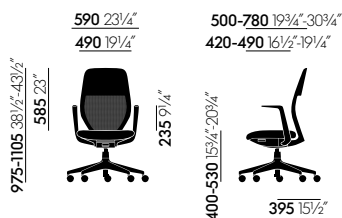
DIMENSIONS



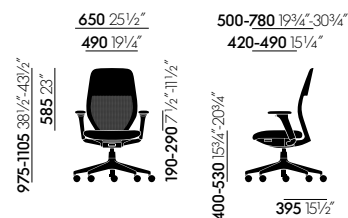
ACX Mesh without armrests



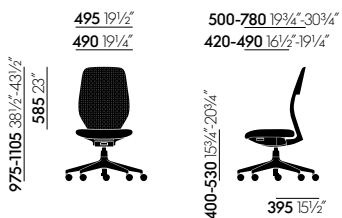
ACX Mesh with 3D armrests



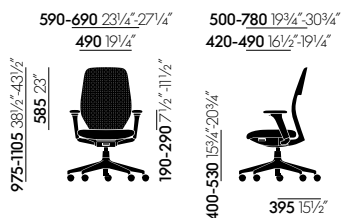
ACX Mesh with fixed armrests



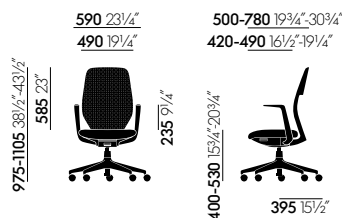
ACX Mesh with height-adjustable armrests



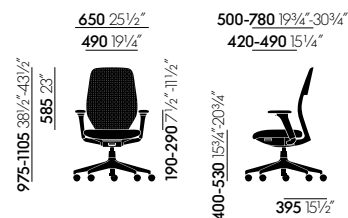
ACX Soft without armrests



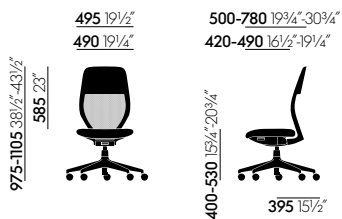
ACX Soft with 3D armrests



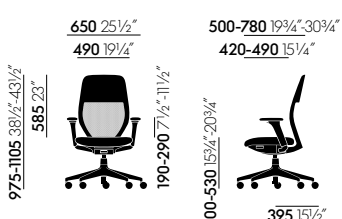
ACX Soft with fixed armrests



ACX Soft with height-adjustable armrests

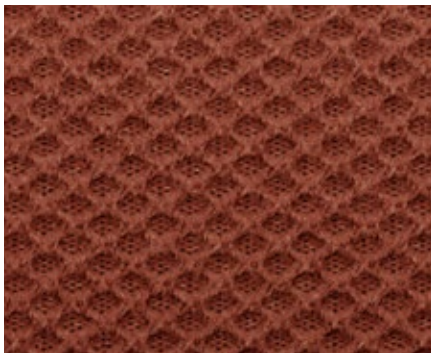


ACX Light without armrests

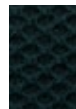


ACX Light with height-adjustable armrests

Knitted Mesh (ACX Mesh)



02
terracotta



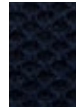
05
pine green



03
dark red



06
carbon



04
dark blue



07
nero



01
stone grey

Quilted Knit (ACX Soft)



02
terracotta



05
pine green



03
dark red



06
carbon



04
dark blue

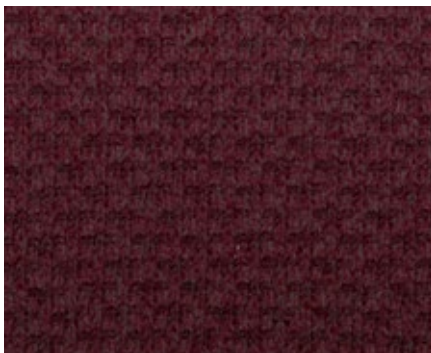


07
nero



01
stone grey

Grid Knit (ACX Mesh, Soft)



02
terracotta



05
pine green



03
dark red



06
carbon



04
dark blue



07
nero



01
stone grey

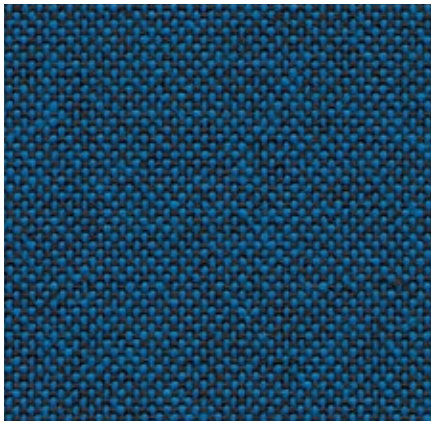
X-Net (ACX Light)



01
nero

Plano Home/Office, F30 (ACX Mesh, ACX Soft)

vitra.



Plano is a robust plain weave with a flat, even texture. The wide palette of duotones with new, delicate washed-out shades includes many relatively neutral hues, a good number of which are coordinated with the Hopsak colour range. Thanks to its durability and longevity, Plano is also an ideal choice for office furnishings.

Plano is available in 39 colours.

Material	100% polyester
Weight	265 g/m ² (7.8 oz/y ²)
Width	142 cm +/- 2 cm (56'')
Abrasion resistance	80,000 Martindale
Fastness to light	Type 6
Pilling	Grade 4-5
Fastness to rubbing	Grade 4-5 dry and wet

 05 cream white/ sierra grey	 34 grass green/ forest	 12 light grey/ice blue	 81 blue/coconut	 19 sierra grey	 73 nero/coconut
 18 light grey/sierra grey	 61 classic green/ cognac	 17 forest/sierra grey	 86 dark blue/brown	 74 sierra grey/nero	 66 nero
 39 yellow/pastel green	 41 classic green/ forest	 40 coconut/forest	 13 nero/ice blue	 69 dark grey	 54 brown
 68 avocado	 52 mint/forest	 43 petrol/nero	 87 nero/cream white	 62 dark grey/nero	 75 marron/nero

 67 cognac	 72 poppy red	 84 poppy red/ champagne	
 11 marron/cognac	 07 orange	 15 pink/sierra grey	 99 cognac/parchment
 98 dark red/nero	 96 red/cognac	 16 dark red/ice blue	 20 tobacco/cream white
 97 red/coconut	 63 red/poppy red	 80 coffee	 03 parchment/ cream white

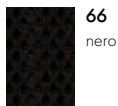
Silk Mesh Home/Office (ACX Light)

vitra.

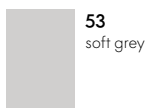


Silk Mesh is a three-dimensional spacer fabric. Thanks to the air cells in the regular honeycomb structure, the fabric not only provides a comfortable cushioning effect but also ensures a pleasant seating climate. Silk Mesh is extremely robust and well suited for use in office environments.

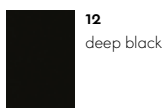
Material	33% polyamide, 67% polyester
Weight	300 g/m ² (8.8 oz/y ²)
Width	170 cm +/- 3 cm (67")
Abrasion resistance	100,000 Martindale
Fastness to light	Type 6
Pilling	Grade 4-5
Fastness to rubbing	Grade 4-5 dry and wet



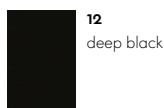
66
nero



53
soft grey



12
deep black



12
deep black

Frame (ACX Mesh,
ACX Soft)

Frame (ACX Light)

