

Eames Storage Unit ESU

Charles & Ray Eames, 1949

vitra.



ESU Bookcase, ESU Shelves

In 1949, Charles and Ray Eames developed an innovative system of freestanding, multifunctional shelves and desks. Similar to the simultaneously constructed Eames House, these designs adhered to the principles of industrial production: the Eames Storage Unit (ESU) and the Eames Desk Unit (EDU).

In collaboration with the Eames Office and Dutch designer Hella Jongerius, a carefully defined new colour scheme was chosen to give the ESU and EDU a fresh and contemporary look while still celebrating the spirit of the 1940s and '50s. The wider ESU Shelf is available in various heights, from a sideboard to a tall bookshelf. The ESU Bookcase is somewhat narrower and fitted with drawers and sliding doors to provide practical storage options.

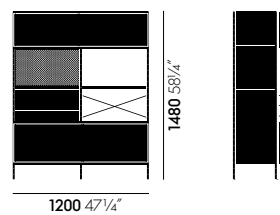
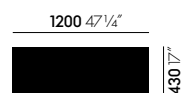
Materials

- **Metal surfaces:** black powder-coated finish.
- **Shelves:** maple plywood with birch face veneer (Poland and Finland), transparent lacquer finish.
- **Panels:** powder-coated aluminium.
- **Legs:** individual levelling adjustment.
- **Applications:** recommended for home use only.

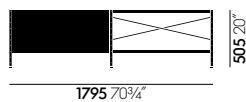
ESU Bookcase

- **Sliding doors:** moulded plywood lacquered

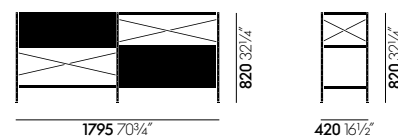
DIMENSIONS



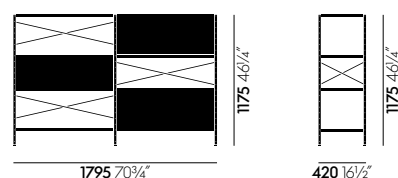
ESU Bookcase



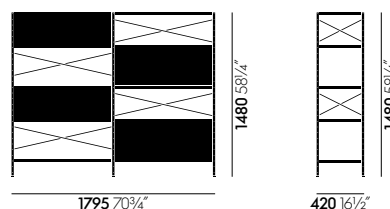
ESU Shelf, 1 HU



ESU Shelf, 2 HU



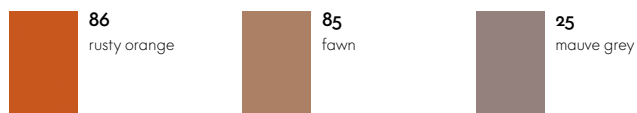
ESU Shelf, 3 HU



ESU Shelf, 4 HU

SURFACES AND COLOURS

ESU Shelf, 1 HU



Panels

ESU Shelf, 2 HU



Panels

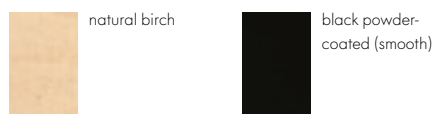
ESU Shelf, 3 HU

ESU Shelf, 4 HU

ESU Bookcase



Panels



Shelf

Metal

