

Audo



UPHOLSTERY

JUNE 2024, UK

AUDO UPHOLSTERY PROGRAMME

Textile

The Audio Upholstery Program is an overview of the textile and leathers available for Audio upholstered furniture. All textile and leather options are available in all colors. You'll find over 100 fabric and leather options, with the most popular configurations available with expedited delivery in our Quick Ship program. Custom upholstery orders from our Audio Upholstery Program (SPEC) are ready to ship with standard delivery lead times. Our Fixed Combinations listed in this Brand Book are suggested upholsteries selected by our design team, and deliver with standard lead times.

We are happy to upholster furniture using customer's own materials (COM) with extended delivery lead times, upon fabric approval. COM products are to be calculated by PC1T if in textile and PC1L if in leather, excluding the price of the fabric.

Please note that the color references in this upholstery programme are only intended as a guide. For further information please see manufacturer websites, or contact your local Audio Sales Representative for samples or further information.

KVADRAT.DK
SAHCO.COM
NEVOTEX.COM
JAB.DE
YARNCOLLECTIVE.CO.UK
DANISHARTWEAVING.COM
DESIGNERSGUILD.COM
DEDAR.COM



TEXTILE UPHOLSTERY SELECTION & FURNITURE

Use table to determine the upholstery options available for fabric-covered items.

- TESTED AND APPROVED.
- NOT TESTED, BUT PRE-APPROVED BY SUPPLIER

	AFTERROOM	BRASILIA	CAIRN	CO CHAIR	EAVE COLLECTION	EAVE SEAMLINE	HARBOUR CHAIR	HARBOUR LOUNGE CHAIR	INGEBORG	KNITTING CHAIR	MERKUR	MINGLE	MY OWN CHAIR	OFFSET	PASSAGE	READY	TEAROOM CHAIR	TEAROOM SOFA	THE TIRED MAN	VILHELM	THE PENGUIN	ELIZABETH	ODA	PAGODE	RADIOHUS	THE SEAL
PRICE CATEGORY 1																										
BARNUM BOUCLÉ, AUDDO	●	●	●	●	●	●	●	○	○	○	●	○	○	●	○	●	●	●	●	○	○	○		○	○	○
ILLUSION, NEVOTEX	○	○	○	○	○	○	○		○	●	○	○	○	○	○	○	○	○	○	○	○	○			○	○
LOGAN, YARN COLLECTIVE	●	●	●	●	●	●	●	●	●	●	●	●	●	●	●	●	●	●	●	●	●	●	●	●	●	●
MAPLE, KVADRAT	●	●	●	●	●	●	●		○	●	○	○	○	●	○	○	●	●	○	○						
REMIX, KVADRAT	●	●	●	●	●	●	●	●	○	●	○	○	●	●	○	●	●	●	○	○	●	●		●	●	●
RE-WOOL, KVADRAT	●	○	●	●	●	●	●	●	○	○	○	○	○	●	○	●	●	○	○	○	●	●		●	●	●
PRICE CATEGORY 2																										
CANVAS 2, KVADRAT	●	●	●	●	●	●	●	●	○	●	○	○	○	●	○	●	●	●	○	○	○	○		○	○	○
CLAY, SAHCO, KVADRAT	●	●	○	●	●	●	●	○	○	○	○	○	○	●	○	○	●	●	○	○	○	○		○	○	○
FIORD, KVADRAT	●	●	●	●	●	●	●	●	●	●	○	○	●	●	○	●	●	●	○	●	●	●		●	●	●
HALLINGDAL 65, KVADRAT	●	●	●	●	●	●	●	●	●	●	●	●	●	●	○	●	●	●	●	●	●	●	●	●	●	●
KEIGA, KVADRAT	●	●	●	●	●	●	●	●	●	●	●	●		●	●	●	●	●	●	●		●	●	●	●	●
MOSS, SAHCO, KVADRAT	●	●	●	●	●	●	●	●	○	●	○	○	○	●	○	●	●	●	●	●	●	●	○	○	○	○
STEELCUT TRIO 3, KVADRAT	●	○	●	●	●	●	●	●	○	●	○	○	○	●	○	○	●	●	○	●	●	●		○	○	●
PRICE CATEGORY 3																										
BARU, SAHCO, KVADRAT	●	●	●	●	●	●	●	●	●	●	●	●	●	●	●	●	●	●	●	●	●	●	●	●	●	●
SAFIRE, SAHCO, KVADRAT	●	●	●	●	●	●	●	●	○	●	○	○	●	●	○	○	●	●	○	○	●	○	○	●	●	○
SERPENTINE, KVADRAT	●	●	●	●	●	●	●	●	●	●	●	●	●	●	●	●	●	●	●	●	●	●	●	●	●	●
VIDAR 4, KVADRAT	●	●	●	●	●	●	●	●	●	○	○	●	●	●	○	○	●	●	○	●	●	○	○	○	○	○
PRICE CATEGORY 4																										
GRAND MOHAIR, DANISH ART WEAVING	○	○	●	●			○	●	●	○	○	●	○		○	○	○	●	○	●	○	○		○	○	○
LUPO, DEDAR	●	○	○	●	●	●	●	○	○	○	○	○	○	●	○	○	●	○	○	○	○	○	○	○	○	○

Textile Category 1

BARNUM BOUCLE
by Audo



Woven from a cotton-wool blend, Barnum Bouclé is crafted with twisted, looped yarns for a durable, nubby surface finish that enhances the softness and comfort of the fabric.

Available in a range of beautiful muted colours.

PRICE CATEGORY
1

MANUFACTURER
Audo

MATERIALS
45% Cotton
19% Viscose
15% Wool
13% PC
8% Polyester

DURABILITY
60.000 Martindale

LIGHTFASTNESS
5 (ISO 1-8)

PILLING
4 (ISO 1-5)

C&M (BS5852-0/1)
Yes

CAL 117
Yes

CRIB 5 (BS5852-5)
No - Cannot be treated



04



05



07



10



11



13



19



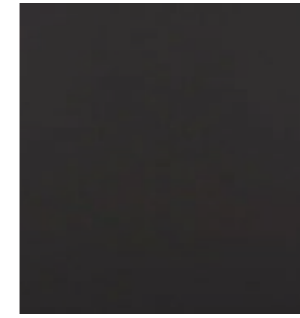
21



24

ILLUSION
by Nevotex

A synthetic leather crafted from Polyurethane (PU), Illusion is a versatile choice for a range of applications, particularly well-suited for use in hospitality settings and other high-traffic environments with elevated hygiene requirements thanks to its easy-clean surface.



00110



44388



47124



85020



85352

PRICE CATEGORY

1

MANUFACTURER

Nevotex

MATERIALS

100% Polyester

THICKNESS

1 mm

DURABILITY

500.000 Martindale

LIGHTFASTNESS

>7 (ISO 1-8)

PILLING

4-5 (ISO 1-5)

C&M (BS5852-0/1)

Yes

CAL 117

Yes

CRIB 5 (BS5852-5)

Yes

LOGAN
by Yarn Collective



3290



3269



3281

PRICE CATEGORY
1

MATERIALS
66% Recycled Cotton
15% Wool
15% Acrylic
4% Polyester

MARTINDALE
45.000

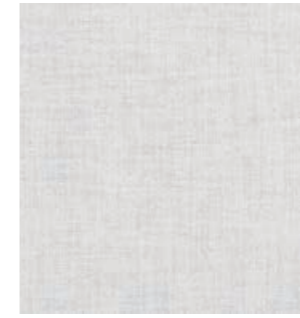
LIGHTFASTNESS
4-5

PILLING
5

MAPLE
by Kvadrat



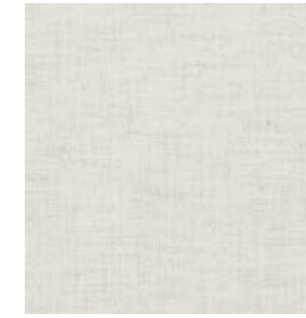
Crafted with aero finishing for an exceptionally soft feel, Maple features three tonal chenille yarns and a plush pile that reveals the intricacies of its weave and a casually irregular expression. Viscose lends a unique shimmer, intensifying with changes in light and perspective.



0112



0162



0222



0352



0392



0722



0742

PRICE CATEGORY
1

MANUFACTURER
Kvadrat

MATERIALS
63% Cotton
37% Linen

DURABILITY
55.000 Martindale

LIGHTFASTNESS
4-5 (ISO 1-8)

PILLING
4-5 (ISO 1-5)

C&M (BS5852-0/1)
No

CAL 117
No

CRIB 5 (BS5852-5)
No

REMIX 3
by Kvadrat



Remix embodies simplicity, elegance and minimalism from a distance, while revealing complexity, nuance and vibrancy up close. This duality is accomplished by intricately weaving two contrasting yarns, each carrying up to three distinct hues.

Its remarkable depth of colour seamlessly transitions into a uniform shade when viewed from a distance.

PRICE CATEGORY
1

MANUFACTURER
Kvadrat

MATERIALS
90% New Wool (Worsted)
10% Nylon

DURABILITY
100.000 Martindale

LIGHTFASTNESS
6 (ISO 1-8)

PILLING
4 (ISO 1-5)

C&M (BS5852-0/1)
Yes

CAL 117
Yes

CRIB 5 (BS5852-5)
No - Can be treated



0123



0133



0143



0163



0223



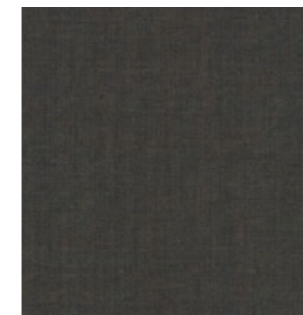
0233



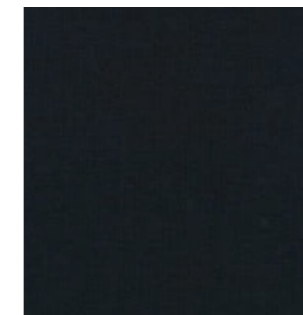
0433



0733



0852



0873



0954

RE-WOOL
by Kvadrat



Re-wool is a luxurious upholstery fabric that champions sustainability. Made with recycled wool, it features a woven stitch-like surface with a remarkable colour depth that creates a dynamic visual interplay on furniture surfaces.

PRICE CATEGORY
1

MANUFACTURER
Kvadrat

MATERIALS
45% Recycled Wool (Worsted)
45% New Wool (Worsted)
10% Nylon

DURABILITY
100.000 Martindale

LIGHTFASTNESS
6 (ISO 1-8)

PILLING
4 (ISO 1-5)

C&M (BS5852-0/1)
Yes

CAL 117
Yes

CRIB 5 (BS5852-5)
No - Can be treated



0128



0198



0218



0378



0448



0558



0718



0768

Textile Category 2

CANVAS 2
by Kvadrat



A structured and durable worsted wool upholstery fabric ideal for expansive surfaces, Canvas 2 features a subtle weave comprised of three melange yarns for colour richness and texture. While appearing as a serene, unicoloured textile from a distance, upon closer inspection it reveals six colour nuances.

PRICE CATEGORY
2

MANUFACTURER
Kvadrat

MATERIALS
90% New Wool (Worsted)
10% Nylon

DURABILITY
100.000 Martindale

LIGHTFASTNESS
5-6 (ISO 1-8)

PILLING
4 (ISO 1-5)

C&M (BS5852-0/1)
Yes

CAL 117
Yes

CRIB 5 (BS5852-5)
No - Can be treated



114



124



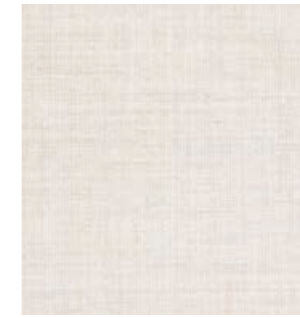
134



154



174



216



244



254



356



454



576



794



996

CLAY
by Sahco



Clay is the result of skilfully interwoven warp and weft yarns. The cotton-linen blend upholstery fabric has a uniquely textured surface that exudes casual elegance. Enhanced with a supportive backing, Clay is an excellent choice for upholstering furniture.

PRICE CATEGORY
2

MANUFACTURER
Sahco

MATERIALS
76% Linen
21% Cotton
3% Polyester

DURABILITY
45.000 Martindale

LIGHTFASTNESS
5-6 (ISO 1-8)

PILLING
4 (ISO 1-5)

C&M (BS5852-0/1)
Yes

CAL 117
No

CRIB 5 (BS5852-5)
No - Can be treated



0002



0003



0004



0005



0008



0010



0011



0012



0015



0016



0017

FIORD 2
by Kvadrat

A versatile upholstery fabric with a three-dimensional appearance, Fiord 2 cleverly merges a mélange yarn with a unicoloured yarn. Inspired by the moonlight casting a pearlescent glow on the rippling waters of a Norwegian fjord, its refined expression results in pearl-like dots that dance across the fabric's surface.

PRICE CATEGORY
2

MANUFACTURER
Kvadrat

MATERIALS
92% New Wool (Worsted)
8% Nylon

DURABILITY
60.000 Martindale

LIGHTFASTNESS
6 (ISO 1-8)

PILLING
4-5 (ISO 1-5)

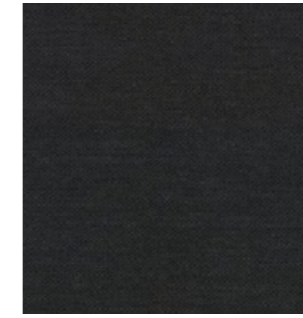
C&M (BS5852-0/1)
Yes

CAL 117
Yes

CRIB 5 (BS5852-5)
No - Can be treated



121



191



271



322



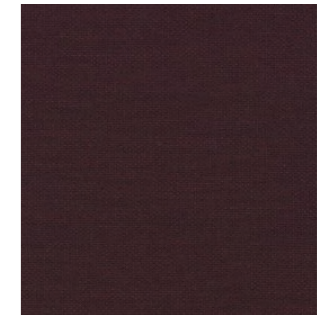
371



451



521



591



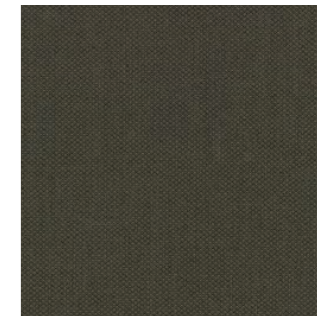
751



782



951



961

HALLINGDAL 65
by Kvadrat

Originally designed by Nanna Ditzel in 1965, Hallingdal 65 is an exceptionally durable upholstery fabric that features a harmonious blend of wool and viscose, both dyed before spinning to accentuate their texture. The wool contributes superior durability and flexibility, while the viscose enhances the colour with brilliance and depth.

PRICE CATEGORY
2

MANUFACTURER
Kvadrat

MATERIALS
70% New Wool
30% Viscose

DURABILITY
100.000 Martindale

LIGHTFASTNESS
7 (ISO 1-8)

PILLING
3-4 (ISO 1-5)

C&M (BS5852-0/1)
Yes

CAL 117
Yes

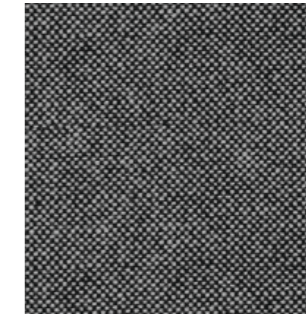
CRIB 5 (BS5852-5)
Yes



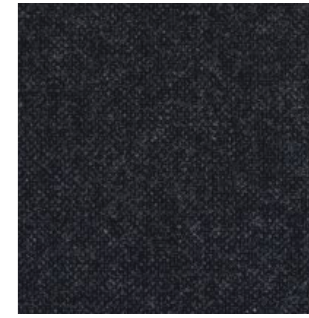
0110



0130



0166



0180



0200



0220



0224



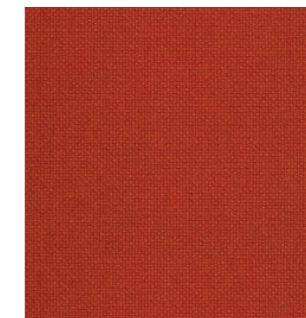
0227



0270



0350



0600



0694

KEIGA
By Kvadrat



0112



0232



0362

PRICE CATEGORY
2

MATERIALS
38% New Wool
37% Viscose
16% Linen
9% Nylon

MARTINDALE
50.000

LIGHTFASTNESS
6

PILLING
3-4

MOSS
by Sahco



Moss stands out with its textured surface, a combination of twisted yarn and chenille that not only imparts a sense of movement to the fabric, but also provides a soft handle, adding a distinctive dimension to upholstered furniture. Colour options include both one- and two-tone combinations.

PRICE CATEGORY
2

MANUFACTURER
Kvadrat

MATERIALS
52% Cotton
22% Viscose
14% Polyacrylic
6% Linen
3% Polyester
3% Nylon

DURABILITY
50.000 Martindale

LIGHTFASTNESS
5-7 (ISO 1-8)

PILLING
4-5 (ISO 1-5)

C&M (BS5852-0/1)
Yes

CAL 117
Yes

CRIB 5 (BS5852-5)
No - Can be treated



0001



0002



0004



0005



0006



0008



0010



0011



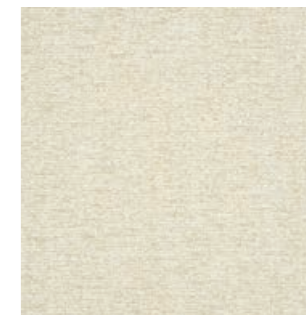
0012



0013



0016



0018



0019



0022

STEELCUT TRIO 3
by Kvadrat

A durable woollen upholstery fabric with a three-dimensional surface, Steelcut Trio 3 has an intricate weave yet maintains a simple and precise expression. Yarn-dyed and spun from three coloured threads, it has a distinctive and sophisticated pattern reminiscent of small pyramids.



205



253



383

PRICE CATEGORY
2

MANUFACTURER
Kvadrat

MATERIALS
90% New Wool (Worsted)
10% Nylon

DURABILITY
100.000 Martindale

LIGHTFASTNESS
6-7 (ISO 1-8)

PILLING
4 (ISO 1-5)

C&M (BS5852-0/1)
Yes

CAL 117
Yes

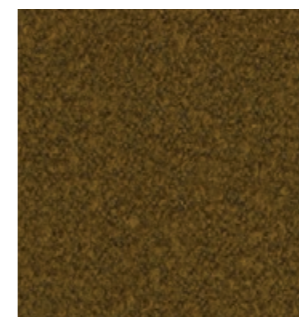
CRIB 5 (BS5852-5)
No

Textile Category 3

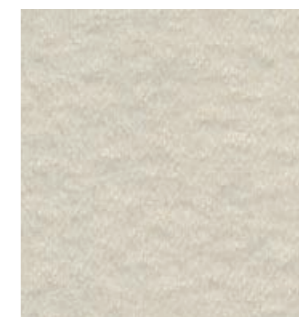
BARU
By Kvadrat



0950



0450



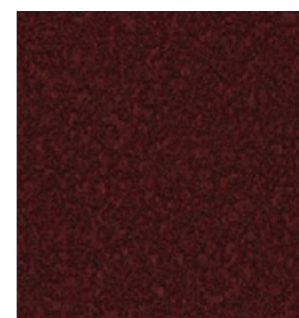
0200



0410



0330



0570

PRICE CATEGORY
3

MATERIALS
87% New Wool
10% Polyester
3% Nylon

MARTINDALE
65.000

LIGHTFASTNESS
4-5

PILLING
5

SAFIRE
by *Sahco*



Safire has a subtle handwoven appearance that is both distinctive and dynamic. Soft and textured bouclé and chenille yarns not only enhance its woolly feel and soft allure but also impart a lively two-tone effect.

PRICE CATEGORY
3

MANUFACTURER
Sahco

MATERIALS
43% Viscose
17% Polyacrylic
15% New wool
9% Cotton
8% Linen
8% Polyester

DURABILITY
40.000 Martindale

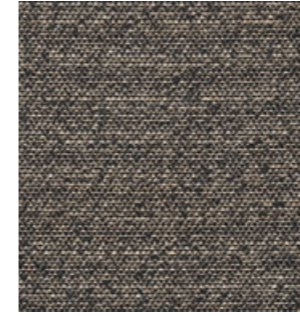
LIGHTFASTNESS
5-6 (ISO 1-8)

PILLING
3 (ISO 1-5)

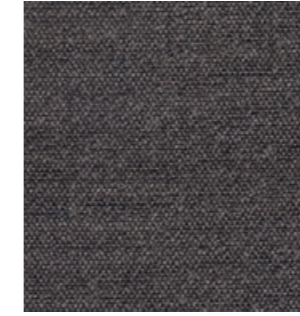
C&M (BS5852-0/1)
Yes

CAL 117
Yes

CRIB 5 (BS5852-5)
No - Cannot be treated



001



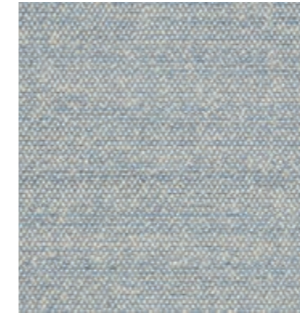
002



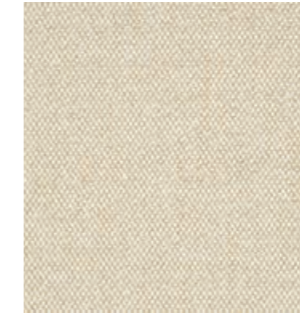
006



008

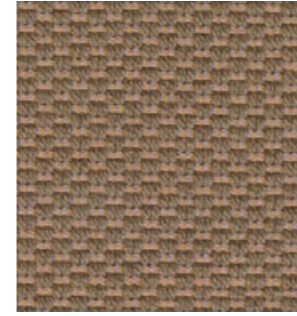
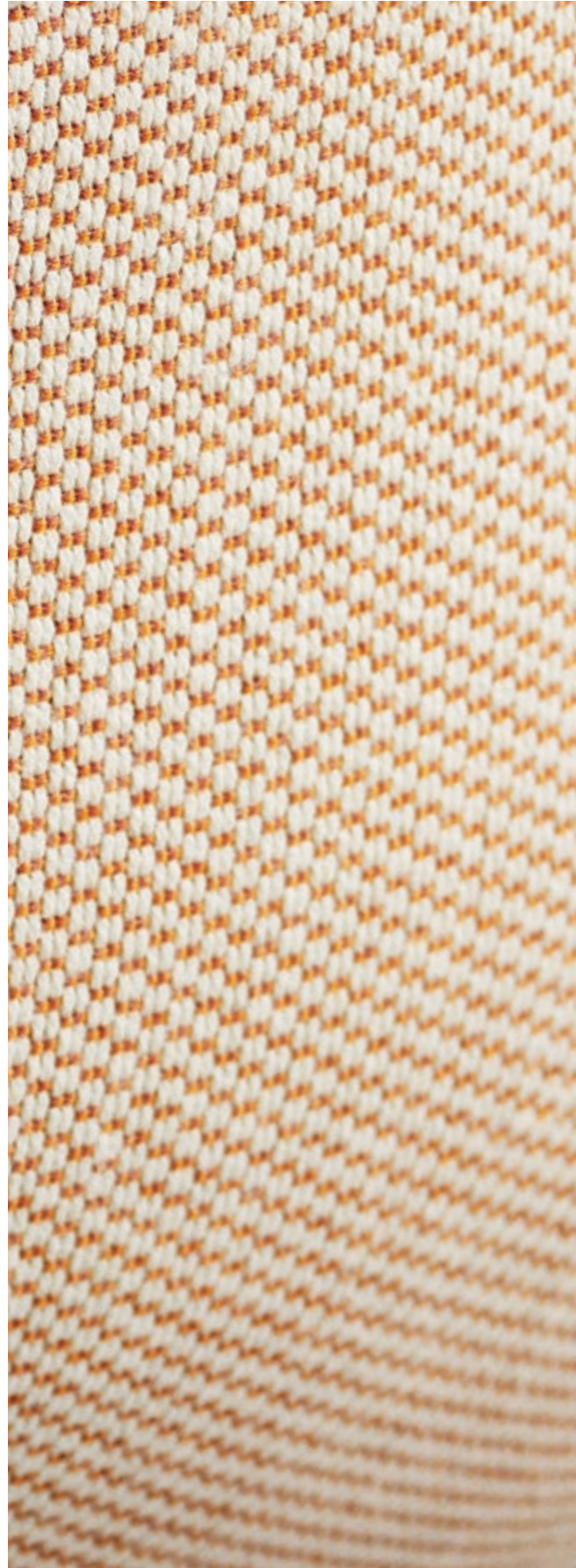


012

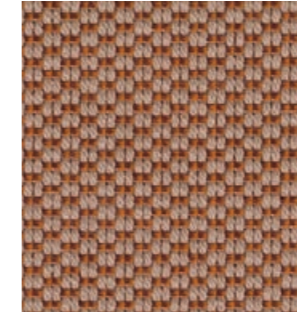


014

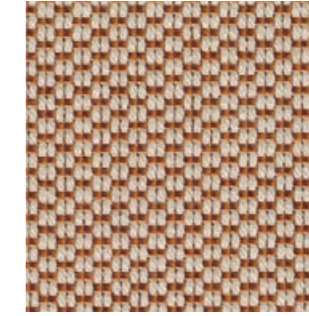
SERPENTINE
By Kvadrat



0238



0438



0428

PRICE CATEGORY
3

MATERIALS
98% New Wool
2% Nylon

MARTINDALE
45.000

LIGHTFASTNESS
5-7

PILLING
3-4

VIDAR 4
by Kvadrat



Distinguished by its tightly woven structure and nubby quality, the woollen Vidar 4 upholstery fabric has an inviting, comfortable texture that evokes images of a favourite knit. The weave's soft surface offsets the deep, shadowy tones within, lending a multifaceted richness to each colour option.

PRICE CATEGORY
3

MANUFACTURER
Kvadrat

MATERIALS
94% New Wool
6% Nylon

DURABILITY
100.000 Martindale

LIGHTFASTNESS
7 (ISO 1-8)

PILLING
4 (ISO 1-5)

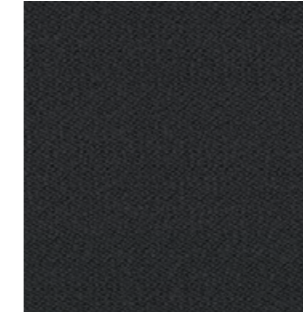
C&M (BS5852-0/1)
Yes

CAL 117
Yes

CRIB 5 (BS5852-5)
No - Cannot be treated



0146



0182



0323



0333



0526



0693



0723



0786



0956

Textile Category 4

GRAND MOHAIR
by *Danish Art Weaving*

A premium choice for upholstery, thanks to its comfort, durability and aesthetic appeal, Grand Mohair is spun from the fleece of the Angora goat, revered for its luxurious natural appeal. Exceptionally soft to the touch and resistant to wear and tear, its inherent lustre creates a sophisticated appearance.



1103



2600



8205

PRICE CATEGORY
4

MANUFACTURER
Danish Art Weaving

MATERIALS
100% Mohair

DURABILITY
200.000 Wyzenbeek

LIGHTFASTNESS
4,5 (ISO 1-8)

PILLING
5 (ISO 1-5)

C&M (BS5852-0/1)
Yes

CAL 117
Yes

CRIB 5 (BS5852-5)
Yes

LUPO
by Dedar

Characterised by its looped yarns, the flame-resistant Lupo bouclé is a dense and durable upholstery fabric with a high resistance to wear and tear. Its tactile surface adds visual interest and a soft quality to furniture, making it a comfortable choice for a range of applications.



T19028_004



T19028_005



T19028_008

PRICE CATEGORY
4

MANUFACTURER
Dedar

MATERIALS
74% Polyester Trevira CS
26% Polyester FR

DURABILITY
80.000 Martindale

LIGHTFASTNESS
4-5 (ISO 1-8)

C&M (BS5852-0/1)
Yes

CAL 117
Yes

CRIB 5 (BS5852-5)
No - Can be treated

AUDO UPHOLSTERY PROGRAMME
Leather

The Audo upholstery programme shows an overview of our textile and leather standard programme. All textile and leather collections are available in all colours.

Please note that the colour references are only intended as a guide. For further information please see manufacturer websites, or contact your local Audo sales representative.

Selection of textiles or leather outside of our upholstery programme, is subject to final testing and approval. Additional deliverytime may also occur.

SORENSENLEATHER.COM
NEVOTEX.COM
CA-MO.COM
SKANDILOCK.COM



LEATHER UPHOLSTERY SELECTION & FURNITURE

- TESTED AND APPROVED.
- NOT TESTED, BUT PRE-APPROVED BY SUPPLIER

Use table to determine the upholstery options available for fabric-covered items.

PRICE CATEGORY 0	AFTERROOM	BRASILIA	CO CHAIR	HARBOUR CHAIR	HARBOUR LOUNGE CHAIR	INGEBORG	KNITTING CHAIR	MERKUR	MINGLE	MY OWN CHAIR	PASSAGE	READY	THE TIRED MAN	VILHELM	THE PENGUIN	ELIZABETH	THE SEAL
SIERRA, CAMO	●		●	●	●			●			○	●					
PRICE CATEGORY 1																	
DAKAR, NEVOTEX	●	●	●	●	●	○	○	●		○	○	●	○	○	●	●	●
ENVY, SØRENSEN LEATHER	○	○	○			○	○	○	○	○	○	○	○	○	○	○	○
ULTRA, SØRENSEN LEATHER	●	●	●	●	●	○	○	●		○	○	●	○	○	○	○	○
ULTRA CRIB 5, SØRENSEN LEATHER	●	●	●	●	●	○	●	○		○	○	●	○	○	○	○	○
PRICE CATEGORY 2																	
DUNES, SØRENSEN LEATHER	●	●	●	●	○	○	○	●		○	○	●	○	○	●	●	●
NUANCE, SØRENSEN LEATHER	●	○	●	●	○	○	○	○		○	○	○	○	○	○	○	○
PRICE CATEGORY 3																	
SHEEPSKIN CURLY, SKANDILOCK						●			●	●			●	●			
SHEEPSKIN CURLY, NEVOTEX		●					●										

Leather Category 0

A corrected leather with a printed surface, Sierra features a uniform appearance that requires minimal maintenance. Ideal for high-traffic areas, the long-lasting material is manufactured without environmentally harmful substances like PCP and CFC. Compliant with the REACH declaration, it adheres to all standards and limits for chrome VI.

PRICE CATEGORY
0

MANUFACTURER
Camo

MATERIALS
Corrected leather

THICKNESS
0.9 – 1.1 mm

MATERIALS
100 % Corrected Leather

LIGHTFASTNESS
≥4 (ISO 1-8)

TEARING STRENGTH
≥20 N

FLEXING RESISTANCE
50.000 cycles

C&M (BS5852-0/1)
Yes

CAL 117
Yes

CRIB 5 (BS5852-5)
No



1611 STONE



0441 ARMY



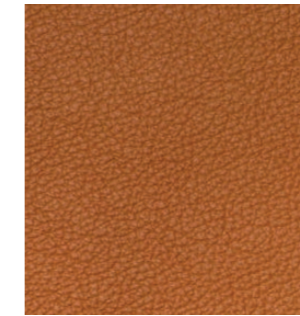
1058 OCEAN BLUE



1279 HAZE



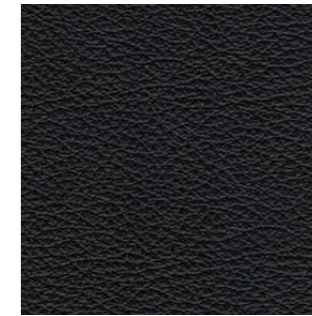
1053 TOFFEE



1513 KELATO WHISKY



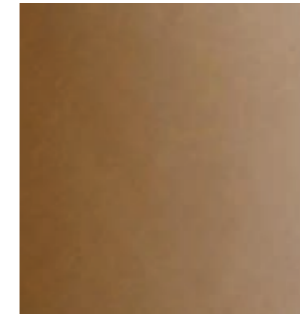
1015 DARK BROWN



1001 BLACK

Leather Category 1

This chrome- and vacuum-tanned, full-grain aniline leather has a waxed surface for an exceptionally soft touch and a glossy finish that highlights its natural texture. Becoming more comfortable over time, it provides a supportive and cosy seating experience and develops a distinctive patina that adds character and uniqueness to each piece of furniture. Leather Standard by Oeko-Tex® certified.



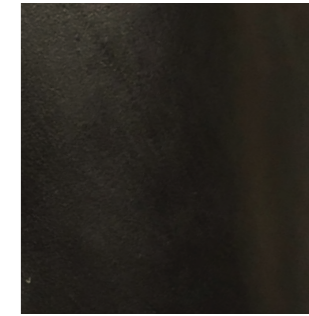
0250 COGNAC



0311 ANTILOP



0329 BROWN



0842 BLACK

PRICE CATEGORY
1

MANUFACTURER
Nevotex

MATERIALS
100 % Aniline Leather

LIGHTFASTNESS
3 (ISO 1-8)

TEARING STRENGTH
≥20 N

FLEXING RESISTANCE
30.000 cycles

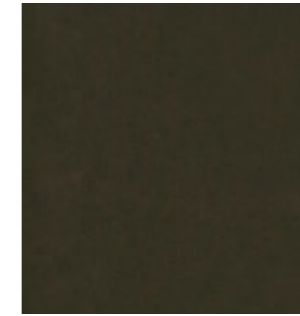
CAL 117
Yes

CRIB 5 (BS5852-5)
No

Smooth to the touch and with a subtle surface sheen, Envy is an elegant aniline leather with subtle natural markings, artfully minimised through a special sanding process. The addition of a light, transparent wax further enhances surface protection, resulting in a delightful feel and a brilliant sense of depth. Leather Standard by Oeko-Tex® certified.



NOUGAT - 20322



OLIVE - 20324

PRICE CATEGORY
1

MANUFACTURER
Sørensen Leather

MATERIALS
100 % Aniline Leather

LIGHTFASTNESS
>3 (ISO 1-8)

TEARING STRENGTH
≥20 N

FLEXING RESISTANCE
Non applicable

C&M (BS5852-0/1)
Yes

CAL 117
Yes

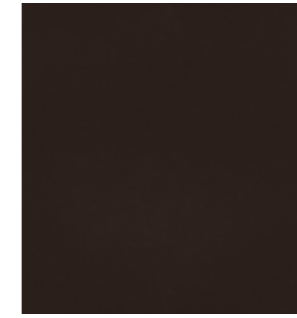
CRIB 5 (BS5852-5)
No

ULTRA
by Sørensen Leather

A versatile protected leather ideal for everyday use, Ultra has a buffed, embossed texture for a tactile feel. Its uniform grain pattern across the entire hide ensures a consistent look, and a protective finish ensures Ultra is easy to maintain and retains its original appearance for an extended period, resisting signs of aging or fading.



BLACK - 41599



CHOCOLATE - 41589



BRANDY - 41574



CAMEL - 41571

PRICE CATEGORY
1

MANUFACTURER
Sørensen Leather

THICKNESS
0.9 – 1.1 mm

MATERIALS
100% Protected Leather

LIGHTFASTNESS
>5 (ISO 1-8)

TEARING STRENGTH
≥20 N

FLEXING RESISTANCE
50.000 cycles

CAL 117
Yes

CRIB 5 (BS5852-5)
No

ULTRA CRIB 5
by Sørensen Leather

Featuring a uniform grain structure across the entire hide, Ultra Crib5 offers a uniform appearance, buffed and embossed for a tactile finish. The leather is water repellent, stain-resistant and easy to maintain thanks to its robust protective finish that extends the lifespan.

Available only in the UK, this versatile protected leather is designed to meet stringent flammability requirements, assuring reliability in high-risk environments.



41611



41612



41614



41616

PRICE CATEGORY
1

MANUFACTURER
Sørensen Leather

THICKNESS
0.9 – 1.1 mm

MATERIALS
100% Protected Leather

LIGHTFASTNESS
>5 (ISO 1-8)

TEARING STRENGTH
≥20 N

FLEXING RESISTANCE
50.000 cycles

CAL 117
Yes

CRIB 5 (BS5852-5)
Yes

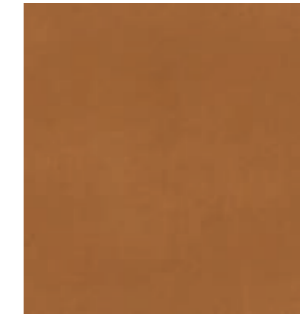
Leather Category 2

DUNES
by Sørensen Leather

An exclusive aniline leather characterised by its natural, unrefined appearance, Dunes® achieves its luxurious velvety touch through sanding and a special leather oil application. Its matte finish exudes raw elegance, accentuated by unique natural markings that lend individuality to each hide. Patinating through usage and exposure to light, Dunes becomes shinier and smoother over time.



ANTHRAZITE - 21003



COGNAC - 21000

PRICE CATEGORY
2

MANUFACTURER
Sørensen Leather

THICKNESS
1.1 – 1.3 mm

CERTIFICATE
Nordic Swan Ecolabel

MATERIALS
100% Aniline Leather

LIGHTFASTNESS
3 (ISO 1-8)

TEARING STRENGTH
≥20 N

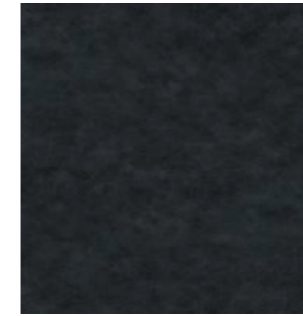
FLEXING RESISTANCE
20.000 cycles

CAL 117
Yes

CRIB 5 (BS5852-5)
No - Cannot be treated

NUANCE
by Sørensen Leather

Nuance boasts a remarkable depth and dimension that radiates authenticity while offering durability. With its sumptuous, tactile feel, the protected leather is nuanced in both texture and tone, retaining the natural patterns and imperfections inherent to each hide. An invisible coating preserves the softness and protects against wear and tear.



BURNED GREY - 40783



LIGHT GREY - 40782

PRICE CATEGORY
2

MANUFACTURER
Sørensen Leather

MATERIALS
100% Protected Leather

THICKNESS
1.1 – 1.3 mm

MATERIALS
100% Aniline Leather

LIGHTFASTNESS
>5 (ISO 1-8)

TEARING STRENGTH
≥20 N

FLEXING RESISTANCE
50.000 cycles

CAL 117
Yes

CRIB 5 (BS5852-5)
No

Leather Category 3

SHEEPSKIN
by Skandilock



PRICE CATEGORY
3

MANUFACTURER
Skandilock

MATERIALS
Sheepskin

THICKNESS
17 mm



OFF WHITE



SAHARA



MOONLIGHT



HONEY

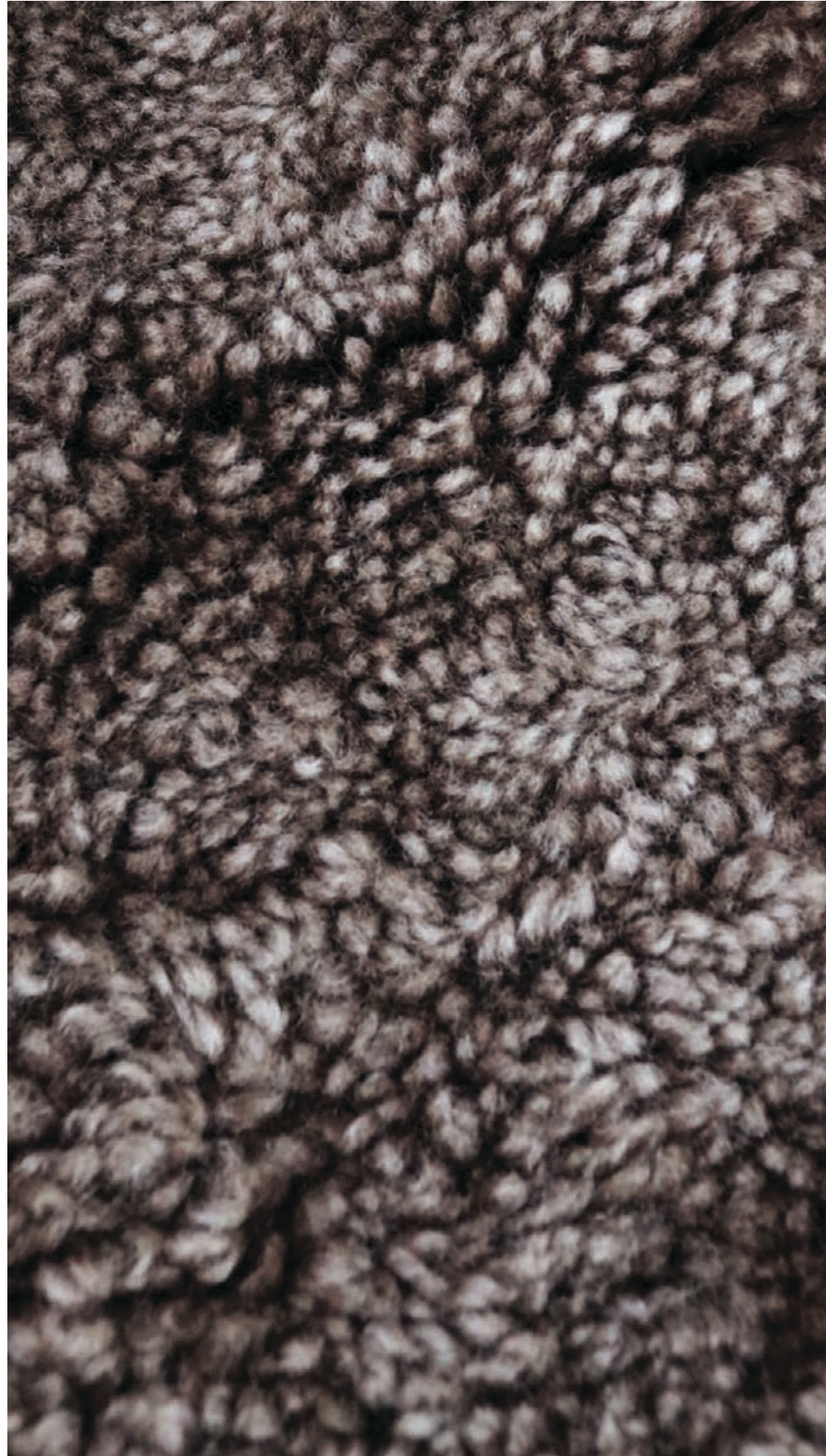


ESPRESSO



GREEN TEA

SHEEPSKIN
by Nevotex



PRICE CATEGORY
3

MANUFACTURER
Nevotex

MATERIALS
Sheepskin

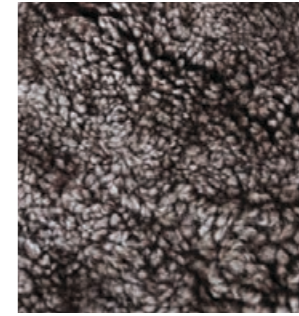
THICKNESS
17 – 21mm



NATURE



SAHARA



ROOT

NATURAL MARKINGS ON LEATHER

Individual and unique markings may appear on the leather and should not be considered as defects.



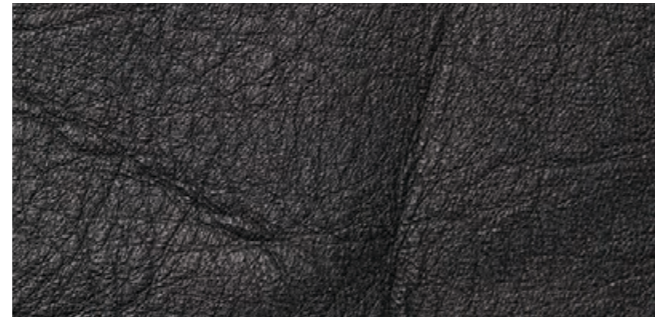
FAT WRINKLES



SCAR / INSECT BITES



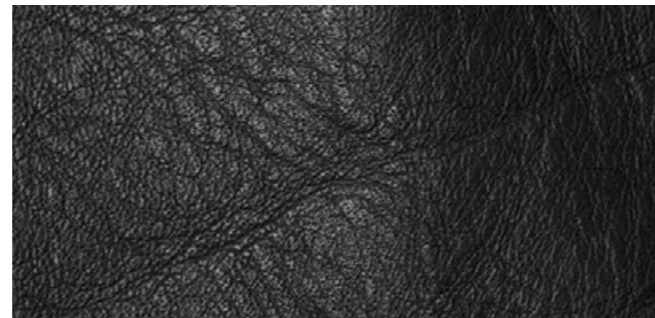
FOLDS



BUTCHING SCAR



HEALED SCARS



FAT WRINKLES

