

# FRITZ HANSEN



**PK23™**  
PRODUCT FACT SHEET

# PK23™

The PK23™ was originally conceptualised by Poul Kjærholm in 1954 but remained in the form of sketches until recently. Characterised by its wide, low-profile form tailored for relaxed conversations, the chair features vertically divided laminated veneer shells for both the seat and backrest, bridged by an elegant connector detail. The PK23 chair represents an evolutionary stage in Kjærholm's design journey, blending elements from his earlier PK4 and PK0 models while foreshadowing the structural and minimalist style that would come to define later works.

## PRODUCT TYPE

Lounge chair

## ENVIRONMENT

Indoor

## DESIGNER / YEAR OF DESIGN

Poul Kjærholm, 1954

## ABOUT THE DESIGNER

Poul Kjærholm was a trained cabinet maker and continued his studies at the Danish School of Arts and Crafts in Copenhagen. He had a particular interest in different construction materials, especially steel, which he considered a natural material with the same artistic fineness as other natural materials.

Poul Kjærholm was first employed at Fritz Hansen for about a year, where he designed a number of noteworthy chair prototypes. In 1955, Poul Kjærholm initiated his collaboration with manufacturer Ejvind Kold Christensen, which lasted until Kjærholm's death in 1980. In 1982, Fritz Hansen took over the manufacture and sales of "The Kjærholm Collection", which was developed over the period 1951 to 1967.

## MODELS

PK23

## MATERIAL

**Shell:** The shell is made of pressure moulded veneer with the option of adding front upholstery in textile. The backrest bracket is made of pressure moulded zamak with a brushed surface finish.

**Base:** The base is made of 18 mm steel tubes with 4 legs and leg ferrules of black synthetic material. The base is mounted with black support spacers.

## MATERIALS IN %

### w. Stainless steel:

- Plywood: 54%
- Stainless steel: 37%
- Steel: 1%
- Zamak: 5%
- TPE: 2%
- PA6: 1%

### w. Powder coated steel:

- Plywood: 54%
- Steel: 39%
- Zamak: 4%
- TPE: 2%
- PA6: 1%

### w. Front uph./Stainless steel

- Plywood: 51%
- Stainless steel: 35%
- Steel: 1%
- Zamak: 4%
- TPE: 1%
- PA6: 1%
- Foam: 4%
- Cardboard: 1%
- Upholstery: 2%

### w. Front uph./Powder coated steel:

- Plywood: 51%
- Steel: 36%
- Zamak: 4%
- TPE: 1%
- PA6: 1%
- Foam: 4%
- Cardboard: 1%
- Upholstery: 2%

## SURFACES

The shell is available in three variants:



COLOURED  
VENEER, ASH - BLACK

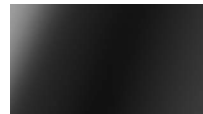


CLEAR LACQUERED  
VENEER, OAK



CLEAR LACQUERED  
VENEER, WALNUT

The base is available in two variants:



POWDER COATED  
STEEL, BLACK\*



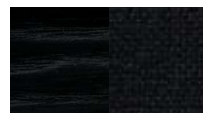
BRUSHED STAINLESS  
STEEL, BRIGHT

\* ONLY AVAILABLE WITH SHELL IN COLOURED VENEER, ASH - BLACK

PK23™ is available with front upholstery in the following selection of textiles:

- Christianshavn™
- Category 1: Canvas, Remix, Tonus
- Category 2: Divina, Divina Melange, Divina MD, Fiord, Hallingdal, Re-wool, Steelcut, Steelcut Trio, Sunniva, Vanir, Vidar

## Designer Selection:



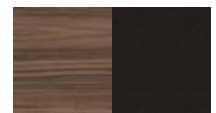
SHELL:  
COLOURED VENEER,  
ASH - BLACK

TEXTILE:  
CHRISTIANSHAVN,  
1175



SHELL:  
CLEAR LACQUERED  
VENEER, OAK

TEXTILE:  
HALLINGDAL, 220



SHELL:  
CLEAR LACQUERED  
VENEER, WALNUT

TEXTILE:  
VIDAR, 0386

**MADE-TO-ORDER**

N/A

**CERTIFICATION**

FSC™ FSC-C120451: The wood used for PK23™ is FSC-certified (FSC MIX). The FSC-certification ensures the wood is from responsible and environmentally managed forests that preserve the natural surroundings and support the local community.

For more information about environment and manufacturing processes, please download our environmental information sheet at: [fritzhansen.com](https://fritzhansen.com)

**TEST**

- EN 16139 Strength, durability and safety – Requirements for non-domestic seating – Level 1
- EN 1022 Determination of stability – Domestic furniture – Seating

**WEIGHT**

5,9 kg / 13 lb

6,3 kg / 13.9 lb (incl. front upholstery)

**COUNTRY OF ORIGIN**

Poland

**PRE-ASSEMBLED**

Yes

**PACKAGING**

The chair is shipped in a cardboard box. Inside the box, the product is wrapped in a PE bag to protect from dust, as well as vulnerable corners are protected with PE foam. All packaging material can be recycled depending on local capability.

**CLEANING AND CARE**

Find recommendations for cleaning and care at: [fritzhansen.com/maintenance](https://fritzhansen.com/maintenance)

**REPAIR, DISPOSAL AND REUSE**

In case of repair and disposal, the chair can be disassembled and replaced/disposed accordingly. Check local regulations for recycling options and whether there is potential for reuse.

**WARRANTY**

Fritz Hansen provides a five-year warranty on PK23™ against defects in materials and workmanship.

On any material, textile or leather, which is not listed in our price list on a specific product, the standard warranty is 2 years.

Additional warranty conditions can be found at: [fritzhansen.com/warranty](https://fritzhansen.com/warranty)

## DIMENSIONS

**PK23**