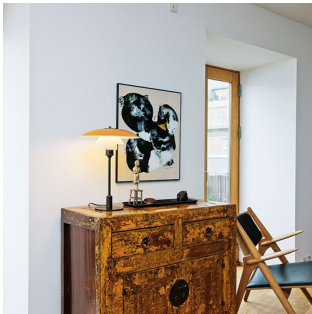


# PH 3½-2½ Table

The louvre is 100% glare-free, with a design based on the principle of a reflective three-shade system, which directs most of the light downwards. The white painted lower surface of the top shade gently directs the light downwards. The two bottom mouth-blown opal glass shades ensure a large glare-free light surface, making optimum use of the light source to provide comfortable, functional lighting. The opal glass shades are shiny on the outside and matt on the inside.



Private  
Residence,  
Copenhagen



Fredericia Furniture Showroom

## Product info

### Mounting

Cord type: Plastic with plug. Cord length: 2.5 m. Switch: On the cord.

### Finish

Red, green, yellow and white, powder coated.

### Materials

Top shade: Spun aluminium. Other shades: Mouth-blown white opal glass. Shade holder: Silk matt brown brass. Stand: Silk matt brown brass.

### Sizes and weights

Width x Height x Length (mm) | 330 x 450 x 330 Max 2.6 kg

### Class

Ingress protection IP20. Electric shock protection II w/o ground.

### Light source

1x60W E14



## Product family



PH 3½-2½ Glass Table



PH 3½-3 Glass Pendant



PH 3½-2½ Floor



PH 3½-3 Pendant

## Product variants

### Colour

- Green
- Red
- White
- Yellow

### Light source

1x60W E14

# Product description

Portable fixture.

Terse and iconic design.

The size of the three shades is adjusted for optimum performance and comfort.

Interior surfaces of glass shades sandblasted to diffuse light.

Interior surface of top shade in white to direct light downward.

Member of a family products of various sizes and type.

Available in four colours.

---

## Mounting

Portable fixture plugs into standard wall outlet.

---

## Light description

The fixture emits glare free, comfortable light.

---

## Design

Poul Henningsen

---

## Material

Top shade: spun aluminum, 1.5mm (0.06") thick, wet painted.

Lower shades: mouth blown white glass, 1.5mm (0.06") thick.

Struts and socket cover: cast copper, bronze finished.

Base: steel with bronze finished, copper cover.

Stem: extruded copper, bronze finished, 2.0mm (0.08") thick.

Switch: on/off, phenolic, on cord.

Socket: Porcelain, medium base for A-19, frosted envelope lamps.

---

## Weight

Min: 2.564 kg Max: 2.564 kg

---

## Finish

Green, Red, White, Yellow

## Spare parts & accessories

Product	Variant number
PH 3½-2½ GLASS, MIDDLE SHADE	5744162241
PH 3½-2½ GLASS, LOWER SHADE	5744162254
PH 3½ TOP SHADE, RED	5741095434
PH 3½ TOP SHADE, GREEN	5741095463
PH 3½ TOP SHADE, WHT	5741095492
PH 3½ TOP SHADE, YELLOW	5741095528
FINGER SCREW OB M3X12 (3PCS) LOWER	5744611129
FINGER SCREW OB M2X12 (3PCS) MIDDLE	5744611132