

Allstar

Konstantin Grcic, 2014



**vitra.**



# Allstar

Konstantin Grcic, 2014



The Allstar chair defies conventional categorisations: is it a chair for office workplaces or the home office? What period is it from? Does it fulfil specific functions? What is it made of? In developing Allstar, Konstantin Grcic kept such formulations open in order to create a relaxed, home-like ambience for workers in office settings. Allstar's appealing design is emblematic and familiar, inspiring a sense of dependability and trust. Its casual ease and comfort has a calming influence and de-accelerates the fast-paced dynamic of today's offices.

Allstar also discreetly conceals the necessary functional features of an office chair: a synchronised mechanism with lockable positioning, adjustability of seat height and depth, and an adjustable backrest. The stout loop frame made of robust plastic simultaneously performs the function of armrests, backrest support and extended arm of the mechanical unit. It enables the separate movement of seat and backrest and transfers the load forces to the mechanical unit under the seat. The organically shaped cushions of

the seat and back work together with the technical functions to ensure a high level of comfort. Thus Allstar is suited to a wide variety of settings where high functional performance is desired but a classic office chair would be inappropriate for aesthetic reasons – making it an ideal choice for modern workplace concepts or coworking spaces as well as home offices.



## Konstantin Grcic

Konstantin Grcic was trained as a cabinet-maker at Parnham College in Dorset before studying industrial design at the Royal College of Art in London. In 1991 he set up his own practice, Konstantin Grcic Design. The Vitra Design Museum devoted a monographic exhibition to Grcic and his work in 2014.

- 1–3 Allstar
- 4–5 Allstar materials
- 8–9 Functional features
- 10–13 V-Foam - meltable PU upholstery foam

- 14 Sustainable quality
- 15 Vitra product warranty
- 20 Upholstery fabrics & leather
- 21 Colour combinations
- 22–27 Colours and materials







#### Materials

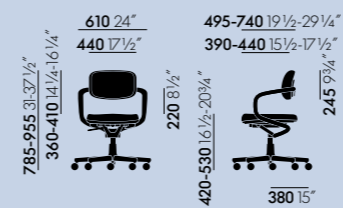
- **Office swivel chair in accordance with EN 1335-**
- **Backrest and seat:** backrest in polyamide, coated with recyclable polyurethane foam ‚V-Foam‘. Backrest height adjustable up to 5 cm using a quick release lever. Seat with contouring on the front edge, consisting

of a polyamide seat plate and recyclable polyurethane foam ‚V-Foam‘. Covers in fabric or leather, freely stretched over the surfaces of the seat and backrest.

- **Armrest/back bracket:** loop frame made of polyamide that simultaneously serves as the armrest structure, backrest support and extended arm of the mechanical unit.

- **Mechanical unit:** the synchronised mechanism can be locked in the upright position. Equipped as standard with seat height and seat depth adjustment. Plastic in the colour deep black.
- **Base:** five-star base in polyamide (deep black) with double castors (Ø 60 mm, basic dark).

All measurements are pursuant to EN 1335-1:2000









# Functional features

Despite its outward simplicity, Allstar contains all the functions necessary for an office chair according to current standards: a synchronised mechanism, seat depth and height adjustment, and an adjustable backrest that can be locked in the upright position.

- 1 Seat height
- 2 Seat depth
- 3 Locking mechanism
- 4 Backrest (upright position)
- 5 Backrest height





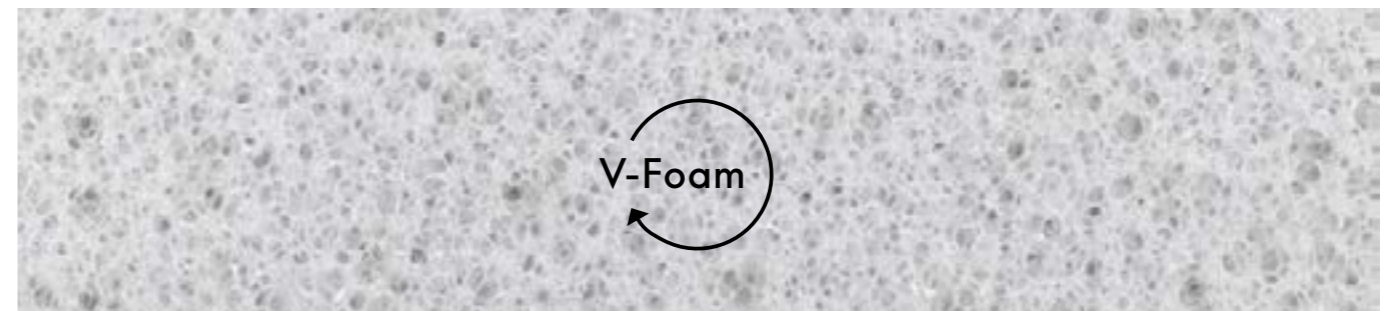






## V-Foam - meltable PU upholstery foam

**vitra.**



Developed jointly by Vitra and BASF, V-Foam is the world's first economically recyclable polyurethane foam.

Standard polyurethane foam (PU foam) is derived from fossil fuels and utilised extensively worldwide. Its recycling process is very energy-intensive and uneconomical.

V-Foam, on the other hand, can be melted, reprocessed and returned to the material cycle in its entirety for use in new products. Vitra will gradually incorporate V-Foam for all its upholstered furniture containing moulded foam from 2025.





## Vitra Test Centre

All Vitra office chairs are subjected to rigorous testing, based on the parameters of 15 years of use, at the company's own Test Centre. Vitra carries out tests that go far beyond standard requirements, with an

inspection catalogue comprised of the world's toughest tests (simulation of worst-case usage).

Over the years, Vitra has developed additional tests of its own that are not found in any official catalogue of standards.



## Greenguard Gold

The GREENGUARD GOLD label for indoor air quality (2001) recognises products that contribute to the creation of healthier indoor environments.



## GS

With the GS seal for tested safety, a state-authorized inspection institute certifies the suitability and safety of the construction and monitors production at regular intervals.



## Ergonomics Approved

The LGA certificate 'Ergonomics Approved' confirms the fulfillment of ergonomic requirements and testing criteria that exceed the minimum legal regulations for office swivel chairs.



## Bifma

Allstar fulfils the ANSI/BIFMA standard X5.1-2011, thus meeting the stringent safety requirements for the US market.

Designed and manufactured for longevity, Vitra products are backed by a quality promise guiding every aspect of their development and production. Registered products qualify for either a 10- or 30-year warranty, unlocking various benefits including product identification, origin tracing, and access to designer information and care instructions. This warranty reflects Vitra's commitment to sustainability.

Full terms and conditions and further information are available [here](#) for review. For USA & Canada, specific conditions apply.

Allstar is eligible for the 10-year Vitra Product Warranty when registered through <https://my.vitra.com> for private use.

## Spare parts

Castors and glides can be ordered directly from the vitra.com website.

[Link to online shop](#)

For other spare parts, please contact Vitra or your local Vitra partner.

[Link to service contact form](#)



## Care instructions

Here you will find care instructions for cover fabrics, leather, plastics and metals.

[Link to website](#)



## Maintenance

For matters relating to maintenance and repair or general enquiries, contact our Service Team using the following form.

[Link to Service Team contact form](#)



## Find Vitra

Here you can find the nearest Vitra location or a Vitra partner for local assistance.

[Find Vitra](#)













# Upholstery fabrics & leather

## Heavy use

Volo - F6o  
Tress - F8o  
Silk Mesh

Leather - L2o

## Medium use

Hopsak - F8o



# Colour combinations

To simplify the selection of available colour options, Vitra and Konstantin Grcic have developed a number of recommended colour combinations – so-called Beauty Versions. Based on the colour of the loop armrests, coordinated colours have been specified for the various fabric covers.

### Armrests/back bracket

12 deep black



### Seat upholstery



Hopsak 66  
nero



Leather 66  
nero

### Backrest upholstery



Hopsak 72  
yellow/poppy  
red



Hopsak 67  
poppy red/  
ivory



Hopsak 68  
pink/poppy red



Hopsak 66  
nero



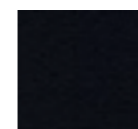
Leather 66  
nero

### Armrests/back bracket

04 white



### Seat upholstery



Hopsak 66  
nero



Leather 21  
dimgrey

### Backrest upholstery



Hopsak 66  
nero



Hopsak 72  
yellow/poppy  
red



Hopsak 88  
cognac/ivory



Hopsak 79  
warmgrey/  
ivory



Leather 21  
dimgrey



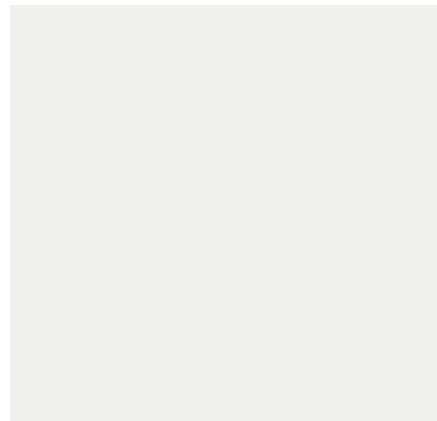
Armrests/back bracket Base (only in deep black)



## Plastic

Vitra uses a variety of high-quality plastics for its furniture products, depending on the desired characteristics. Special additives are employed in the manufacture of outdoor products to retard the fading of colours caused by UV radiation.

When it comes to plastics, it is always important to consider whether newer, more environmentally sensible alternatives are available. For this reason, four different plastics have been used in the production of the Panton Chair since 1967. The plastics most often used by Vitra are polypropylene and polymide, both of which are recyclable thermoplastics.

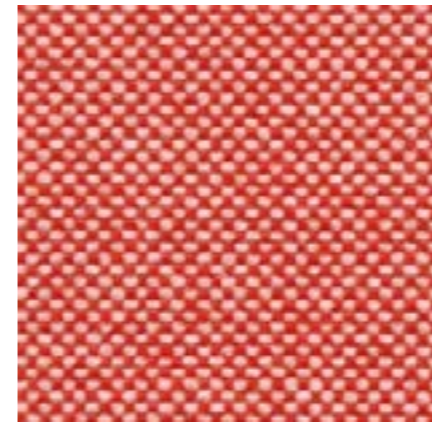


04 white



12 deep black

## Hopsak Medium use, F60



Hopsak is an expressive, flat plain-weave fabric made of polyamide. The duotone colours offer a multitude of design possibilities in high-contrast, brightly hued or subtle combinations of warp and weft threads. Highly durable and robust, Hopsak can be used in private interiors as well as public areas.

Hopsak is available in 35 colours.

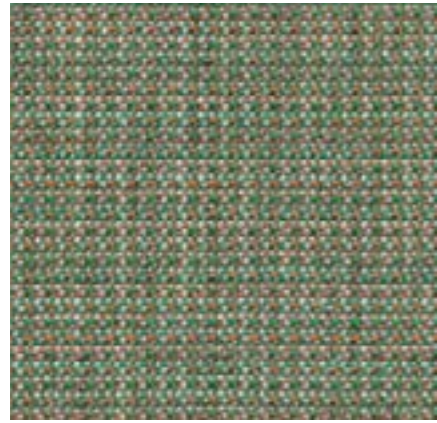
Material	100% polyamide
Weight	550 g/m <sup>2</sup> (16.2 oz/y <sup>2</sup> )
Width	127 cm +/- 2 cm (50")
Abrasion resistance	200,000 Martindale
Fastness to light	Type 6
Pilling	Grade 4-5
Fastness to rubbing	Grade 4-5 dry and wet

### Hopsak

16 yellow/ivory	85 mint/ivory	79 warm grey/ivory	67 poppy red/ivory
71 yellow/pastel green	81 ice blue/ivory	17 nude/ivory	68 pink/poppy red
69 grass green/ivory	83 blue/ivory	88 cognac/ivory	65 coral/poppy red
70 grass green/forest	84 blue/moor brown	18 mustard/ivory	63 red/poppy red
86 mint/forest	22 sea blue/dark grey	19 mustard/dark grey	96 red/cognac
20 green/ivory	73 petrol/moor brown	05 dark grey	62 red/moor brown
87 ivory/forest	75 dark blue/moor brown	24 dark grey/nero	76 marron/moor brown
80 warm grey/moor brown	77 nero/forest	66 nero	
23 nero/ivory	82 ice blue/moor brown		
	25 sea blue/ivory		
	74 dark blue/ivory		



# Tress Heavy use, F80



Tress is a flat woven fabric with a lively appearance that derives from the contrast between its even structure and the natural melange of colours. The combination of yarns with varied hues creates a harmonious and yet vibrant look. Thanks to its high wool content, Tress is a durable, easy-care material with a home-like aesthetic.

Tress is available in 22 colours.

Material	8% polyamide, 73% new wool, 19% polyester
Weight	310 g/m <sup>2</sup> (9.1 oz/y <sup>2</sup> )
Width	142 cm +/- 2 cm (56")
Abrasion resistance	40,000 Martindale
Fastness to light	Type 6
Pilling	Grade 4-5
Fastness to rubbing	Grade 4-5 dry and wet

## Tress



# Volo Heavy use, F60

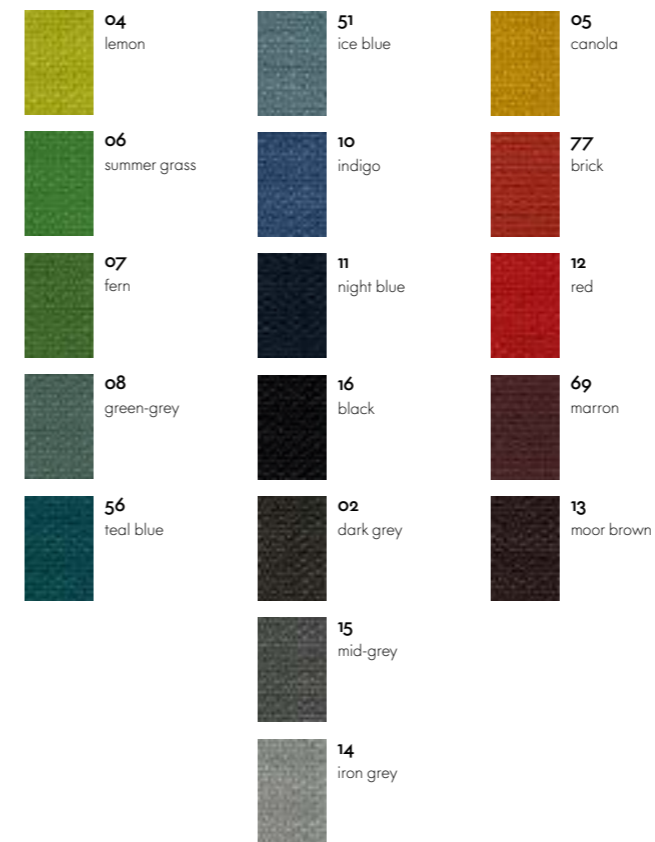


Volo is a finely structured wool blend with a refined weave that gives it an elegant appearance. This expressive textile shows strong solid colours to full advantage while simultaneously offering pleasant tactile qualities. With its soft look and appealing texture, Volo is a perfect fit for home interiors, but it is also well suited for use in the contract sector.

Volo is available in 17 colours.

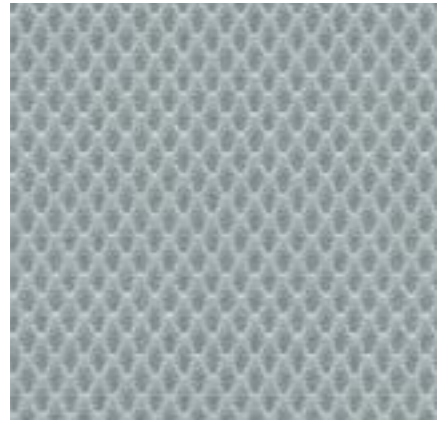
Material	15% polyamide, 85% new wool
Weight	435 g/m <sup>2</sup> (12.8 oz/y <sup>2</sup> )
Width	145 cm +/- 3 cm (57")
Abrasion resistance	100,000 Martindale
Fastness to light	Type 6
Pilling	Grade 4-5
Fastness to rubbing	Grade 4-5 dry and wet

## Volo





## Silk Mesh Heavy use

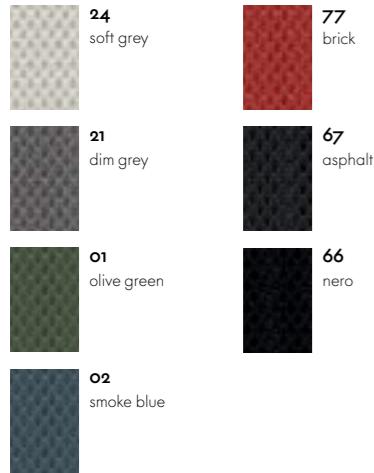


Silk Mesh is a three-dimensional spacer fabric. Thanks to the air cells in the regular honeycomb structure, the fabric not only provides a comfortable cushioning effect but also ensures a pleasant seating climate. Silk Mesh is extremely robust and well suited for use in office environments.

Silk Mesh is available in 7 colours.

Material	100% polyester
Weight	300 g/m <sup>2</sup> (8.8 oz/y <sup>2</sup> )
Width	170 cm +/- 3 cm (67")
Abrasion resistance	40,000 Martindale
Fastness to light	Type 6
Pilling	Grade 4-5
Fastness to rubbing	Grade 4-5 dry and wet

### Silk Mesh



## Leather Heavy use, L20



The standard grade leather used by Vitra is a robust cowhide leather, dyed-through, pigmented and embossed with an even grain pattern. Since it is hard-wearing and easy to maintain, it can also be used in office environments.

Leather is available in 16 colours.

Material	Robust cowhide with a distinctive, even grain
Fastness to light	Type 6
Thickness	1,1-1,3 mm
Fastness to rubbing	Grade 4 dry and wet

### Leather

