

# Cone Chair

Verner Panton, 1958



In the late 1950s, the radically new aesthetic of the Cone Chair changed the perception of what a chair could be – and marked the first expression of what would become Verner Panton’s signature design language. The Cone Chair takes the shape of an inverted funnel or cone resting on a slender four-star steel base. The rear half of the cone extends upward to form a semi-circular backrest, while the flat top supports a soft seat cushion. The

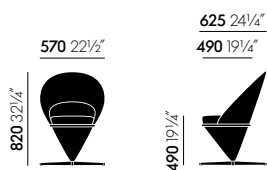
entire body is upholstered in fabric, and the comfortably padded backrest can also serve as an armrest, depending on the sitting position.

The Cone Chair is available in a variety of fabrics and a wide palette of colours, as well as in Leather Premium. This makes it easy to find the right Cone Chair for any setting.

## Materials

- **Body:** GRP (glass-fibre reinforced plastic laminate).
- **Upholstery:** lightly padded with polyurethane foam. With seat cushion, replaceable.
- **Seat height:** 480 mm (applied load 440 mm, measured in accordance with EN 1335-1).
- **Base:** cruciform base in stainless steel, satin finish (with clear plastic glides) or powder-coated (with black plastic glides).

## DIMENSIONS (in accordance with EN 1335-1:2000)



Cone Chair

**COLOURS AND MATERIALS**

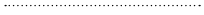


stainless steel  
brushed

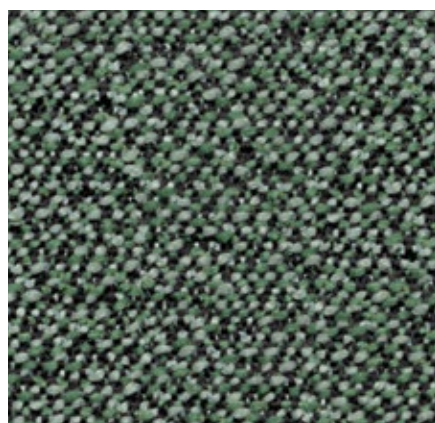


**30**  
basic dark  
powder-coated  
(smooth)

**Base**



## Cento Medium use, F120



Cento is made of 100% high-quality virgin wool. Its bouclé appearance and three-dimensional structure create a lively surface texture with a voluminous granular feel. Thanks to the sustainable purity of the wool, Cento has been granted the EU Ecolabel.

Cento is available in 14 colours.

Material	100% new wool
Weight	620 g/m <sup>2</sup> (18.3 oz/y <sup>2</sup> )
Width	147 cm +/- 2 cm (58")
Abrasion resistance	30,000 Martindale
Fastness to light	Type 5
Pilling	Grade 4-5
Fastness to rubbing	Grade 4 dry and wet



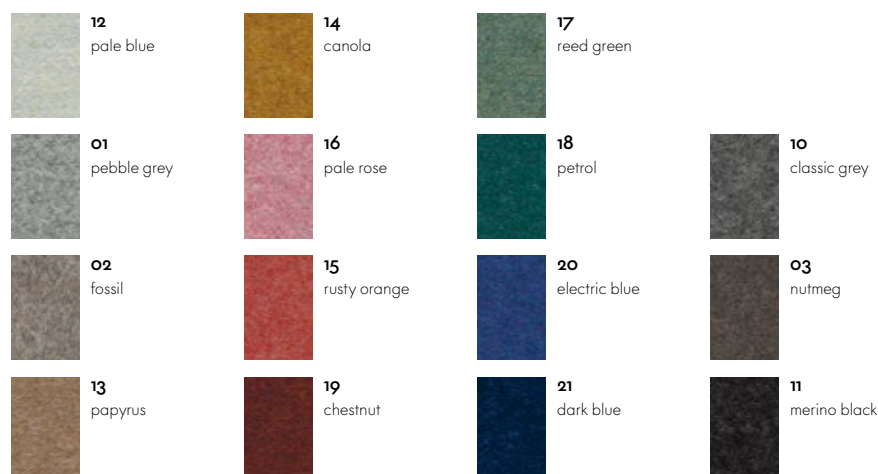
## Cosy 2 Heavy use, F80



Cosy 2 is a high-quality milled woollen cloth with a warm character. The lively melange yarn emphasises the fabric's natural colours – from delicate shades to vibrant hues – and gains added elegance with colour-coordinated stitching. The fabric offers thermal comfort and excellent durability, making it suited for upholstered furniture in office settings as well as residential applications.

Cosy 2 is available in 15 colours.

Material	20% polyamide, 80% new wool
Weight	590 g/m <sup>2</sup> (17.4 oz/y <sup>2</sup> )
Width	154 cm +/- 2 cm (61")
Abrasion resistance	50,000 Martindale
Fastness to light	Type 6
Pilling	Grade 4-5
Fastness to rubbing	Grade 4-5 dry and wet



# Tonus Medium use, F40

**vitra.**



Tonus is a classic woollen cloth in a plain weave with an appealingly soft and flexible feel. The deep intensity of Tonus colours – ranging from warm and earthy golds that evoke oriental myths and spices to cool nordic hues in the aquamarine spectrum – lend a unique richness to the fabric.

Tonus is available in 13 colours.

Material	90% new wool, 10% helanca
Weight	490 g/m <sup>2</sup> (14.5 oz/y <sup>2</sup> )
Width	140 cm (55")
Abrasion resistance	100,000 Martindale
Fastness to light	Type 5
Pilling	Grade 3
Fastness to rubbing	Grade 3-4 dry and wet



**57**  
lime green



**02**  
dark blue



**55**  
hibiscus



**58**  
grass green



**43**  
truffle



**56**  
dark magenta



**50**  
blue



**01**  
black



**03**  
red



**51**  
royal blue



**54**  
dark red



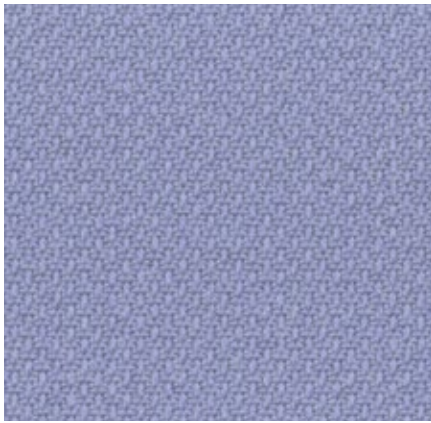
**53**  
dark orange



**52**  
dark yellow

# Volo Heavy use, F6o

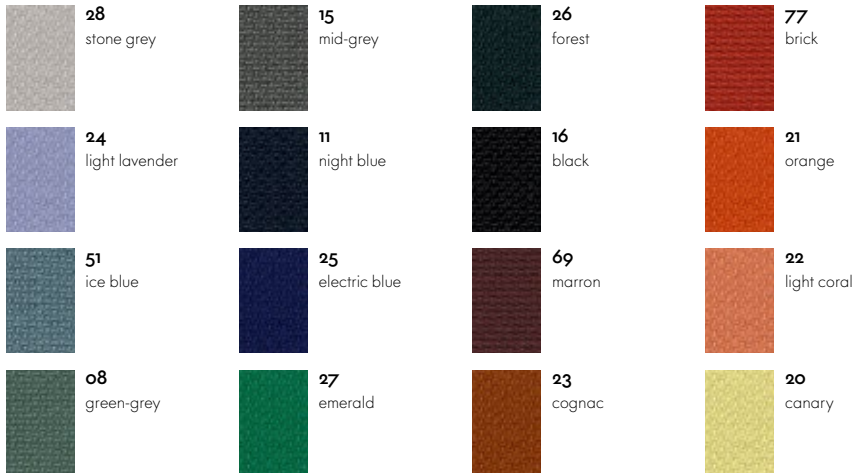
**vitra.**



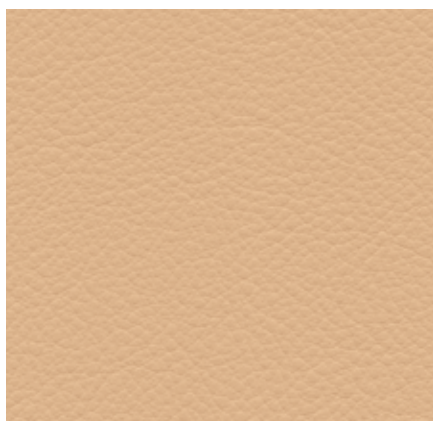
Volo is a finely structured wool blend with a refined weave that gives it an elegant appearance. This expressive textile shows strong solid colours to full advantage while simultaneously offering pleasant tactile qualities. With its soft look and appealing texture, Volo is a perfect fit for home interiors, but it is also well suited for use in the contract sector.

Volo is available in 16 colours.

Material	15% polyamide, 85% new wool
Weight	435 g/m <sup>2</sup> (12.8 oz/y <sup>2</sup> )
Width	145 cm +/- 3 cm (57")
Abrasion resistance	100,000 Martindale
Fastness to light	Type 6
Pilling	Grade 4-5
Fastness to rubbing	Grade 4-5 dry and wet



# Leather Premium F Medium use, L50



Leather Premium F is a relatively smooth cowhide leather with a flat grain and fine top sheen. It is dyed-through and lightly pigmented. Leather Premium F is processed with a tanning agent extracted from olive tree leaves (a waste product of the olive harvest), and the entire production process is carried out with the least hazardous chemicals in the smallest possible amounts.

This pleasantly soft, sustainably produced semi-aniline leather is available in a selection of 22 colours.

Material	Semi-aniline nappa leather with a very soft and supple feel, vegetable tanned
Lichtechtheit	Type 5
Dicke	1,1–1,3 mm
Reibechtheit	Grade 4 dry and wet

