

Fauteuil Direction Pivotant

Jean Prouvé, 1951



vitra.

Fauteuil Direction Pivotant

Jean Prouvé, 1951



Although it is immediately evident that Fauteuil Direction Pivotant hails from a different era, it appears in no way outdated or old-fashioned. This is due to the distinctive aesthetic of French designer, architect and engineer Jean Prouvé, who always placed an uncompromising focus on functional requirements.

The voluminous seat and backrest cushions rest on a sleek frame made of tubular steel and bent sheet metal, while the wooden armrests lend the office chair a touch of familiar comfort. The swivel seat of Fauteuil Direction Pivotant is height adjustable, and the backward tilt mechanism can be adapted to the individual user's weight.

These features are paired with the generous upholstery to ensure optimum comfort. Leather or fabric covers are available in many different colours, making it easy to find the ideal chair for any type of business workplace or home office.



Jean Prouvé

Jean Prouvé, who regarded himself as an engineer throughout his lifetime, was both the designer and manufacturer of his product ideas. His unique oeuvre, ranging from a letter opener to door and window fittings, from lighting and furniture to prefabricated houses and modular building systems, encompasses almost anything that is suited to industrial production and construction.

1-3	Fauteuil Direction Pivotant	13	Spare parts, maintenance
6-7	Functions, dimensions, materials	14-22	Colours and materials
12	Sustainable quality		

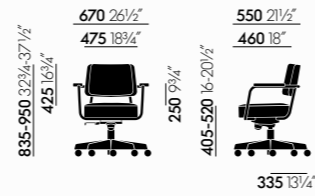




Functions, dimensions, materials

The swivel seat of Fauteuil Direction Pivotant is height-adjustable, while the backward tilt mechanism can be adapted to the user's weight and features a locking mechanism.

- 1 Seat height
- 2 Adjustable backrest resistance
- 3 Backrest locking function (upright)



Materials

- **Seat and backrest:** made of recyclable polyurethane foam ,V-Foam'; cover in fabric or leather.
- **Armrests:** solid wood in oak, natural, oiled finish; oak, dark, hard-wax oil finish, or American walnut, natural, oiled finish.
- **Base:** five-star base made of bent sheet steel and tubular steel, powder-coated (smooth). Equipped with double castors in basic dark, Ø 60 mm.
- **Seat mechanism:** adjustable backward tilt, lockable in the forward position. Continuous seat height adjustment with gas spring.
- **Origin of wood:** oak (*Quercus robur*) from Western Europe and/or Poland; American walnut (*Juglans nigra*) from the USA.
- **Delivery:** includes castor protection (orange or transparent), which must be removed before first use.
- Due to British fire safety regulations, V-Foam is not used in the UK. Fire retardants would have to be added to the formula, which would make it impossible to recycle V-Foam separately.





Sustainable quality



Vitra Test Centre

All Vitra office chairs are subjected to rigorous testing, based on the parameters of 15 years of use, at the company's own Test Centre. Vitra carries out tests that go far beyond standard requirements, with an

inspection catalogue comprised of the world's toughest tests (simulation of worst-case usage).

Over the years, Vitra has developed additional tests of its own that are not found in any official catalogue of standards.

Vitra product warranty

Designed and manufactured for longevity, Vitra products are backed by a quality promise guiding every aspect of their development and production. Registered products qualify for either a 10- or 30-year warranty, unlocking various benefits including product identification, origin tracing, and access to designer information and care instructions. This warranty reflects Vitra's commitment to sustainability.

Full terms and conditions and further information are available [here](#) for review. For USA & Canada, specific conditions apply.

The Fauteuil Direction Pivotant is eligible for the 10-year Vitra Product Warranty when registered through <https://my.vitra.com> for private use.

Spare parts, care instructions

Spare parts

Castors and glides can be ordered directly from the vitra.com website.

[Link to online shop](#)

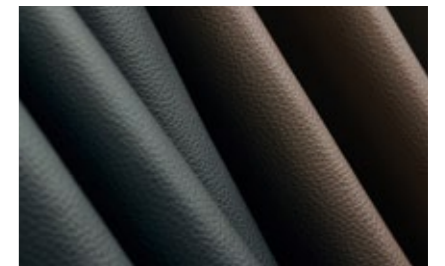
For other spare parts, please contact Vitra or your local Vitra partner.



Care instructions

Here you will find care instructions for cover fabrics, leather, plastics and metals.

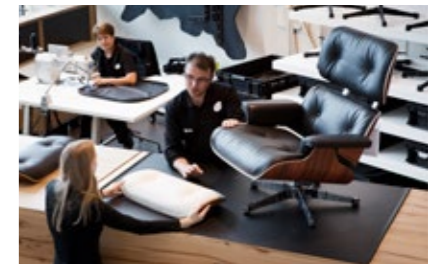
[Link to website](#)



Maintenance

For matters relating to maintenance and repair or general enquiries, contact our Service Team using the following form.

[Link to Service Team contact form](#)



Find Vitra

Here you can find the nearest Vitra location or a Vitra partner for local assistance.

[Find Vitra](#)



Base

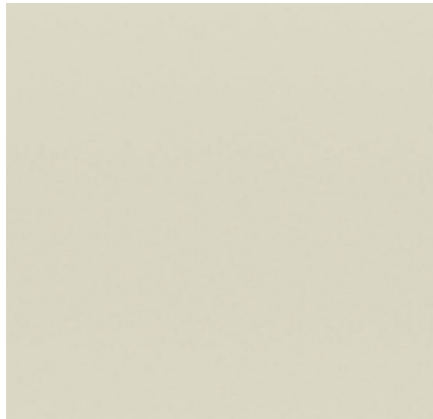


Metal

Vitra most frequently uses aluminium and steel for metal components. Since 94% less energy is required to produce recycled aluminium in comparison to primary aluminium, Vitra utilises aluminium consisting of 95% recycled material whenever possible.

Depending on the product, metal surfaces are either powder-coated, chrome-plated, polished, galvanised, lacquered or blasted. A smooth or textured powder-coated finish provides colour and surface protection.

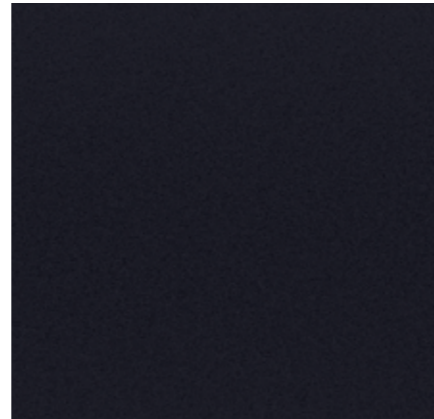
Base frame Colour group 1



88
Prouvé Blanc Colombe (Ecru) powder-coated (smooth)

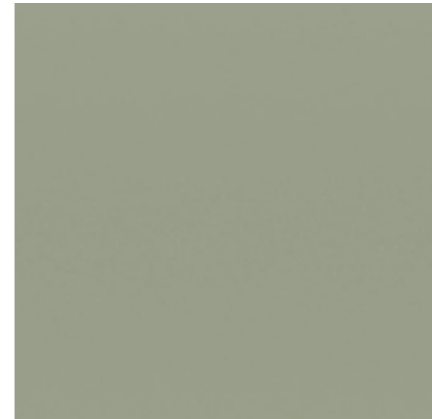


06
Japanese red powder-coated (smooth)



12
deep black powder-coated (smooth)

Base frame Colour group 2



13
Prouvé Gris Vermeer powder-coated (smooth)



18
Prouvé Blé Vert powder-coated (smooth)



41
Prouvé Bleu Marcoule powder-coated (smooth)



14
Prouvé Bleu Dynastie powder-coated (smooth)

Armrests



Solid Wood

Wood is characterised by variations in grain, texture and colour, making each wooden furnishing a unique object. Vitra has strict quality standards for the woods selected for its products and uses wood from several trees for the manufacture of a single furniture object made of solid wood. As a result, every piece has a lively and distinctive appearance.

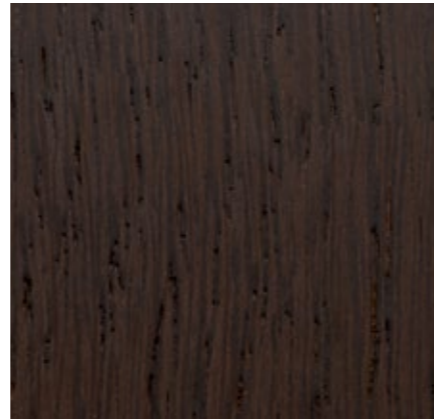
The solid woods used by Vitra are mainly sourced in Europe and have an oiled or lacquered finish, depending on their application. Exposure to light will alter the colour of wood over time.



70
oak, natural, oiled finish



75
American walnut, natural, oiled finish



04
oak, dark, hard-wax oil finish

Upholstery fabrics & leather

Heavy use

Medium use

vitra.

Tress - F80
Twill - F60
Volo - F60

Hola - F40

Leather Premium - F L50



Hola Medium use, F40

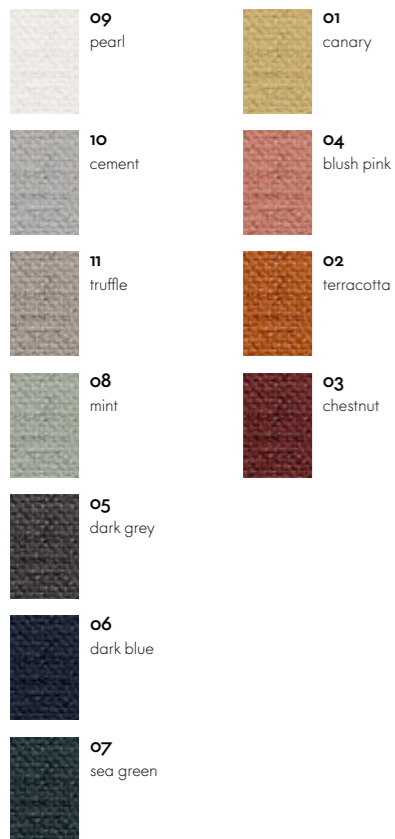


Hola is a textile made from 100% recycled polyester. Its finely textured threads are woven into a soft comfortable fabric with an understated expression and almost cotton-like feel. It is simultaneously also resilient enough to be used in semi-public spaces such as hotel lobbies. Hola is Oeko-tex-certified and manufactured using a dyeing process with a closed water cycle.

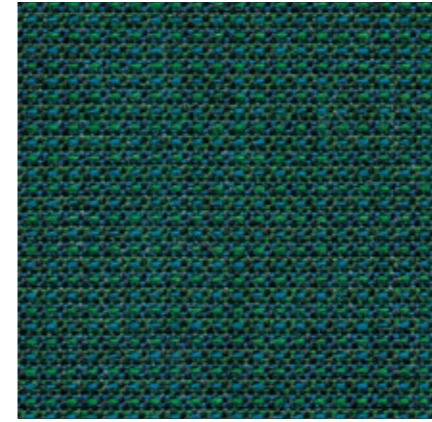
Hola is available in 11 colours.

Material	100% recycled polyester
Weight	470 g/m ² (13.9 oz/y ²)
Width	142 cm +/- 2 cm (56")
Abrasion resistance	60,000 Martindale
Fastness to light	Type 5
Pilling	Grade 4-5
Fastness to rubbing	Grade 4-5 dry and wet

Hola



Tress Heavy use, F80

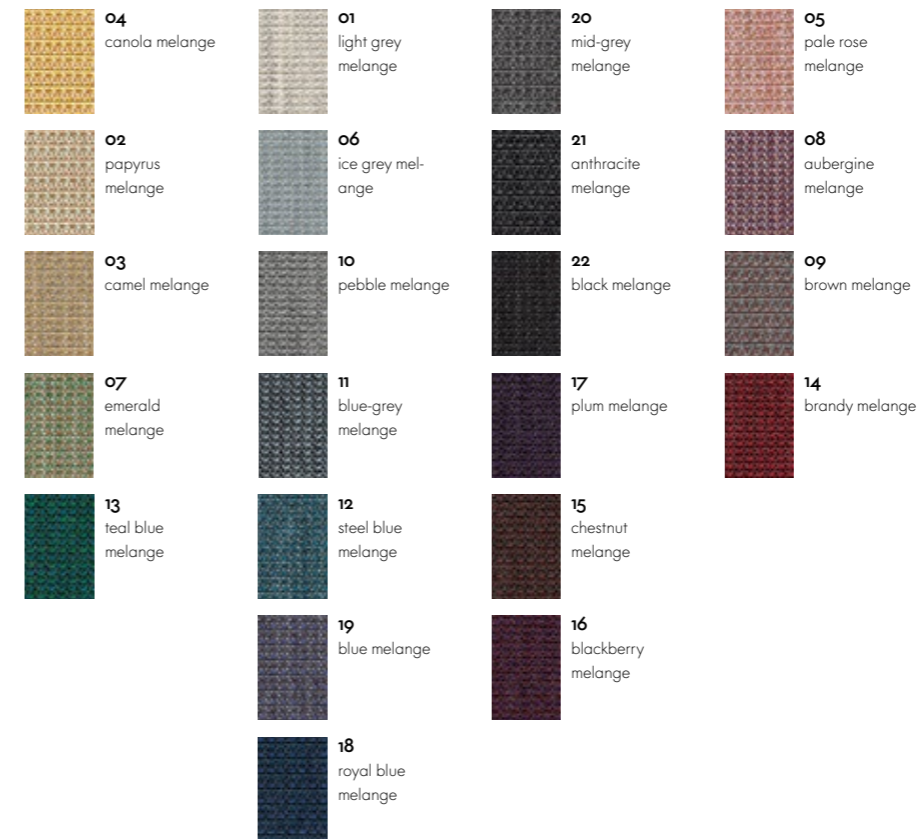


Tress is a flat woven fabric with a lively appearance that derives from the contrast between its even structure and the natural melange of colours. The combination of yarns with varied hues creates a harmonious and yet vibrant look. Thanks to its high wool content, Tress is a durable, easy-care material with a home-like aesthetic.

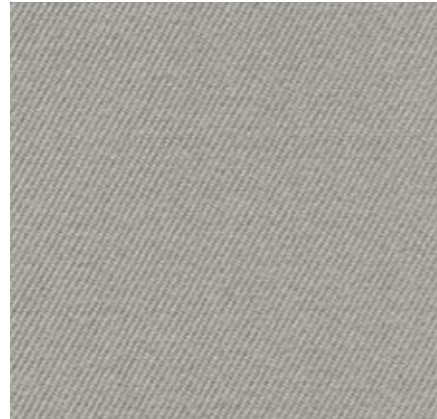
Tress is available in 22 colours.

Material	8% polyamide, 73% new wool, 19% polyester
Weight	310 g/m ² (9.1 oz/y ²)
Width	142 cm +/- 2 cm (56")
Abrasion resistance	40,000 Martindale
Fastness to light	Type 6
Pilling	Grade 4-5
Fastness to rubbing	Grade 4-5 dry and wet

Tress



Twill Heavy use, F60



The high percentage of natural fibres gives Twill very pleasant tactile qualities and an inviting appearance. Extremely durable with excellent abrasion resistance, it combines the qualities typically found in home furnishings with the demanding requirements of the project sector.

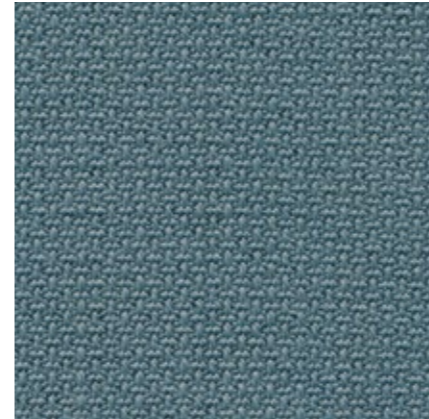
Twill is available in 18 colours.

Material	30% polyamide, 70% new wool
Weight	325 g/m ² (9.6 oz/y ²)
Width	155 cm +/- 2 cm (61")
Abrasion resistance	100,000 Martindale
Fastness to light	Type 6
Pilling	Grade 4-5
Fastness to rubbing	Grade 4-5 dry and wet

Twill



Volo Heavy use, F60



Volo is a finely structured wool blend with a refined weave that gives it an elegant appearance. This expressive textile shows strong solid colours to full advantage while simultaneously offering pleasant tactile qualities. With its soft look and appealing texture, Volo is a perfect fit for home interiors, but it is also well suited for use in the contract sector.

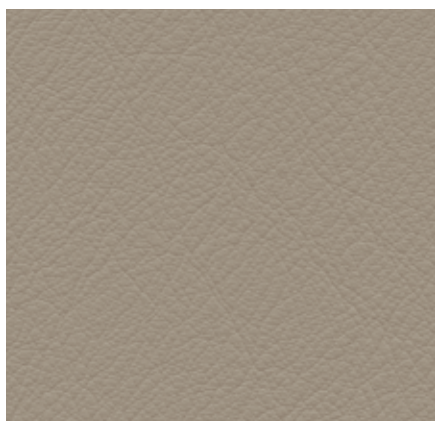
Volo is available in 16 colours.

Material	15% polyamide, 85% new wool
Weight	435 g/m ² (12.8 oz/y ²)
Width	145 cm +/- 3 cm (57")
Abrasion resistance	100,000 Martindale
Fastness to light	Type 6
Pilling	Grade 4-5
Fastness to rubbing	Grade 4-5 dry and wet

Volo



Leather Premium F Medium use, L50



Leather Premium F is a relatively smooth cowhide leather with a flat grain and fine top sheen. It is dyed-through, lightly pigmented and processed with a tanning agent extracted from olive tree leaves (a waste product of the olive harvest).

Leather Premium F is available in 22 colours.

Material	Semi-aniline nappa leather with a very soft and supple feel, vegetable tanned
Fastness to light	Type 5
Thickness	1,1–1,3 mm
Fastness to rubbing	Grade 4 dry and wet

Leather Premium F

