

Mariposa Sofa

Edward Barber & Jay Osgerby, 2014



vitra.



Mariposa Corner chaise longue right in Reed, 19 indigo



Mariposa 2 1/2-Seater and Ottoman medium in Iroko 2, 03 sand



Mariposa Sofa 3-Seater in troko 2, 01 lemon



Mariposa 2 1/2-Seater and 2-Seater in Iroko 2, 05 steel blue

Mariposa Sofa

Edward Barber & Jay Osgerby, 2014



The variously sized sofas of the Mariposa family are cosy and inviting, yet with a modern touch. They owe their extraordinary comfort to the pleasantly soft upholstery and an ingenious adjustment mechanism, which makes it possible to individually adapt the side and backrest elements for various sitting or reclining positions. The Mariposa sofas do not openly display their functional features: the slim side and back elements can be continuously and silently adjusted, from an upright position to an outward angle of approximately 30° and back again. The resistance is calibrated in such a way that these elements stay in place when the sitter leans back in a normal fashion, but will adjust to the desired angle when intentional pressure is

applied. This flexibility allows individual users to determine the position that is most comfortable for them.

Mariposa Sofa offers solutions to diverse requirements with regard to size and room layout: the Mariposa 2-Seater is an ideal choice for small, urban apartments where it offers full comfort despite its compact dimensions. It comes with a single continuous seat cushion – in contrast to the larger 2 1/2-seater and 3-seater versions of Mariposa: fitted with two seat cushions, these sofas invite users to stretch out lengthwise and use the adjustable armrests as a back or neck rest – for instance, as a relaxing place to read or take a nap. An L-shaped version, Mariposa Corner, rounds off the family.

Unlike the other models of the Mariposa family, the Mariposa Club Armchair does not have adjustable side panels and backrests. However, despite being more compact in size, it echoes the design of its larger counterparts, offering pleasantly soft upholstery and a high degree of comfort.

The range of sofas is complemented by round ottomans in two different sizes. They not only harmonise with the soft contours of the sofas, but also create even more ways to enjoy Mariposa's superb comfort.



Edward Barber & Jay Osgerby

Edward Barber and Jay Osgerby studied architecture as fellow students at the Royal College of Art in London. Since that time, their collaborative work has probed the interface between industrial design, furniture design and architecture.

1-9	Mariposa Sofa
10-13	Functional sofa, product family
14-15	Configurations
16-17	Mariposa Club Armchair

20-21	Upholstery structure
22-27	New covers, spare parts, care and cleaning
28-31	Vitra Cushions

32-46	Cover materials
47	Useful facts about cover materials

Functional sofa

The Mariposa Sofa does not openly display its functional features: the slim side and back elements can be individually adjusted – continuously and silently – from an upright position to an outward angle of approximately 30° and back again. The resistance is calibrated in such a way that these elements stay in place when the sitter leans back in a normal manner, but will adjust to the desired angle when intentional pressure is applied. This flexibility allows individual users to determine the position that is most comfortable for them.

Thanks to the unusual depth of the seat surface, two people can sit on either end and comfortably face each other – to carry on a conversation or share a cosy spot for reading. With these special features, the Mariposa Sofa offers an inviting place to prop up your feet and relax.



Mariposa 3-Seater in Iroko 2, 02 silver grey



Functional sofa: product family



Product family

- 1 Mariposa 2-Seater
- 2 Mariposa 2½-Seater
- 3 Mariposa 3-Seater
- 4 Mariposa Corner

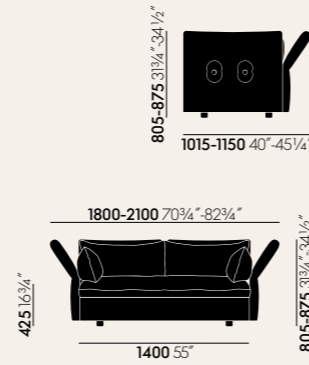
- 5 Mariposa Ottoman Ø 680 mm
- 6 Mariposa Ottoman Ø 520 mm
- 7 Mariposa Club Armchair

Materials

- **Structural frame:** webbed metal frame with polyurethane foam.
- **Seat cushions:** polyurethane and visco foams with chamber cushion overlay. Chamber cushion overlay filled with feathers and PU rods.

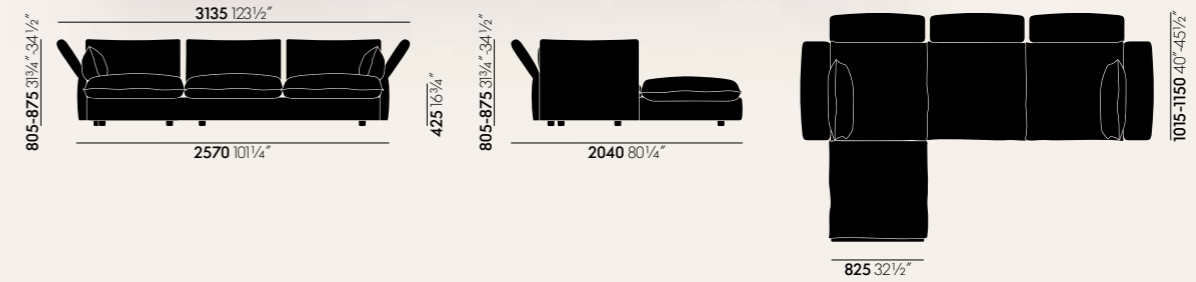
- **Back and armrest cushions:** chamber cushion filled with stripped-quill feathers and PU rods.
- **Covers:** removable.
- **Seat height:** 425 mm (280 mm with applied load, measured in accordance with EN 1335-1:2000).

- **Glides:** plastic glides with levelling adjustment.
- **Note:** cushions should be regularly shaken and plumped to retain their fullness and shape.
- **Applications:** recommended for home use only.



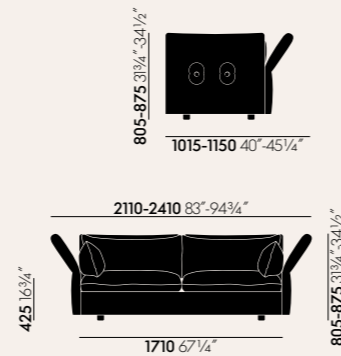
Mariposa 2-Seater

The Mariposa 2-Seater is an ideal choice for urban apartments with limited space, where it offers abundant comfort. The single seat cushion stretching along its full length gives the sofa an elegant and generous feel that belies its compact dimensions.



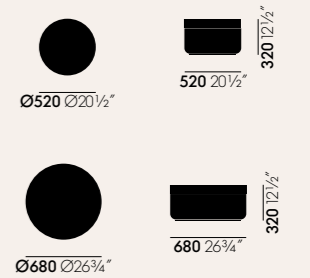
Mariposa Corner

This comfortable corner sofa provides additional seating space and is just the right configuration for many interior settings.



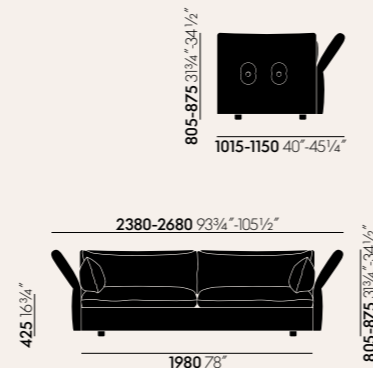
Mariposa 2½-Seater

The Mariposa 2½-Seater is the intermediate-sized model – and despite its name, this compact design offers plenty of space and excellent comfort for up to three people. The 2½-Seater is outfitted with two soft seat cushions.



Mariposa Ottoman

Matching the soft shapes of the sofa, two ottomans combine beautifully with the various sofa sizes. They feature a distinctive seam exactly aligned to the height of the cushion seams on the sofa, emphasising their place in the Mariposa family.

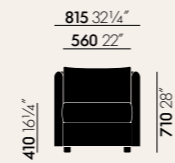
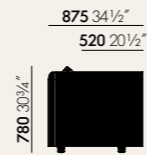


Mariposa 3-Seater

This generously proportioned 3-Seater sofa offers ample room and soft comfort, even for the whole family.

Mariposa Club Armchair

vitra.



The Mariposa Club Armchair is ideally suited for use in lounge and hospitality settings. Unlike the sofas of the Mariposa family, it does not have adjustable side panels and backrests. However, despite smaller dimensions, the armchair follows the design of its larger counterparts,

offering pleasantly soft upholstery and a high degree of comfort. The covers come in a wide selection of robust fabrics and an extensive choice of colours.

Materials

- **Structural frame:** webbed metal frame with polyurethane foam. Armchair with non-swivel base.
- **Seat cushions:** multilayer PU foam upholstery.
- **Back cushions:** foam cube and ball fibre filling; back cushions attached to backrest by zip fastener.
- **Seat height:** 410 mm (309 mm with applied load, measured in accordance with EN 1335-1:2000).
- **Covers:** removable.
- **Glides:** plastic glides with levelling adjustment.



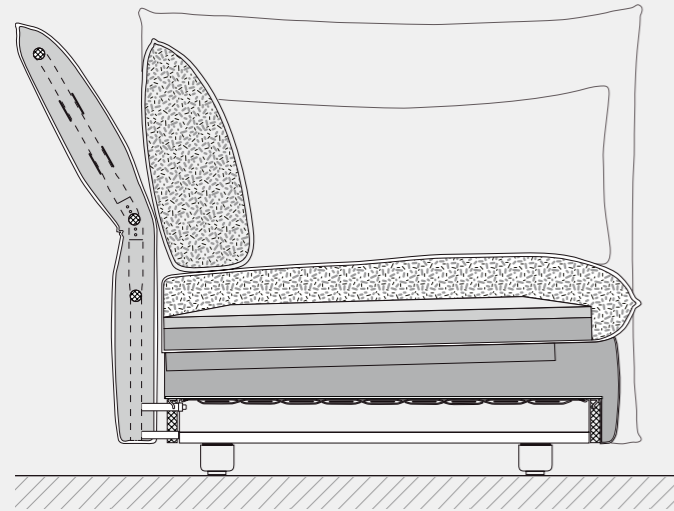
Mariposa Club Armchair in Dumet, 26 pale blue/chartreuse



Mariposa 2-Seater in Savana, 04 papyrus melange and Mariposa Ottoman large in Iroko, 15 cognac and 08 dark grey

Upholstery construction

vitra.



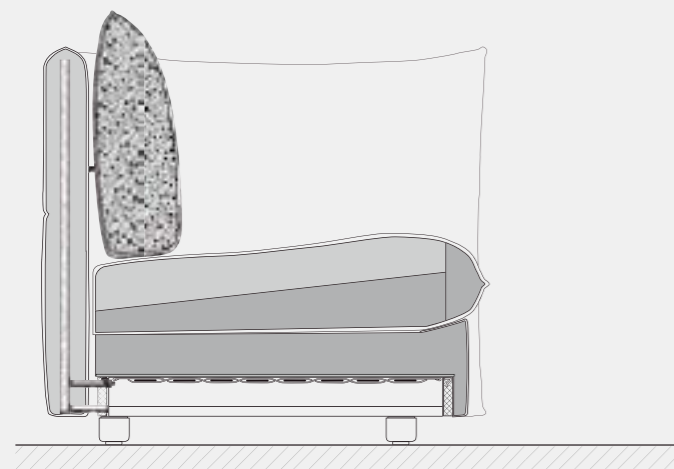
Sectional drawing of the upholstery construction

Mariposa Sofa

The padding on the webbed frame is made of foam in two different densities with varying degrees of firmness. The detachable seat cushions have a visco and polyurethane foam core surrounded by a chamber cushion filled with feathers and polyurethane rods. This upholstery technique allows users to sink in, providing comfort in both seated and reclined positions.

The individually adjustable side and back panels consist of a hinged frame with upholstery webbing, covered with polyurethane foam and fibre padding.

The loose back and armrest cushions are chamber cushions, filled with stripped-quill feathers and polyurethane rods.



Sectional drawing of the upholstery construction

Mariposa Club Armchair

The seat comprises a metal frame with a webbed suspension system and an upholstery structure of polyurethane foam. The actual seat cushion sits loosely on top and consists of polyurethane foam in varying degrees of firmness. This complex construction ensures excellent comfort.

The softly upholstered back and side panels have a wooden core, which complements their soft comfort with the necessary stability. The voluminous backrest cushion is attached to the back panel with a zip fastener. Designed as chamber cushion, it is filled with polyurethane foam cubes and polyester ball fibres.

The Mariposa Club Armchair has short legs with anti-skid, plastic levelling glides for adapting to uneven floors.

Useful facts about upholstery

Vitra has over fifty years of experience in the production of upholstered furniture. Premium materials, skilled craftsmanship and high quality standards at Vitra are a guarantee for long-lasting products. In Vitra's own test centre, our upholstered furnishings are regularly subjected to a wide range of tests that far exceed common standards.

Care instructions:

Exposure to direct sunlight should be avoided, since ultraviolet rays can cause cover materials to fade.

To retain the original fullness and shape of your sofa, cushions should be regularly shaken and plumped.

Folds and creases from sitting can be prevented in all types of upholstery by smoothing the cover material after use.



Mariposa 3-Seater in Dumet, 10 pale rose/beige

New covers, spare parts, care and cleaning

The covers are fully removable. For optimal results, we recommend using a professional service to remove and replace the covers. Covers should be taken to a specialist dry cleaning facility for treatment.

Replacement covers can be ordered if necessary. Other spare parts may also be ordered at any time to further extend the product's lifespan.

Spare parts

For new covers or other spare parts, please contact the Vitra Service team or a local Vitra dealer.

[Link to website](#)



Care instructions

Here you will find care instructions for cover fabrics, leather, plastics and metals.

[Link to website](#)



Maintenance

For matters relating to maintenance and repair or general enquiries, contact our Service Team using the following form.

[Link to Service Team contact form](#)



Find Vitra

Here you can find the nearest Vitra location or a Vitra partner for local assistance.

[Find Vitra](#)





Vitra Test Center

Vitra has its own Test Center where all sofas undergo rigorous testing to simulate 15 years of use. Vitra's inspection catalogue includes the world's toughest tests (simulation of worst-case

usage), with requirements that far exceed standard regulations. Over the years, Vitra has developed additional tests of its own that are not found in any official catalogue of standards.

Vitra Product Warranty

Designed and manufactured for longevity, Vitra products are backed by a quality promise guiding every aspect of their development and production. Registered products qualify for either a 10- or 30-year warranty, unlocking various benefits including product identification, origin tracing, and access to designer information and care instructions. This warranty reflects Vitra's commitment to sustainability.

Full terms and conditions and further information are available [here](#) for review. For USA & Canada, specific conditions apply.

The Mariposa Sofa is eligible for the 10-year Vitra Product Warranty when registered through <https://my.vitra.com> for private use.





Mariposa 3-Seater in Dumet, 23 pale pink/coral

Vitra Cushions

2024

Vitra Cushions encompass a range of cushions and bolsters in nine different sizes. The cushions provide additional comfort and create colour accents. They can be ordered in any of the available Vitra upholstery fabrics, choices of leather and colours. Further information and inspiration can be found at vitra.com/vitracushions.



Vitra Cushions, supportive comfort
Filling made of 100% recycled PET fibres
80 x 60 cm, 60 x 60 cm, 60 x 40 cm, bolster 54 x
ø16 cm



Vitra Cushions, soft comfort
Filling made of 100% recycled polyester
65 x 55 cm, 65 x 30 cm, 50 x 50 cm, 40 x 40 cm,
40 x 30 cm





Cushion 30 x 40 cm

Cushion 40 x 40 cm



Cushion 50 x 50 cm



All covers are removable and can be professionally dry cleaned.



The filling contains zero animal-based elements, such as down or feathers, and consists only of either recycled PET fibres or recycled polyester, which can be separated according to material at the end of the cushions' lifespan and are both 100% recyclable.

The cushions in the sizes 80 x 60 cm, 60 x 60 cm, 60 x 40 cm and 54 x Ø 16 cm provide supportive comfort and are filled with 100% recycled PET fibres.



The cushions measuring 40 x 40 cm, 50 x 50 cm, 65 x 55 cm, 40 x 30 cm and 65 x 30 cm offer soft comfort and are filled with 100% recycled polyester made of post-consumer waste.

Upholstery fabrics

A selection of 12 fabrics is available for the Mariposa Sofa.
The Mariposa Club Armchair is additionally available in Plano.

Details of the individual fabrics can be found on the following pages.

Heavy use:

Credo - F120
Laser RE - F40
Volo - F80
Plano - F30*

Medium use:

Corsaro - F80
Hola - F40
Dumet - F80
Iroko 2 - F80
Nubia - F100
Reed - F100
Cento - F120

Residential use:

Linho - F80
Savana - F80



*exclusively available for the Mariposa Club Armchair

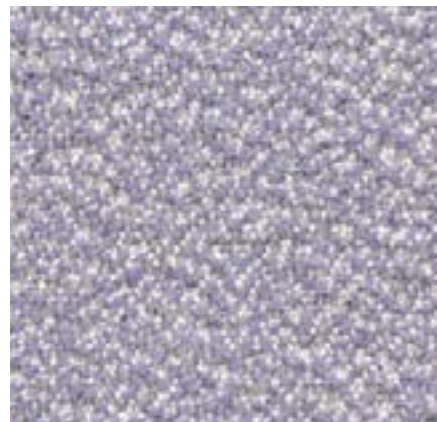


Mariposa 2 1/2-Seater and Ottoman large in Cento, o6 light lavender



Mariposa Corner chaise longue left, sitting right in Cosaro, o6 sand melange

Cento Medium use, F120



Cento is made of 100% high-quality virgin wool. Its bouclé appearance and three-dimensional structure create a lively surface texture with a voluminous granular feel. Thanks to the sustainable purity of the wool, Cento has been granted the EU Ecolabel.

Cento is available in 14 colours.

Material	100% new wool
Weight	620 g/m ² (18.3 oz/y ²)
Width	147 cm +/- 2 cm (58")
Abrasion resistance	30,000 Martindale
Fastness to light	Type 5
Pilling	Grade 4-5
Fastness to rubbing	Grade 4 dry and wet

Cento



Corsaro Medium use, F80



Corsaro is a sophisticated combination of fine and coarse yarns that give the fabric a natural look with a Mediterranean flair. The two-tone and three-tone shades interwoven with several novelty yarns add particular vibrancy to large surface areas.

Corsaro is available in 13 colours.

Material	5% polyamide, 46% polyacrylics, 5% linen, 20% wool, 14% polyester, 10% cotton
Weight	450 g/m ² (13.3 oz/y ²)
Width	140 cm +/- 2 cm (55")
Abrasion resistance	35,000 Martindale
Fastness to light	Type 5
Pilling	Grade 3-4
Fastness to rubbing	Grade 3-4 dry and wet

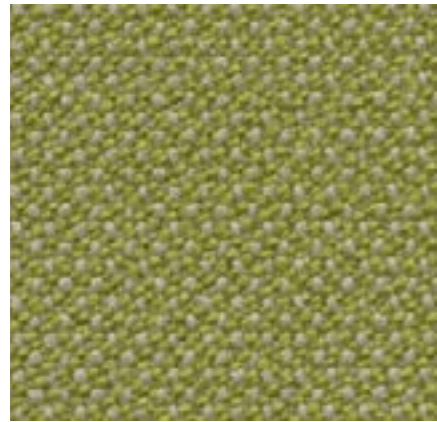
Corsaro





Mariposa 3-Seater and Ottoman medium in Credo, 14 sand/avocado

Credo Heavy use, F120



Credo is a durable woollen fabric made of premium worsted yarn with a pleasant feel. The two- and three-tone colours give this fabric a characteristic structure and vibrant appearance. Credo allows for an effective exchange of heat to ensure comfortable thermal conditions for the sitter. The fabric can also be used in office environments.

Credo is available in 22 colours.

Material	5% polyamide, 95% new wool
Weight	640 g/m ² (18.9 oz/y ²)
Width	145 cm +/- 2 cm (57")
Abrasion resistance	100,000 Martindale
Fastness to light	Type 6
Pilling	Grade 4-5
Fastness to rubbing	Grade 4-5 dry and wet

Credo



Mariposa 2 1/2-Seater in Dumet, 10 pale pink/beige

Dumet Medium use, F80

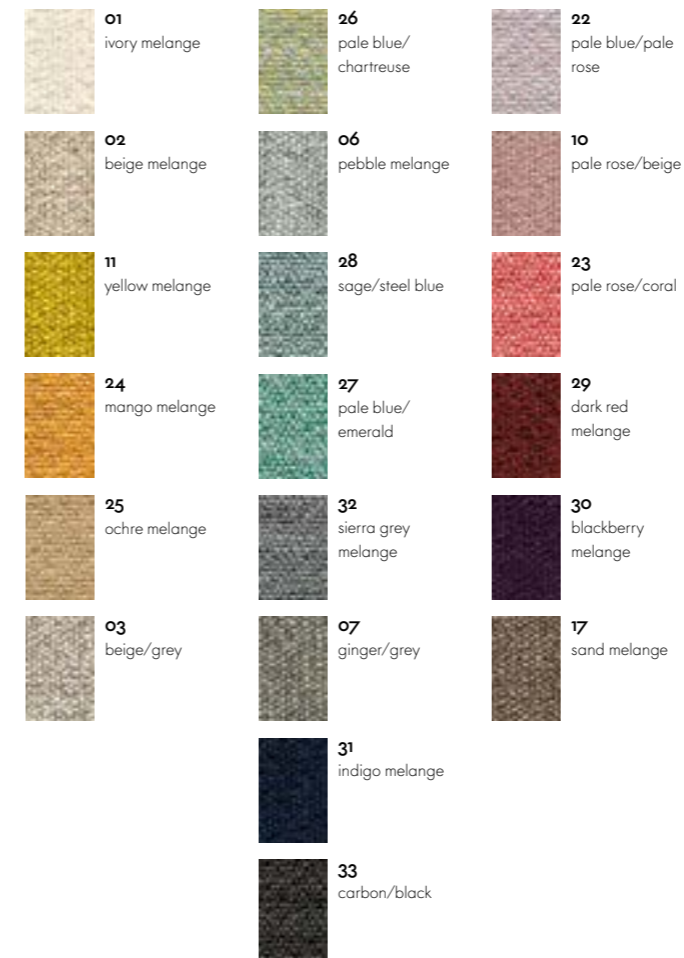


Dumet is a cotton blend in a plain weave with a lively appearance. The natural mixed tones create an elegant look with an Italian flair. Dumet is soft and cool to the touch.

Dumet is available in 20 colours.

Material	9% polyamide, 8% linen, 22% wool, 46% cotton, 15% rayon
Weight	485 g/m ² (14.3 oz/y ²)
Width	147 cm +/- 2 cm (58")
Abrasion resistance	40,000 Martindale
Fastness to light	Type 5
Pilling	Grade 3-4
Fastness to rubbing	Grade 3-4 dry and wet

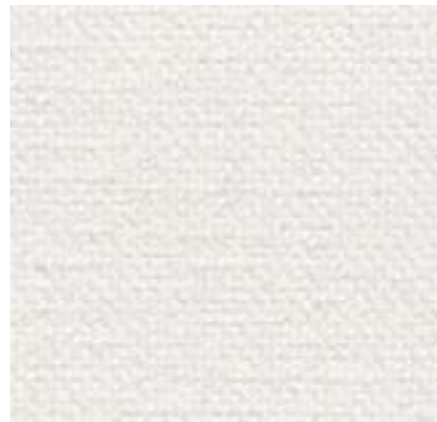
Dumet





Mariposa Corner chaise longue left, sitting right in Hola, 09 pearl

Hola Medium use, F40



Hola is a textile made from 100% recycled polyester. Its finely textured threads are woven into a soft comfortable fabric with an understated expression and almost cotton-like feel. It is simultaneously also resilient enough to be used in semi-public spaces such as hotel lobbies. Hola is Oekotex-certified and manufactured using a dyeing process with a closed water cycle.

Hola is available in 11 colours.

Material	100% recycled polyester
Weight	470 g/m ² (13.9 oz/y ²)
Width	142 cm +/- 2 cm (56")
Abrasion resistance	60,000 Martindale
Fastness to light	Type 5
Pilling	Grade 4-5
Fastness to rubbing	Grade 4-5 dry and wet

Hola



Mariposa 2 1/2-Seater in Iroko 2, 01 lemon

Iroko 2 Medium use, F80



Iroko 2 is a soft, flat woven fabric made with chenille yarn. The piles in the yarn give the weave a lively surface texture with an inviting, velvety touch. The fabric's cotton fibres provide excellent cooling properties.

Iroko 2 is available in 17 colours.

Material	48% polyacrylics, 20% polyester, 32% cotton
Weight	700 g/m ² (20.6 oz/y ²)
Width	152 cm +/- 3 cm (60")
Abrasion resistance	40,000 Martindale
Fastness to light	Type 5
Pilling	Grade 3-4
Fastness to rubbing	Grade 3-4 dry and wet

Iroko 2





Mariposa Corner chaise longue left, sitting right in Laser RE, 19 blue/moor brown

Laser RE Heavy use, F40



The environmentally friendly fabric Laser RE is made from recycled polyester. It has a distinctive woven appearance, which is particularly accentuated by contrasting duotones in a varied palette of 25 colours. Practical and easy to care for, as well as durable and highly abrasion-resistant, Laser RE is also well suited for office environments.

Laser RE is available in 25 colours.

Material	100% recycled polyester
Weight	520 g/m ² (15.3 oz/y ²)
Width	144 cm +/- 2 cm (57")
Abrasion resistance	100,000 Martindale
Fastness to light	Type 6
Pilling	Grade 4-5
Fastness to rubbing	Grade 4-5 dry and wet

Laser RE



Mariposa 3-Seater and Ottoman medium in Linho, 02 sand

Linho Residential use, F80



The high-quality linen fabric Linho is manufactured in Belgium, from the plant to the finished textile. It has the slightly irregular appearance that is typical of linen yarn. The fabric is cool and dry to the touch, with natural earthy tones that exhibit a Mediterranean flair. Due to its high percentage of linen, Linho tends to form elegant creases, lending a natural look to soft upholstered furniture.

Linho is available in 10 colours.

Material	9% polyamide, 91% linen
Weight	450 g/m ² (13.3 oz/y ²)
Width	137 cm +/- 2 cm (54")
Abrasion resistance	18,000 Martindale
Fastness to light	Type 5
Pilling	Grade 3-4
Fastness to rubbing	Grade 3 dry and wet

Linho





Mariposa Corner chaise longue right, sitting left in Nubia, 03 cream/sand

Nubia Medium use, F100



Nubia is a blended fabric with a very lively, natural appearance. Its fine sub-structure is interspersed with voluminous bouclé yarn, which gives the fabric depth and a soft, inviting touch. The varying combinations of yarns yield either contrasting or calm colour compositions with a distinctly Mediterranean flair.

Nubia is available in 11 colours.

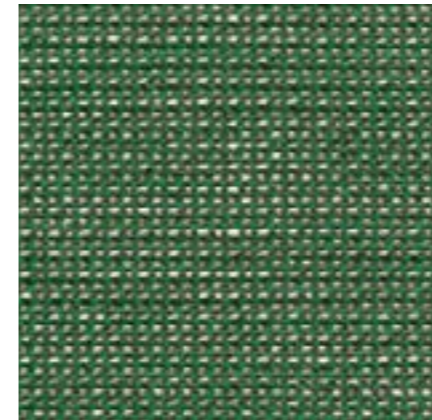
Material	2% polyamide, 30% new wool, 25% polyacrylics, 43% polyester
Weight	570 g/m ² (16.8 oz/y ²)
Width	140 cm (55")
Abrasion resistance	35,000 Martindale
Fastness to light	Type 5
Pilling	Grade 4
Fastness to rubbing	Grade 3-4 dry and wet

Nubia



Mariposa 2 1/2-Seater and Ottoman large in Reed, 13 malachite

Reed Medium use, F100

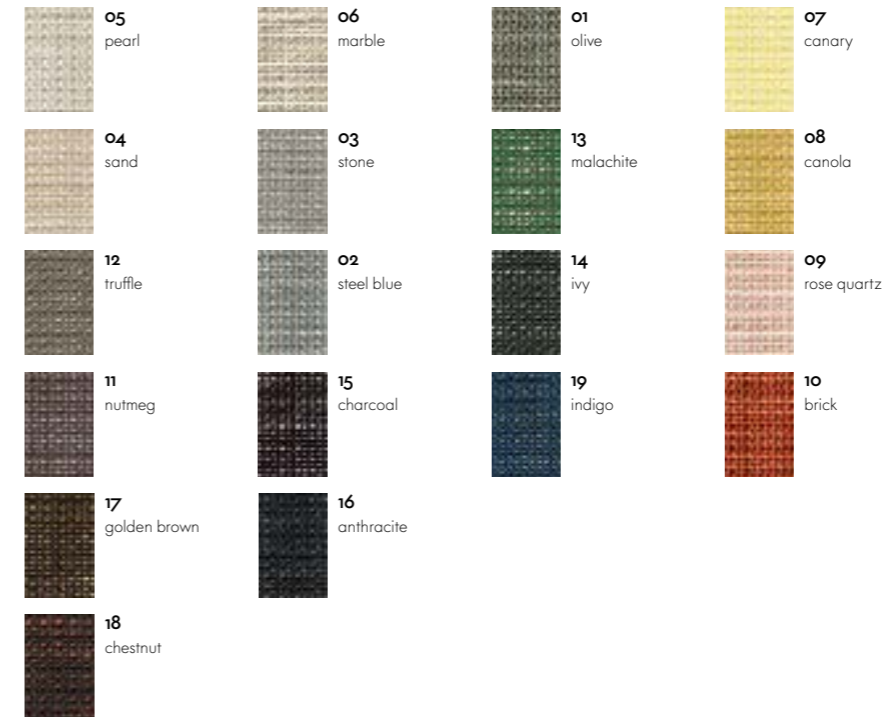


The elegant finely patterned fabric Reed is a blend of linen, wool and cotton. The structure of the fabric designed by Hella Jongerius has a hand-made look, its irregular lively linen yarn lending the fabric a natural expression. Reed is cool and soft to the touch and can be perfectly combined with other fabrics and materials.

Reed is available in 19 colours.

Material	7% polyamide, 25% new wool, 20% linen, 48% cotton
Weight	400 g/m ² (11.8 oz/y ²)
Width	142 cm +/- 2 cm (56")
Abrasion resistance	50,000 Martindale
Fastness to light	Type 5
Pilling	Grade 3-4
Fastness to rubbing	Grade 3-4 dry and wet

Reed





Mariposa 2-Seater and Ottoman medium in Savana, 04 papyrus melange

Savana Residential use, F80



Savana is a blended fabric woven from yarns of varying thickness, which give it an irregular texture with a lively and elegant appearance. A palette of subdued and natural earth tones, along with the dry, pleasant feel of the textile, emphasise the fabric's Italian flair.

Savana is available in 8 colours.

Material	8% polyamide, 50% polyacrylics, 23% linen, 19% cotton
Weight	820 g/m ² (24.2 oz/y ²)
Width	140 cm (55")
Abrasion resistance	30,000 Martindale
Fastness to light	Type 5
Pilling	Grade 3-4
Fastness to rubbing	Grade 3-4 dry and wet

Savana



Mariposa 3-Seater and Mariposa Club Armchair in Volo, 15 mid-grey

Volo Heavy use, F60



Volo is a finely structured wool blend with a refined weave that gives it an elegant appearance. This expressive textile shows strong solid colours to full advantage while simultaneously offering pleasant tactile qualities. With its soft look and appealing texture, Volo is a perfect fit for home interiors, but it is also well suited for use in the contract sector.

Volo is available in 17 colours.

Material	15% polyamide, 85% new wool
Weight	435 g/m ² (12.8 oz/y ²)
Width	145 cm +/- 3 cm (57")
Abrasion resistance	100,000 Martindale
Fastness to light	Type 6
Pilling	Grade 4-5
Fastness to rubbing	Grade 4-5 dry and wet

Volo

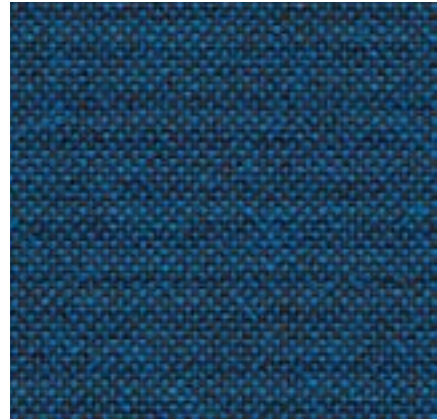




Mariposa Club Armchair in Plano, 81 blue/coconut

Plano Heavy use, F30

Exclusively for the Mariposa Club Armchair!



Plano is a robust plain weave with a flat, even texture. The wide palette of duotones with new, delicate washed-out shades includes many relatively neutral hues, a good number of which are coordinated with the Hopsak colour range. Thanks to its durability and longevity, Plano is also an ideal choice for office furnishings.

Plano is available in 39 colours.

Material	100% polyester
Weight	265 g/m ² (7.8 oz/y ²)
Width	142 cm +/- 2 cm (56")
Abrasion resistance	80,000 Martindale
Fastness to light	Type 6
Pilling	Grade 4-5
Fastness to rubbing	Grade 4-5 dry and wet

Covers have a decisive influence on the appearance and characteristics of upholstered furniture. Along with the type of material, weave and aesthetic features of the textile, a major role is played by technical properties such as resistance to abrasion, fading or stains.

Function and performance are primarily determined by the type of fabric used. In general, synthetic fibres are superior to natural fibres in terms of their technical characteristics. For this reason, blends of different materials are employed to combine the advantages of the individual fibres.

In the following, you will find some of the key features of the textiles used by Vitra in its upholstery covers:

Cotton (CO)

Skin-friendly natural fibre of plant origin, comfortable to the touch, readily absorbs moisture. Often inferior to synthetic fibres with regard to colourfastness and light resistance; flat weaves susceptible to pilling.

Linen (LI)

Natural fibre of plant origin with slight lustre, cool and comfortable, repels dirt, no pilling. Limited colourfastness to light and crocking, creases easily.

Wool (WO)

Elastic natural fibre of animal origin, naturally self-cleaning – a brief airing disperses absorbed odours, leaving the wool smelling neutral and fresh again. Good resistance to light and abrasion, highly absorbent, minimal creasing, low flammability. Subject to pilling and matting.

Polyester (PE), Polyacrylic (PA), Viscose (VI)

Synthetic, highly uniform, lightfast fibres. The non-absorbent properties of synthetics can be mitigated with fibre blends and weaving techniques.

The overall look of a piece of furniture is influenced by the colour and type of cover fabric, its properties (elastic or non-stretch) as well as the upholstery technique (removable or attached covers). Consequently, a sofa can take on a different appearance depending on the cover material. Generally speaking, cover fabrics with some elasticity are less susceptible to creases and puckering, since they have an adaptable fit on three-dimensional forms. Heavier cover materials such as Laser or Credo drape more smoothly while thinner materials exhibit a finer rippling effect.

Plano





Mariposa 3-Seater in Iroko 2, 01 lemon