



Polder

Hella Jongerius, 2005/2015

**vitra.**



Polder Sofa, fabric mix 'The Antarctic Blues'

# Polder

Hella Jongerius, 2005/2015



In the home country of Dutch designer Hella Jongerius, the word 'polder' refers to low-lying flatlands, typically subdivided into fields for agriculture, which have been reclaimed from the sea by means of dykes and drainage canals. Created with a flat surface and horizontal emphasis that evoke the characteristic features of this type of landscape, the Polder Sofa exhibits an unusual asymmetrical shape and carefully crafted combination of colours, materials and textures.

The cushions and body of the Polder Sofa are covered with different fabrics in carefully coordinated tones. The four palettes – The Sea Greens, The Pebble Greys, The Earth Reds and The Antarctic Blues – are muted, earthy shades. Thanks to these understated colour compositions, Polder is perfectly suited to any interior. To accentuate these natural hues, the eye-catching buttons – another special Polder feature – are made of natural materials with coloured pins. One light and one dark set of buttons each form a contrasting addition to the woven fabrics.

Polder exists in two sizes. A low armrest is integrated on one end of the Polder Sofa, while the other is bordered by an adjoining platform that can serve as a storage surface for magazines, books or trays. There is plenty of comfortable space to stretch out and relax. Polder Compact, by contrast, features a body with two armrests in different heights.

Both models can be optionally configured with the higher armrest on the left or right side, making it adaptable to different spatial situations. The platform for the Polder Sofa is available separately and can also be used as an ottoman. All covers are removable.



**Hella Jongerius**

The Dutch designer Hella Jongerius lives and works in Berlin. She founded the Jongeriuslab studio in 1993 and began collaborating with Vitra in 2004. Since then, she has not only contributed a substantial number of designs to the continually expanding Vitra Home Collection, but has also applied her expertise in the realm of colours and materials to the Vitra Colour & Material Library.

1-9	Polder Sofa	16-19	Upholstery construction
10	Polder Compact	20-25	New covers, spare parts, care and cleaning
11	Polder Ottoman	26-29	Vitra Cushions
12-13	Colours and materials		
14-15	Buttons		



Polder Sofa, fabric mix 'The Sea Greens'

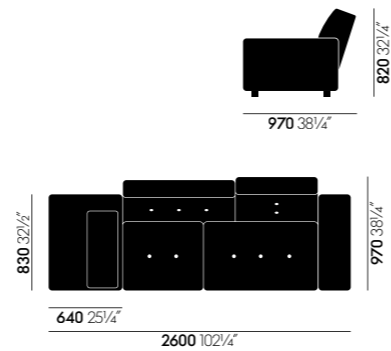
# Polder Sofa

vitra.

vitra.

## Materials

The distinctive character of the Polder Sofa by Hella Jongerius derives from the combination of diverse fabrics and colours, an asymmetrical shape and charming details. This comfortable sofa adds a stylish note to any interior.



- **Structural frame:** wooden frame.
- **Seat cushions:** polyurethane foam with interactive pocket spring core, chamber cushion structure (filled with foam cubes and lozenges) and polyester fleece.
- **Back cushions:** polyurethane foam with polyester fleece and chamber cushions (filled with foam cubes and lozenges).
- **Armrest cushion:** detached bolster, freely positionable, sand-weighted, polyurethane foam filling.
- **Cover:** coordinated combinations of various colours and fabric types, removable.
- **Buttons:** made of wood or horn, colour and grain subject to natural variations.
- **Ottoman:** wooden frame with polyurethane foam. The fabric and colour of the Ottoman matches that of the sofa.
- **Applications:** recommended for domestic use only.



Polder Sofa 'The Pebble Greys'



Polder Sofa 'The Earth Reds'



Polder Sofa 'The Sea Greens'

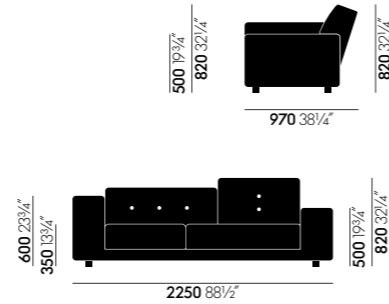


Polder Sofa 'The Antarctic Blues'

# Polder Compact

vitra.

Designed by Hella Jongerius in a range of fabrics and carefully coordinated hues and weaves, the Polder Compact sofa makes an eye-catching addition to any interior. Thanks to its condensed dimensions, it is also suited to smaller apartments.

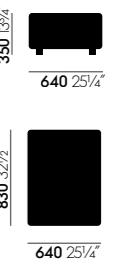


Polder Compact 'The Pebble Greys'

# Polder Ottoman

vitra.

The Ottoman is a flexible element that can be optionally used as a side platform to extend the horizontal surface of the Polder Sofa. Positioned perpendicular to the sofa, it forms a chaise longue – and as an individual object it can be placed anywhere in the room to provide a practical seat or an extra surface for small items. The Ottoman comes in four predefined colours, which are perfectly coordinated with the respective colour schemes of the sofas.



Polder Compact 'The Earth Reds', Polder Ottoman 'The Earth Reds'



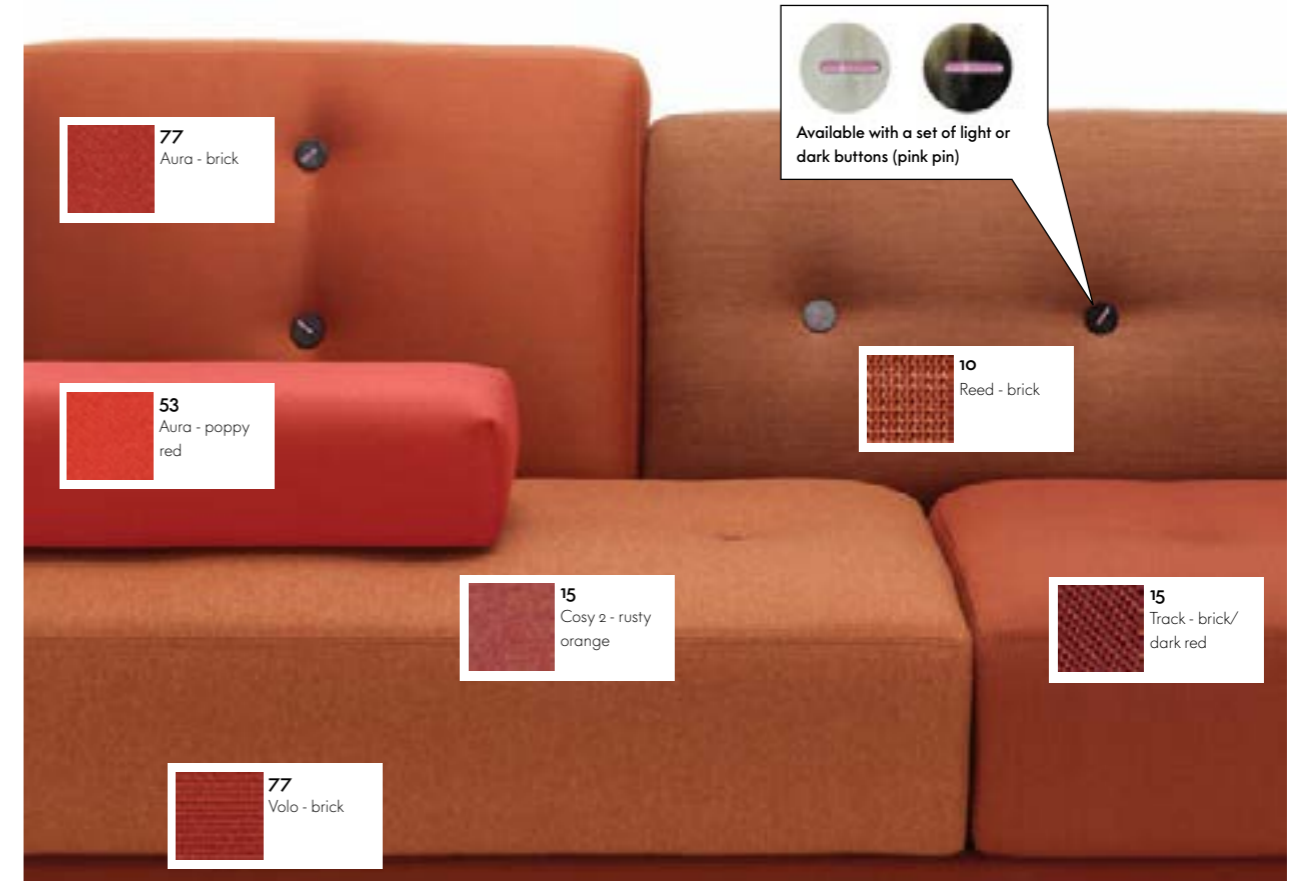
Polder Compact 'The Sea Greens'



Polder Compact 'The Antarctic Blues', Polder Ottoman 'The Antarctic Blues'



Fabric mix 'The Pebble Greys'



Fabric mix 'The Earth Reds'



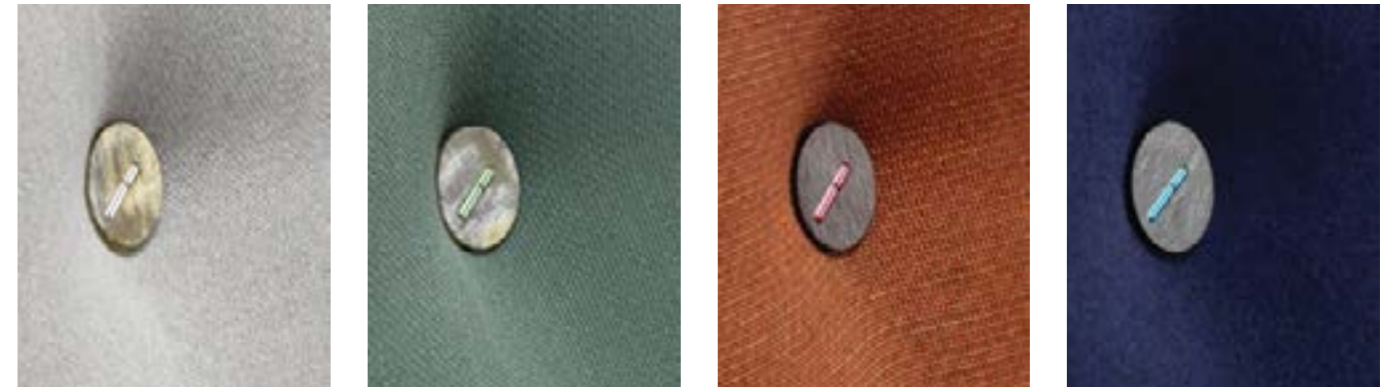
Fabric mix 'The Sea Greens'



Fabric mix 'The Antarctic Blues'

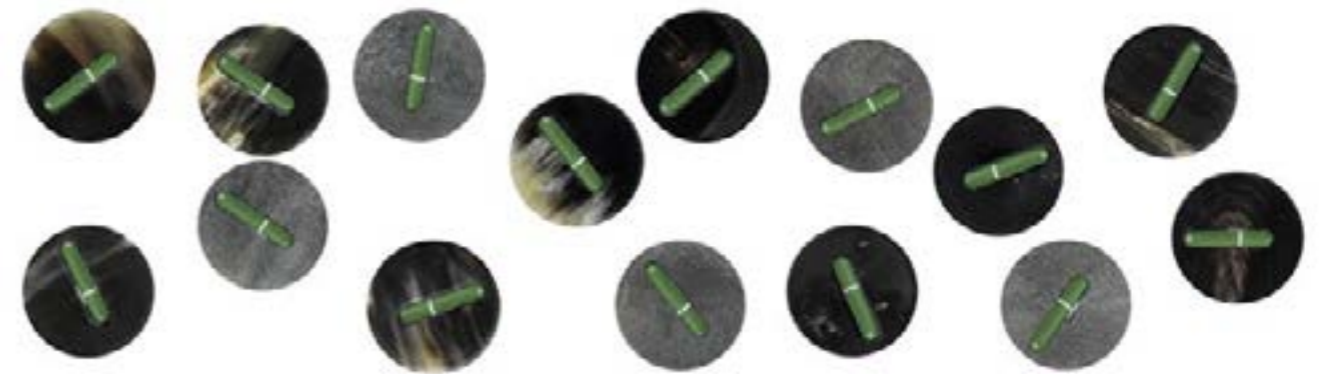
# Buttons

The buttons of the Polder sofas, designed in a collage of natural wood and horn in a variety of colours and finishes, are an especially striking detail. All covers can be fully removed despite the buttons.



Polder button sets for the colour versions 'The Pebble Greys', 'The Sea Greens', 'The Earth Reds' and 'The Antarctic Blues'

## Set of dark buttons



## Set of light buttons



**Note:** the colour of the pin depends on the selected mix of fabrics.

**Note:** the buttons are made from natural materials and each one varies slightly in colour and pattern. No two buttons are alike.





Polder Sofa, fabric mix 'The Pebble Greys'



## Useful facts about cover materials

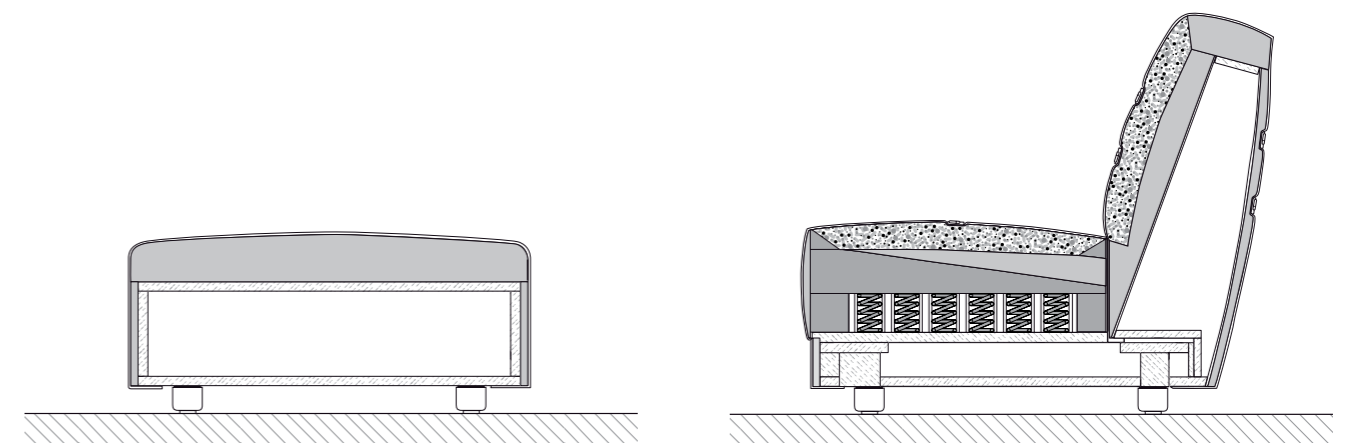
Covers have a decisive influence on the appearance and characteristics of upholstered furniture. Along with the type of material, weave and aesthetic features of the textile, a major role is played by technical properties such as resistance to abrasion, fading or stains.

Function and performance are primarily determined by the type of fabric used. In general, synthetic fibres are superior to natural fibres in terms of their technical characteristics. For this reason, blends of different materials are employed to combine the advantages of the individual fibres.

## Upholstery construction

The upholstery construction of the Polder Sofa and Polder Compact provides excellent comfort. The seat elements, which rest on the structural frame, combine layers of polyurethane foam with a chamber cushion overlay and an interactive

pocket spring core. The resilient pocket springs have a pleasant cushioning effect paired with high shape recovery. The backrest cushions consist of polyurethane foam and a chamber cushion.



## Useful facts about upholstery

Vitra has over fifty years of experience in the production of upholstered furniture. Premium materials, skilled craftsmanship and high quality standards at Vitra are a guarantee for long-lasting products. In Vitra's own test centre, our upholstered furnishings are regularly subjected to a wide range of tests that far exceed common standards.

### Care instructions:

Exposure to direct sunlight should be avoided, since ultraviolet rays can cause cover materials to fade.

To retain the original fullness and shape of your sofa, cushions should be regularly shaken and plumped.

Folds and creases from sitting can be prevented in all types of upholstery by smoothing the cover material after use.



The covers are fully removable. For optimal results, we recommend using a professional service to remove and replace the covers. Covers should be taken to a specialist dry cleaning facility for treatment.

Replacement covers can be ordered if necessary. Other spare parts may also be ordered at any time to further extend the product's lifespan.

## Spare parts

For new covers or other spare parts, please contact the Vitra Service team or a local Vitra dealer.

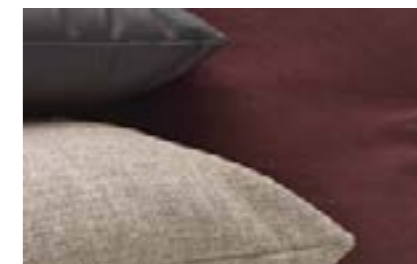
[Link to website](#)



## Care instructions

Here you will find care instructions for cover fabrics, leather, plastics and metals.

[Link to website](#)



## Maintenance

For matters relating to maintenance and repair or general enquiries, contact our Service Team using the following form.

[Link to Service Team contact form](#)



## Find Vitra

Here you can find the nearest Vitra location or a Vitra partner for local assistance.

[Find Vitra](#)





## **Vitra Test Center**

Vitra has its own Test Center where all sofas undergo rigorous testing to simulate 15 years of use. Vitra's inspection catalogue includes the world's toughest tests (simulation of worst-case

usage), with requirements that far exceed standard regulations. Over the years, Vitra has developed additional tests of its own that are not found in any official catalogue of standards.

## Vitra Product Warranty

Designed and manufactured for longevity, Vitra products are backed by a quality promise guiding every aspect of their development and production. Registered products qualify for either a 10- or 30-year warranty, unlocking various benefits including product identification, origin tracing, and access to designer information and care instructions. This warranty reflects Vitra's commitment to sustainability.

Full terms and conditions and further information are available [here](#) for review. For USA & Canada, specific conditions apply.

The Polder Sofa is eligible for the 10-year Vitra Product Warranty when registered through <https://my.vitra.com> for private use.





Polder Sofa, fabric mix 'The Pebble Greys'

# Vitra Cushions

2024

Vitra Cushions encompass a range of cushions and bolsters in nine different sizes. The cushions provide additional comfort and create colour accents. They can be ordered in any of the available Vitra upholstery fabrics, choices of leather and colours. Further information and inspiration can be found at [vitra.com/vitracushions](https://vitra.com/vitracushions).



**Vitra Cushions, supportive comfort**  
Filling made of 100% recycled PET fibres  
80 x 60 cm, 60 x 60 cm, 60 x 40 cm, bolster  
54 x ø16 cm



**Vitra Cushions, soft comfort**  
Filling made of 100% recycled polyester  
65 x 55 cm, 65 x 30 cm, 50 x 50 cm, 40 x 40 cm,  
40 x 30 cm





Cushion 30 x 40 cm



Cushion 40 x 40 cm



Cushion 50 x 50 cm



1x cushion in sizes 50 x 50 cm, 40 x 40 cm, 30 x 40 cm



All covers are removable and can be professionally dry cleaned.



The filling contains zero animal-based elements, such as down or feathers, and consists only of either recycled PET fibres or recycled polyester, which can be separated according to material at the end of the cushions' lifespan and are both 100% recyclable.

The cushions in the sizes 80 x 60 cm, 60 x 60 cm, 60 x 40 cm and 54 x Ø 16 cm provide supportive comfort and are filled with 100% recycled PET fibres.



The cushions measuring 40 x 40 cm, 50 x 50 cm, 65 x 55 cm, 40 x 30 cm and 65 x 30 cm offer soft comfort and are filled with 100% recycled polyester made of post-consumer waste.





Polder Sofa, fabric mix 'The Antarctic Blues'