

Suita

Antonio Citterio, 2010/2019



vitra.



Suita Sofa 3-Seater and Chaise Longue large with pointed cushions, in Corsaro cover fabric (05 stone melange)



Suita Sofa 3-Seater open, Ottoman and Chaise Longue small with classic cushions, in Hola cover fabric (09 pearl)



Suita Sofa 3-Seater and Daybed, tufted cushions, in Corsaro cover fabric (06 sand melange)

Suita

Antonio Citterio, 2010/2019

vitra.



The Suita sofa system combines light and slender volumes with an industrial and technological aesthetic. The geometrically precise body and cushions seem to float above the sleek, bridge-like aluminium legs, in what can be seen as a tribute to mid-century American design. The Suita sofa family encompasses a wide range of components. These can be used as

independent elements or freely combined to adapt to all kinds of interior environments and furnishing needs.

The seat and back cushions come in a choice of firm or soft versions, and are optionally available with tufting.



Antonio Citterio

The architect and designer Antonio Citterio, who lives and works in Milan, has collaborated with Vitra since 1988. Together they have produced a series of

office chairs and various office systems, as well as products for the Vitra Home Collection. The Citterio Collection is constantly being expanded.

- 1-9 Suita
- 10-11 Types of upholstery
- 12-17 Suita product family
- 18-21 Additional elements
- 22-27 Combining elements

- 30-31 Suita cushions
- 34-41 Vitra Cushions
- 42-45 Upholstery structure
- 46-47 Quality, longevity, warranty

- 50-73 Upholstery fabrics and leather
- Useful facts
- 74-77 Dimensions



Suita Sofa 3-Seater with pointed cushions, in Corsaro cover fabric (01 pale blue melange)

Types of upholstery

vitra.

vitra.

The Suita Sofa family encompasses a wide range of elements that can be combined in any manner and further customised with a choice of different cushions to suit individual needs and preferences.

The sleek body, consisting of a tubular steel frame covered in moulded polyurethane foam with web suspension, forms the basis of all Suita models. It can be fitted with either soft or firmly upholstered seat cushions.

The Suita Sofa exhibits a different aesthetic depending on the selected seat and back cushions: from cosy casual with pointed cushions to the elegant classic version as well as a tufted variant with a handcrafted look.



Classic cushions

Firm or soft padding,
available with fabric or leather covers

Pointed cushions

Soft padding,
available with fabric or leather covers

Tufted cushions

Soft padding,
available with fabric covers

Classic cushions

Elegant design with large back cushions,
linear contours, formal.

Pointed cushions

Casual soft look with inviting comfort, for
relaxed seating or reclining.

Tufted cushions

The tufting on the cushions adds a touch
of handcrafted refinement.



Suita Sofa 3-Seater with pointed cushions (soft)



Suita Sofa 3-Seater with classic cushions (soft or firm)



Suita Sofa 3-Seater with tufted cushions (soft)

Suita product family



- 1 2-Seater Sofa
- 2 3-Seater Sofa
- 3 2-Seater Sofa open, left/right
- 4 3-Seater Sofa open, left/right
- 5 Chaise Longue small, left/right
- 6 Chaise Longue large, left/right
- 7 Ottoman
- 8 Daybed

Materials

- **Legs:** die-cast aluminium, polished or powder-coated.
- **Body:** webbed metal frame with moulded polyurethane foam.
- **Classic seat cushions, firm:** polyurethane foam and polyester fibre.

- **Classic seat cushions, soft and tufted:** polyurethane foam core and chamber cushion overlay (filled with polyurethane foam lozenges, latex and a mix of goose feathers and down).
- **Seat height:** 430 mm (315 mm with applied load, measured in accordance with EN 1335-1:2000).

- **Classic back cushions, firm:** chamber cushions filled with polyurethane chips and feathers.
- **Classic back cushions, soft:** chamber cushions filled with polyurethane foam cubes and feathers.
- **Tufted back cushions:** chamber cushions filled with polyurethane foam cubes and ball fibres.

- **Pointed cushions and bolsters (Vitra Cushions):** the cushions in the sizes 80 x 60 cm, 60 x 60 cm, 60 x 40 cm and the bolster measuring 54 x Ø 16 cm offer supportive comfort and are filled with 100% recycled PET fibres containing post-industrial and post-consumer waste; the 40 x 40 cm cushion offers

- soft comfort and is filled with 100% recycled polyester made of post-consumer waste.
- **Armrest cushion and headrest cushion:** 100% recycled PET fibre.
- **Covers:** removable.
- **Glides:** non-slip.
- **Shelf:** aluminium profile, powder-coated die-cast zinc with linoleum inlay.



2-Seater



3-Seater



2-Seater open

The Suita Sofa comes in closed 2-seater and 3-seater models as well as open versions with a single armrest on the left or right, which can be paired with chaises longues in various lengths.



3-Seater open

Tufted cushions

One particularity of tufted seat cushions is that they are always exclusively available in a full-length version, i.e. Suita Sofa 3-Seater and Chaise Longue large also have just one full-length seat cushion. Another characteristic of the 3-seater model with tufting is the number of back cushions – there are three back cushions.

- **Note:** the designations ‚left‘ and ‚right‘ refer to the perspective when viewing the sofa from the front.
- **Note:** ripples and indentations from sitting (pressure marks) and partially visible outlines of the chamber cushions are characteristic of high-quality, soft upholstery in combination with a removable cover and can be more or less pronounced, depending on the selected cover material. To retain the fullness and shape of your sofa, cushions should be regularly shaken and plumped.
- **Application:** soft upholstery version recommended for domestic use only.



3-Seater with classic cushions



3-Seater with pointed cushions



3-Seater with tufted cushions



The Suita Daybed is an elegant lounge with soft upholstery and a classic neck bolster. It is exclusively available with tufted upholstery.

- **Daybed:** metal frame with wooden panel, polyurethane foam, soft seat cushion.
- **Covers:** removable.
- **Glides:** non-slip.

Chaise Longue small



Chaise Longue large

The chaise longues of the Suita sofa family by Antonio Citterio are available in the sizes small and large. They can be perfectly combined with the single-armrest Suita sofas but also make a striking solo piece.



The Suita Ottoman is available in a soft tufted version or a firm non-tufted variant. It can be flexibly positioned and is the ideal companion to the sofa to take full advantage of the latter's comfort with the legs stretched out.

- **Ottoman, firm:** wooden panel, polyurethane foam, firm seat cushion.
- **Ottoman, soft and tufted:** wooden panel, polyurethane foam core and chamber cushion overlay (filled with polyurethane foam lozenges, latex and a mix of goose feathers and down).
- **Covers:** removable.
- **Glides (for Suita Ottoman and Suita Club Armchair):** glides for carpet or felt glides for hard floors.



The Suita Club Armchair can be combined with any member of the Suita Sofa family, but can also be used on its own or paired with many other sofa models. It is generously upholstered, ensuring excellent comfort even without additional cushions.

- **Body:** moulded polyurethane foam with webbed metal frame.
- **Seat cushion:** polyurethane foam and polyester fibre.
- **Seat height:** 430 mm (applied load 355 mm, measured in accordance with EN 1335-1:2000).
- **Legs:** die-cast aluminium, polished or powder-coated.

Accessories

Head section

Both the 2-Seater and 3-Seater sofas in the Suita family can be fitted with a headrest extension. The head section is available in all cover materials.

All versions of the Suita Chaise Longue can be equipped with a head section, which comes in all cover materials.

Head cushions offer enhanced comfort.



Shelf

The Suita 2-Seater and 3-Seater Sofas in both closed and open versions can be fitted with a shelf consisting of an aluminium profile with a linoleum inlay. Added to a freestanding Suita Sofa, the rear-mounted shelf makes a perfect temporary workspace in combination with a laptop and a chair. Positioned against the wall, the shelf offers a convenient surface for storage and display.



vitra.

Legs and frame

The structural body of Suita rests on bridge-like legs. Shelf elements and head sections are also attached to the legs. The Suita Sofa has a comfortable seat height of 25 cm. The aluminium legs and frame have a polished finish or are alternatively powder-coated in basic dark.

Polished aluminium

Suita configuration featuring 2-Seater sofa with open end, Chaise Longue large with head section and ottoman, Linho cover fabric (01 pearl), frame and legs in polished aluminium.



Powder-coated in basic dark

Suita configuration featuring 2-Seater sofa with open end, Chaise Longue large with head section and ottoman, Linho cover fabric (07 olive), frame and legs in powder-coated aluminium with basic dark finish. Shelf in basic dark with linoleum inlay (02 charcoal).



Suíta Sofa 2-Seater open, Chaise Longue small, 2-Seater with pointed cushions, in Linho cover fabric (09 atlantic)

Combining elements

Corner configurations with open and closed sofa elements

The sofa elements can be positioned side by side and will stay in place, thanks to their non-slip glides.



Corner configuration with 2-Seater and 2-Seater open, with pointed cushions. Four Vitra Cushions come with each 2-Seater: 1x 60 x 80 cm, 1x 60 x 60 cm, 1x 40 x 60 cm (supportive comfort) and 1x 40 x 40 cm (soft comfort). The table below shows which cushions are included with each element. Additional Vitra Cushions can be separately ordered as needed.

Pointed cushion sets	80 x 60 cm	60 x 60 cm	60 x 40 cm	40 x 40 cm	54 x 16 cm
2-Seater	1x	1x	1x	1x	
3-Seater	1x	2x	1x	1x	

For corner configurations consisting of an open and a closed element, a corner cushion is available in classic and tufted upholstery variants to cover the 'gap' created in this combination. This corner cushion has to be ordered via the spare parts catalogue or from the Vitra Service team. (For the version with pointed cushions, additional Vitra Cushions can simply be ordered as needed.)



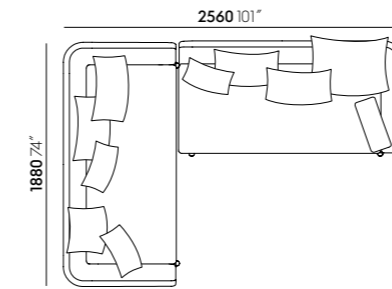
Corner configuration with 2-Seater open and 3-Seater, with classic cushions. Additional armrest cushions serve to frame the configuration at the sides.



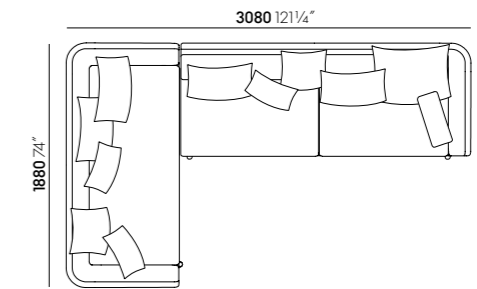
Corner configuration with 3-Seater open and 3-Seater, with tufted cushions.

Dimensions

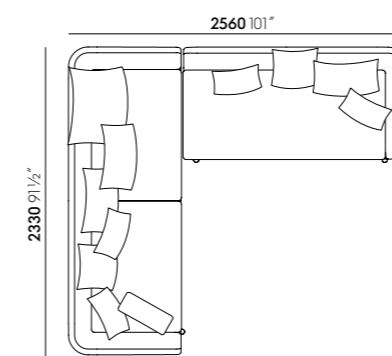
Corner configurations with open and closed sofa elements



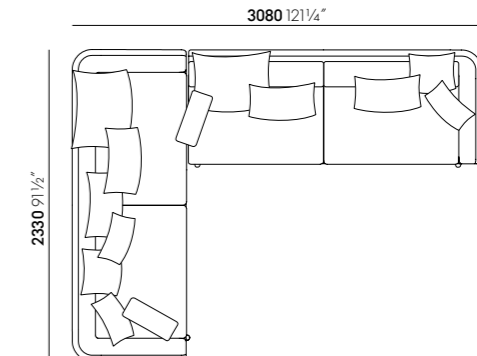
Suita Sofa 2-Seater, Suita Sofa 2-Seater open



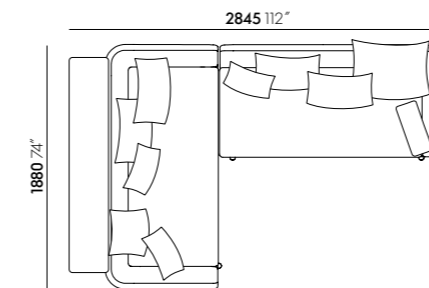
Suita Sofa 2-Seater, Suita Sofa 3-Seater open



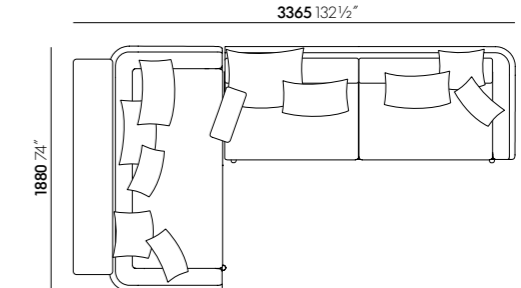
Suita Sofa 3-Seater, Suita Sofa 2-Seater open



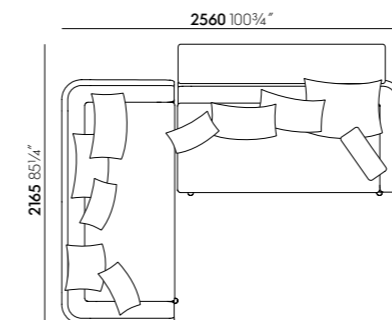
Suita Sofa 3-Seater, Suita Sofa 3-Seater open



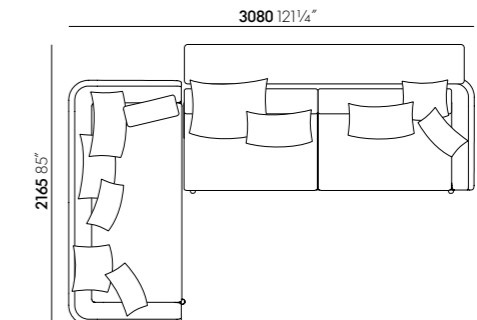
Suita Sofa 2-Seater with shelf, Suita Sofa 2-Seater open



Suita Sofa 2-Seater with shelf, Suita Sofa 3-Seater open



Suita Sofa 2-Seater, Suita Sofa 2-Seater open with shelf



Suita Sofa 2-Seater, Suita Sofa 3-Seater open with shelf

Combining elements

Corner configurations with open sofas plus chaise longue



Configuration featuring 3-Seater open with shelf and Chaise Longue large with head section, with pointed cushions. Additional Vitra Cushions can be separately ordered as needed. The table below shows which cushions are included with each element.

Pointed cushion sets	80 x 60 cm	60 x 60 cm	60 x 40 cm	40 x 40 cm	54 x 16 cm
2-Seater	1x	1x	1x	1x	
3-Seater	1x	2x	1x	1x	
Chaise Longue small		1x	1x		
Chaise Longue large	1x	1x	1x	1x	



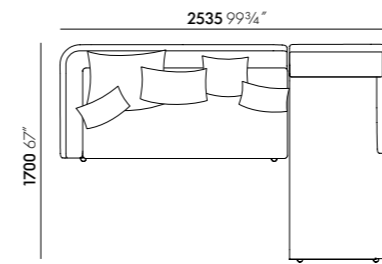
Configuration with 2-Seater open and Chaise Longue small, with classic cushions. An additional armrest cushion and a single pointed cushion frame the configuration at the sides.



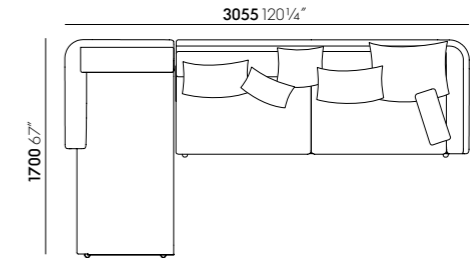
Corner configuration with 2-Seater open and Chaise Longue small, with tufted cushions. Additional Vitra Cushions may be ordered separately, such as the 2x 40 x 60 cm and 1x 40 x 40 cm seen here.

Dimensions

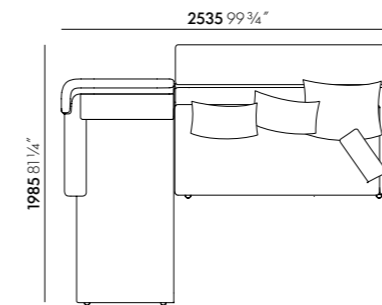
Corner configurations with open sofas plus chaise longue



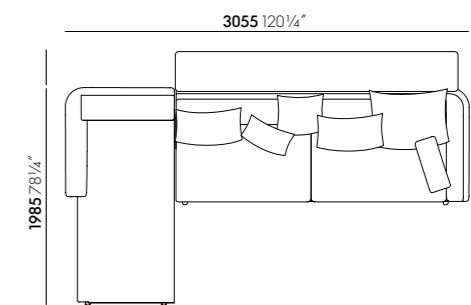
Suita Chaise Longue small, Suita Sofa 2-Seater open



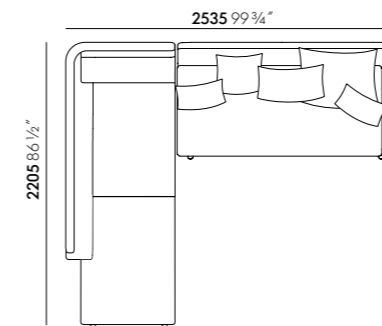
Suita Chaise Longue small, Suita Sofa 3-Seater open



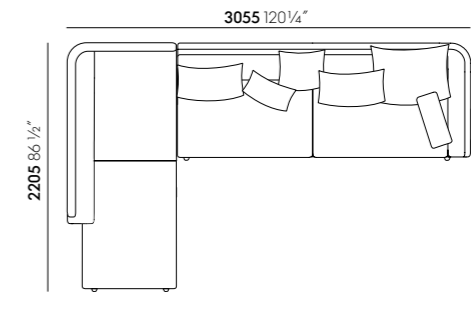
Suita Chaise Longue small with head section, Suita Sofa 2-Seater open with shelf



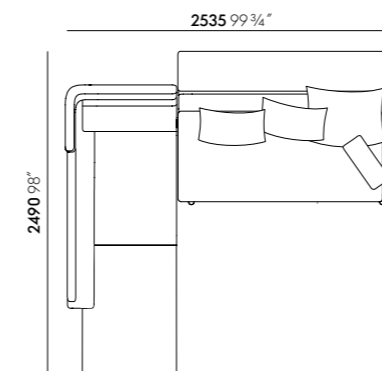
Suita Chaise Longue small, Suita Sofa 3-Seater open with shelf



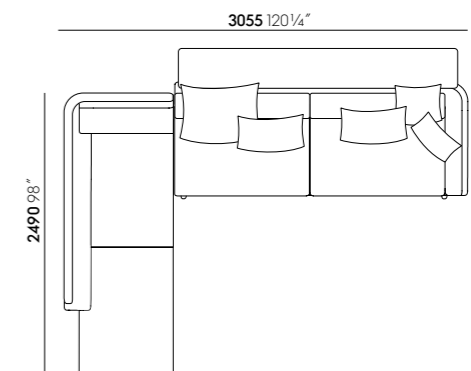
Suita Chaise Longue large, Suita Sofa 2-Seater open



Suita Chaise Longue large, Suita Sofa 3-Seater open



Suita Chaise Longue large with head section, Suita Sofa 2-Seater open



Suita Chaise Longue large, Suita Sofa 2-Seater open with shelf

Combining elements

Configurations with open 2-seater and open 3-seater sofas



Dimensions

Configurations with open 2-seater and open 3-seater sofas



Configuration with two open 3-seater sofas, with pointed cushions plus three extra Vitra Cushions. Additional Vitra Cushions can be separately ordered as needed. The table below indicates which cushions are provided for each furniture model.

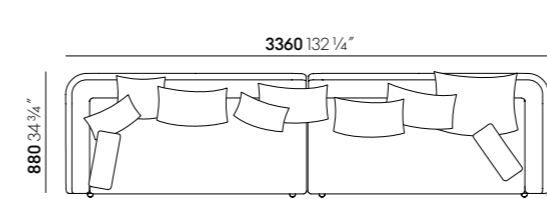
Pointed cushion sets	80 x 60 cm	60 x 60 cm	60 x 40 cm	40 x 40 cm	54 x 16 cm
2-Seater	1x	1x	1x	1x	
3-Seater	1x	2x	1x	1x	



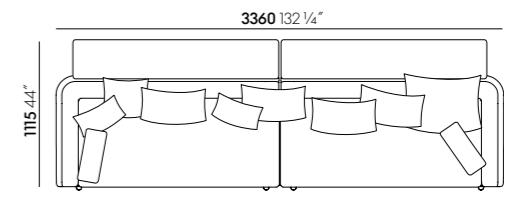
Configuration with two open 3-seater sofas, with classic cushions. Two additional armrest cushions round off the configuration. Please order separately.



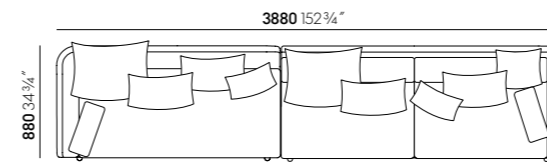
Configuration with two open 2-seater sofas, with tufted cushions. Additional Vitra Cushions can be separately ordered as needed.



2x Suita Sofa 2-Seater open



2x Suita Sofa 2-Seater open with shelf



Suita Sofa 2-Seater open, Suita Sofa 3-Seater open



2x Suita Sofa 3-Seater open



Suita Sofa 3-Seater with pointed cushions, in Savana cover fabric (01 pearl melange)



Selection of pointed cushions

Additional pointed cushions in a range of sizes as well as bolsters can be ordered for all Suita elements. The table below indicates the standard number and sizes of cushions provided with each furniture model. Other cushions such as the armrest cushion or head section cushion can be ordered individually.

- **Cover:** removable; diverse types of fabric and leather with different material compositions. To avoid shrinkage or damage, covers should be

professionally cleaned – do not put in the washing machine.

- **Filling:** the cushions in the sizes 80 x 60 cm, 60 x 60 cm, 60 x 40 cm and 54 x 16 cm provide supportive comfort and are filled with 100% recycled PET fibres with components from post-industrial and post-consumer waste; the cushions measuring 40 x 40 cm, 50 x 50 cm, 65 x 55 cm, 40 x 30 cm and 65 x 30 cm offer soft comfort and are filled with 100% recycled polyester made of post-consumer waste.
- **Note:** cushions should be regularly shaken and plumped to retain their fullness and shape.



Pointed cushion sets	80 x 60 cm	60 x 60 cm	60 x 40 cm	40 x 40 cm	54 x 16 cm
2-Seater	1x	1x	1x	1x	
3-Seater	1x	2x	1x	1x	
Chaise Longue small		1x	1x		
Chaise Longue large	1x	1x	1x	1x	
Daybed					1x



Armrest cushion

The armrest cushion comes in a single size for use with all three versions – classic, pointed or tufted cushions. It is not included as standard and must be added to the sofa configuration when ordering.



Number of seat and back cushions per sofa element

	Seat cushion	Back cushion
2-Seater		
Classic	1x	2x
Pointed cushions	1x	4x
Tufted	1x	2x
3-Seater		
Classic	2x	2x
Pointed cushions	2x	5x
Tufted	1x	3x
Chaise Longue small		
Classic	1x	1x
Pointed cushions	1x	2x
Tufted	1x	1x
Chaise Longue large		
Classic	2x	3x
Pointed cushions	2x	4x
Tufted	1x	3x



Suita Sofa 3-Seater with classic cushions, in Nubia cover fabric (05 cream/dark brown)

Vitra Cushions

2024

Vitra Cushions encompass a range of cushions and bolsters in nine different sizes. The cushions provide additional comfort and create colour accents. They can be ordered in any of the available Vitra upholstery fabrics, choices of leather and colours. Further information and inspiration can be found at vitra.com/vitracushions.



Vitra Cushions, supportive comfort
Filling made of 100% recycled PET fibres
80 x 60 cm, 60 x 60 cm, 60 x 40 cm, bolster
54 x ø16 cm



Vitra Cushions, soft comfort
Filling made of 100% recycled polyester
65 x 55 cm, 65 x 30 cm, 50 x 50 cm, 40 x 40 cm,
40 x 30 cm



Lumbar support for sitting



Cushion 40 x 40 cm, soft comfort



Cushion 50 x 50 cm, soft comfort



Cushion 30 x 65 cm, soft comfort



Cushion 40 x 60 cm, supportive comfort

Pillow cushions for lying down



Bolster 54 x ø16 cm, supportive comfort



Cushion 40 x 60 cm, supportive comfort

Corner cushions for sofa and chaise longue



Cushion 40 x 40 cm, soft comfort



Cushion 50 x 50 cm, soft comfort



Cushion 55 x 65 cm, soft comfort



Cushions 30 x 65 cm and 55 x 65 cm, soft comfort

Other decorative and supportive cushions



Decorative cushion 30 x 40 cm, soft comfort



Decorative cushions 30 x 40 cm and 40 x 40 cm, soft comfort



Decorative cushions 30 x 40 cm and 40 x 40 cm, soft comfort



All covers are removable and can be professionally dry cleaned.



The filling contains zero animal-based elements, such as down or feathers, and consists only of either recycled PET fibres or recycled polyester, which can be separated according to material at the end of the cushions' lifespan and are both 100% recyclable.

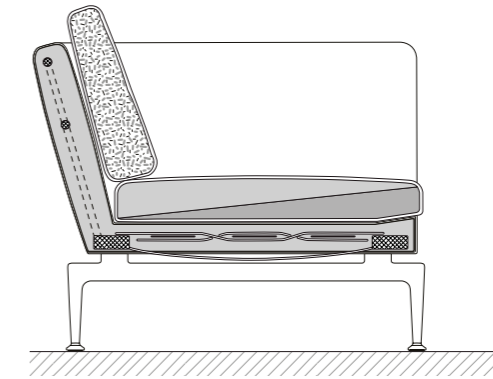
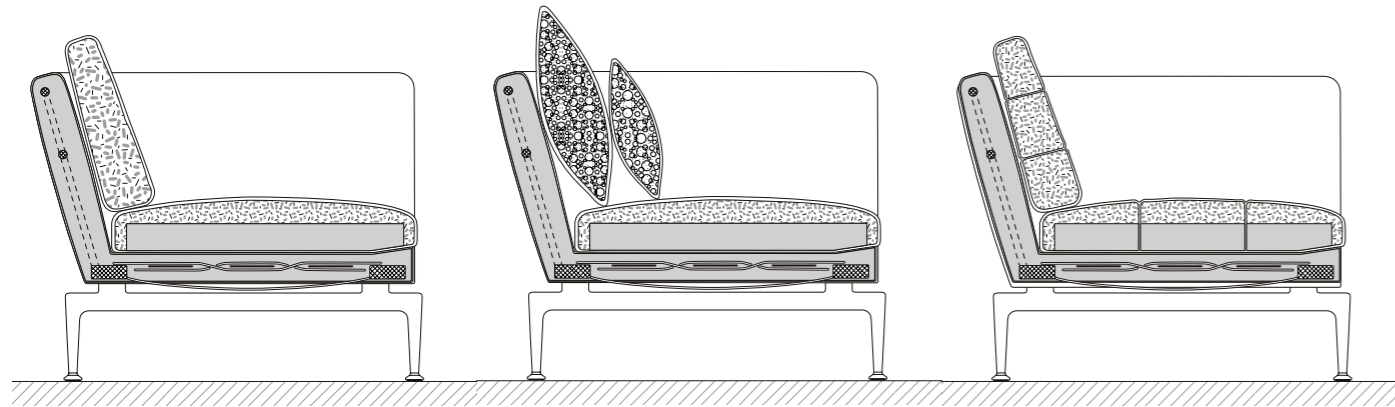
The cushions in the sizes 80 x 60 cm, 60 x 60 cm, 60 x 40 cm and 54 x Ø 16 cm provide supportive comfort and are filled with 100% recycled PET fibres.



The cushions measuring 40 x 40 cm, 50 x 50 cm, 65 x 55 cm, 40 x 30 cm and 65 x 30 cm offer soft comfort and are filled with 100% recycled polyester made of post-consumer waste.

“What a curious feeling!” said Alice.

“I must be shutting up like a telescope!”



Soft seat upholstery, soft classic, pointed and tufted cushions

The soft upholstery is distinguished by its cosy appearance and supple comfort. It allows the sitter to sink into the cushioning more deeply than with the firmer upholstery and creates an inviting place to lounge and relax.

The seat upholstery consists of a polyurethane foam core surrounded by a chamber cushion structure filled with polyurethane lozenges, latex and a mix of goose feathers and down.

The large classic back cushion has a chamber structure containing a blend of polyurethane foam cubes and feathers. The tufted back cushions are chamber cushions filled with polyurethane foam cubes and ball fibres.

The pointed cushions are available from the collection of Vitra Cushions and filled with either 100% recycled PET fibres or 100% recycled polyester.

The appearance of the soft upholstery elements conveys a feeling of cosy comfort. The cover material is loosely fitted and forms gentle folds.

The tufted version only comes with fabric covers. Both the softly upholstered classic version and the variant with pointed cushions are available with covers in fabric or leather.

Firm seat upholstery and firm classic cushions

The firm upholstery version provides resilient support, yielding only partially to the weight of the sitter. Its firm padding makes it easy to sit down and stand up. The seat cushion comprises various foam layers, referred to as a sandwich construction. It is softer towards the back and firmer in front, thus providing enhanced support for the sitter.

The back cushions have a chamber cushion structure filled with a mixture of feathers and polyurethane rods.

The crisp appearance of the firm upholstery elements is characterised by linear, geometric forms.

Firm upholstery versions are available with covers in fabric or leather.

Useful facts about upholstery

Vitra has over fifty years of experience in the production of upholstered furniture. Premium materials, skilled craftsmanship and high quality standards at Vitra are a guarantee for long-lasting products. In Vitra's own Test Center our upholstered furnishings are regularly subjected to rigorous tests that far exceed common standards.

Care instructions:

Exposure to direct sunlight should be avoided, since ultraviolet rays can cause cover materials to fade.

To retain the original fullness and shape of your sofa, cushions should be regularly shaken and plumped.

Folds and creases from sitting can be prevented in all types of upholstery by smoothing the cover material after use.

Shaking and plumping



In this [video](#), we demonstrate how to best shake and plump cushions and upholstery to maintain their fullness and form.



Hola cover fabric (09 pearl)



The covers are fully removable. For optimal results, we recommend using a professional service to remove and replace the covers. Covers should be taken to a specialist dry cleaning facility for treatment.



Replacement covers can be ordered if necessary. Other spare parts may also be ordered at any time to further extend the product's lifespan.



Vitra Test Center

Vitra has its own Test Center where all sofas undergo rigorous testing to simulate 15 years of use. Vitra's inspection catalogue includes the world's toughest tests (simulation of worst-case

usage), with requirements that far exceed standard regulations. Over the years, Vitra has developed additional tests of its own that are not found in any official catalogue of standards.

Vitra Product Warranty

Designed and manufactured for longevity, Vitra products are backed by a quality promise guiding every aspect of their development and production. Registered products qualify for either a 10- or 30-year warranty, unlocking various benefits including product identification, origin tracing, and access to designer information and care instructions. This warranty reflects Vitra's commitment to sustainability.

Full terms and conditions and further information are available [here](#) for review. For USA & Canada, specific conditions apply.

The Suita Sofa is eligible for the 10-year Vitra Product Warranty when registered through <https://my.vitra.com> for private use.

Spare parts

For new covers or other spare parts, please contact the Vitra Service team or a local Vitra dealer.

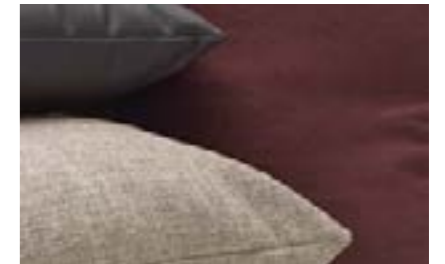
[Link to website](#)



Care instructions

Here you will find care instructions for cover fabrics, leather, plastics and metals.

[Link to website](#)



Maintenance

For matters relating to maintenance and repair or general enquiries, contact our Service Team using the following form.

[Link to Service Team contact form](#)



Find Vitra

Here you can find the nearest Vitra location or a Vitra partner for local assistance.

[Find Vitra](#)





Suita Sofa 2-Seater and Chaise Longue small with classic cushions, in Kvadrat Sonar cover fabric (colour 0173)

Upholstery fabrics and leather

Suita comes in a choice of 13 fabrics and 3 leather options.

Details on the individual fabrics and leathers can be found on the following pages.

Heavy use:

Cosy 2 - F 80
Credo - F 120
Laser RE - F 40
Volo - F 80
Leather - L 20

Medium use:

Cento - F 120
Corsaro - F 80
Hola - F 40
Dumet - F 80
Iroko 2 - F 80
Nubia - F 100
Reed - F 100
Leather Premium F - L 50

Residential use:

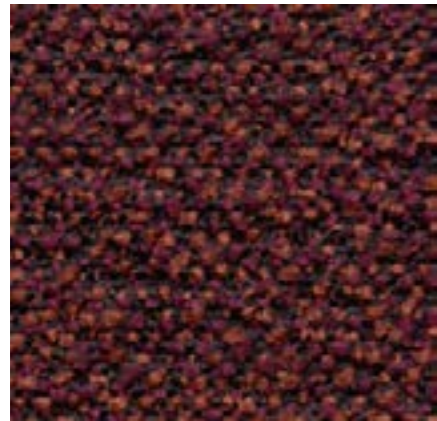
Linho - F 80
Savana - F 80
Leather Natural F - L 60





Corner configuration with Suita Sofa 3-Seater open and Suita Sofa 2-Seater, soft upholstery with classic cushions and additional corner cushion in Cento (12 dark red melange)

Cento Medium use, F120



Cento is made of 100% high-quality virgin wool. Its bouclé appearance and three-dimensional structure create a lively surface texture with a voluminous granular feel. Thanks to the sustainable purity of the wool, Cento has been granted the EU Ecolabel.

Cento is available in 14 colours.

Material	100% new wool
Weight	620 g/m ² (18.3 oz/y ²)
Width	147 cm +/- 2 cm (58")
Abrasion resistance	30,000 Martindale
Fastness to light	Type 5
Pilling	Grade 4-5
Fastness to rubbing	Grade 4 dry and wet

Cento



Suita Chaise Longue small, Suita Sofa 2-Seater open and Suita Ottoman, tufted soft upholstery, with extra pointed cushions, in Corsaro (01 pale blue melange)

Corsaro Medium use, F80



Corsaro is a sophisticated combination of fine and coarse yarns that give the fabric a natural look with a Mediterranean flair. The two-tone and three-tone shades interwoven with several novelty yarns add particular vibrancy to large surface areas.

Corsaro is available in 13 colours.

Material	5% polyamide, 46% polyacrylics, 5% linen, 20% wool, 14% polyester, 10% cotton
Weight	450 g/m ² (13.3 oz/y ²)
Width	140 cm +/- 2 cm (55")
Abrasion resistance	35,000 Martindale
Fastness to light	Type 5
Pilling	Grade 3-4
Fastness to rubbing	Grade 3-4 dry and wet

Corsaro





Suita Sofa 3-Seater, soft upholstery with pointed cushions, in Cosy 2 (12 pale blue)

Cosy 2 Heavy use, F80



Cosy 2 is a high-quality milled woollen cloth with a warm character. The lively melange yarn emphasises the fabric's natural colours – from delicate shades to vibrant hues – and gains added elegance with colour-coordinated stitching. The fabric offers thermal comfort and excellent durability, making it suited for upholstered furniture in office settings as well as residential applications.

Cosy 2 is available in 15 colours.

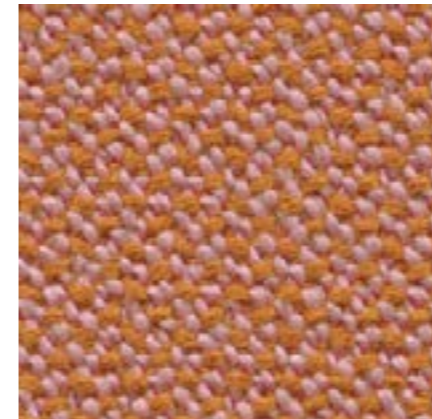
Material	20% polyamide, 80% new wool
Weight	590 g/m ² (17.4 oz/y ²)
Width	154 cm +/- 2 cm (61")
Abrasion resistance	50,000 Martindale
Fastness to light	Type 6
Pilling	Grade 4-5
Fastness to rubbing	Grade 4-5 dry and wet

Cosy 2 (cross stitch)



Suita Chaise Longue small, soft upholstery with pointed cushions plus two extra pointed cushions 40 x 40 cm, in Credo (18 pale rose/cognac)

Credo Heavy use, F120



Credo is a durable woollen fabric made of premium worsted yarn with a pleasant feel. The two- and three-tone colours give this fabric a characteristic structure and vibrant appearance. Credo allows for an effective exchange of heat to ensure comfortable thermal conditions for the sitter. The fabric can also be used in office environments.

Credo is available in 22 colours.

Material	5% polyamide, 95% new wool
Weight	640 g/m ² (18.9 oz/y ²)
Width	145 cm +/- 2 cm (57")
Abrasion resistance	100,000 Martindale
Fastness to light	Type 6
Pilling	Grade 4-5
Fastness to rubbing	Grade 4-5 dry and wet

Credo





Suita Sofa 2-Seater and Suita Sofa 2-Seater open, soft upholstery with pointed cushions, in Dumet (01 ivory melange)

Dumet Medium use, F80



Dumet is a cotton blend in a plain weave with a lively appearance. The natural mixed tones create an elegant look with an Italian flair. Dumet is soft and cool to the touch.

Dumet is available in 20 colours.

Material 9% polyamide, 8% linen, 22% wool, 46% cotton, 15% rayon

Weight 485 g/m² (14.3 oz/y²)
Width 147 cm +/- 2 cm (58")
Abrasion resistance 40,000 Martindale

Fastness to light Type 5

Pilling Grade 3-4
Fastness to rubbing Grade 3-4 dry and wet

Dumet



Suita Sofa 2-Seater and Suita Daybed, tufted soft upholstery, with extra pointed cushions, in Hola (08 mint)

Hola Medium use, F40



Hola is a textile made from 100% recycled polyester. Its finely textured threads are woven into a soft comfortable fabric with an understated expression and almost cotton-like feel. It is simultaneously also resilient enough to be used in semi-public spaces such as hotel lobbies. Hola is Oekotex-certified and manufactured using a dyeing process with a closed water cycle.

Hola is available in 11 colours.

Material 100% recycled polyester
Weight 470 g/m² (13.9 oz/y²)
Width 142 cm +/- 2 cm (56")
Abrasion resistance 60,000 Martindale

Fastness to light Type 5

Pilling Grade 4-5
Fastness to rubbing Grade 4-5 dry and wet

Hola





vitra.

Suita Club Armchair, with extra pointed cushions and Suita Sofa 2-Seater with head section and cushions for head section, firm upholstery with classic cushions and two armrest cushions, in Iroko (01 lemon)

Iroko 2 Medium use, F80



Iroko 2 is a soft, flat woven fabric made with chenille yarn. The piles in the yarn give the weave a lively surface texture with an inviting, velvety touch. The fabric's cotton fibres provide excellent cooling properties.

Iroko 2 is available in 17 colours.

Material	48% polyacrylics, 20% polyester, 32% cotton
Weight	700 g/m ² (20.6 oz/y ²)
Width	152 cm +/- 3 cm (60")
Abrasion resistance	40,000 Martindale
Fastness to light	Type 5
Pilling	Grade 3-4
Fastness to rubbing	Grade 3-4 dry and wet

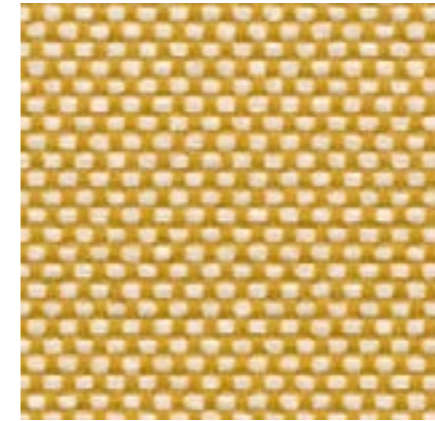
Iroko 2



vitra.

2x Suita Sofa 2-Seater, each with 2 bolsters, tufted soft upholstery, in Laser RE (66 papyrus/cream)

Laser RE Heavy use, F40



The environmentally friendly fabric Laser RE is made from recycled polyester. It has a distinctive woven appearance, which is particularly accentuated by contrasting duotones in a varied palette of 25 colours. Practical and easy to care for, as well as durable and highly abrasion-resistant, Laser RE is also well suited for office environments.

Laser RE is available in 25 colours.

Material	100% recycled polyester
Weight	520 g/m ² (15.3 oz/y ²)
Width	144 cm +/- 2 cm (57")
Abrasion resistance	100,000 Martindale
Fastness to light	Type 6
Pilling	Grade 4-5
Fastness to rubbing	Grade 4-5 dry and wet

Laser RE





Suita Sofa 2-Seater open, Suita Chaise Longue small with head section and extra pointed cushions, tufted soft upholstery, in Linho (07 olive)

Linho Residential use, F80

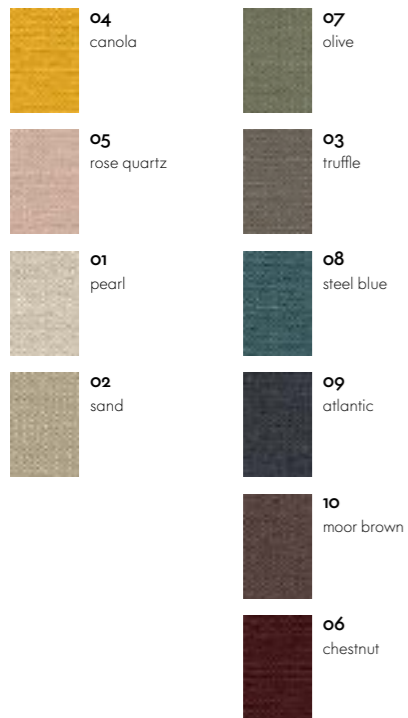


The high-quality linen fabric Linho is manufactured in Belgium, from the plant to the finished textile. It has the slightly irregular appearance that is typical of linen yarn. Due to its high percentage of linen, Linho tends to form elegant creases, lending a natural look to soft upholstered furniture.

Linho is available in 10 colours.

Material	9% polyamide, 91% linen
Weight	450 g/m ² (13.3 oz/y ²)
Width	137 cm +/- 2 cm (54")
Abrasion resistance	18,000 Martindale
Fastness to light	Type 5
Pilling	Grade 3-4
Fastness to rubbing	Grade 3 dry and wet

Linho



2x Suita Sofa 2-Seater open, soft upholstery with pointed cushions and Suita Ottoman, in Nubia (03 cream/sand)

Nubia Medium use, F100

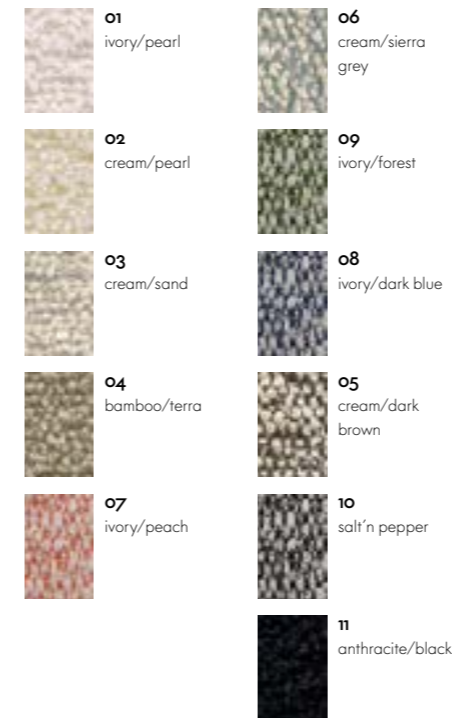


Nubia is a blended fabric with a very lively, natural appearance. Its fine sub-structure is interspersed with voluminous bouclé yarn, which gives the fabric depth and a soft, inviting touch. The varying combinations of yarns yield either contrasting or calm colour compositions with a distinctly Mediterranean flair.

Nubia is available in 11 colours.

Material	2% polyamide, 30% new wool, 25% polyacrylics, 43% polyester
Weight	570 g/m ² (16.8 oz/y ²)
Width	140 cm (55")
Abrasion resistance	35,000 Martindale
Fastness to light	Type 5
Pilling	Grade 4
Fastness to rubbing	Grade 3-4 dry and wet

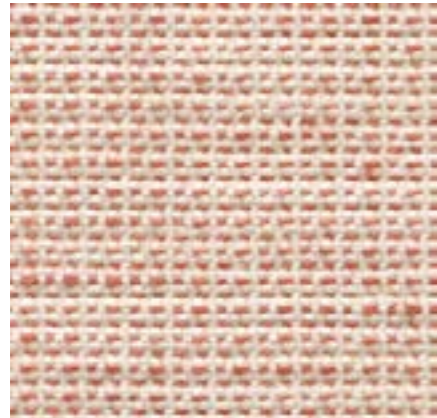
Nubia





Suita Sofa 2-Seater open, Suita Chaise Longue large with pointed cushions and Suita Ottoman in Reed (09 rose quartz)

Reed Medium use, F100

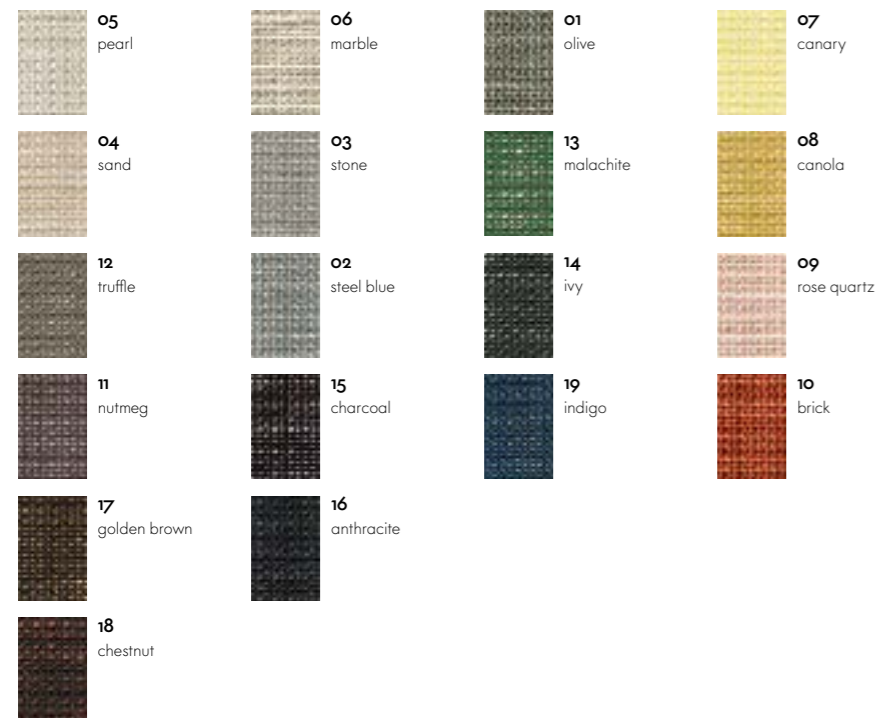


The elegant finely patterned fabric Reed is a blend of linen, wool and cotton. The structure of the fabric designed by Hella Jongerius has a hand-made look, its irregular lively linen yarn lending the fabric a natural expression. Reed is cool and soft to the touch and can be perfectly combined with other fabrics and materials.

Reed is available in 19 colours.

Material	7% polyamide, 25% new wool, 20% linen, 48% cotton
Weight	400 g/m ² (11.8 oz/y ²)
Width	142 cm +/- 2 cm (56")
Abrasion resistance	50,000 Martindale
Fastness to light	Type 5
Pilling	Grade 3-4
Fastness to rubbing	Grade 3-4 dry and wet

Reed



Suita Sofa 2-Seater and Suita Sofa 2-Seater open, soft upholstery with pointed cushions, in Savana (04 papyrus melange)

Savana Residential use, F80



Savana is a blended fabric woven from yarns of varying thickness, which give it an irregular texture with a lively and elegant appearance. A palette of subdued and natural earth tones, along with the dry, pleasant feel of the textile, emphasise the fabric's Italian flair.

Savana is available in 8 colours.

Material	8% polyamide, 50% polyacrylics, 23% linen, 19% cotton
Weight	820 g/m ² (24.2 oz/y ²)
Width	140 cm (55")
Abrasion resistance	30,000 Martindale
Fastness to light	Type 5
Pilling	Grade 3-4
Fastness to rubbing	Grade 3-4 dry and wet

Savana





Suita Sofa 3-Seater and Suita Sofa 2-Seater, firm upholstery with classic cushions, in Volo (o2 dark grey)

Volo Heavy use, F60

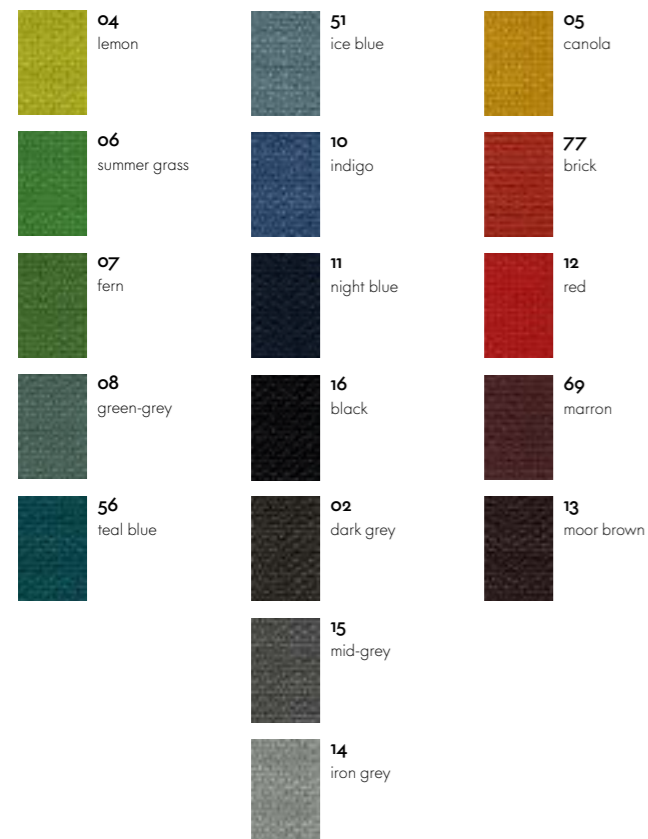


Volo is a finely structured wool blend with a refined weave that gives it an elegant appearance. This expressive textile shows strong solid colours to full advantage while simultaneously offering pleasant tactile qualities. With its soft look and appealing texture, Volo is a perfect fit for home interiors, but it is also well suited for use in the contract sector.

Volo is available in 17 colours.

Material	15% polyamide, 85% new wool
Weight	435 g/m ² (12.8 oz/y ²)
Width	145 cm +/- 3 cm (57")
Abrasion resistance	100,000 Martindale
Fastness to light	Type 6
Pilling	Grade 4-5
Fastness to rubbing	Grade 4-5 dry and wet

Volo



Useful facts about cover materials

Cover fabrics have a decisive influence on the appearance and characteristics of upholstered furniture. Along with the type of material, weave and aesthetic features of the textile, a major role is played by technical properties such as resistance to abrasion, fading or stains.

Function and performance are primarily determined by the type of fabric used. In general, synthetic fibres are superior to natural fibres in terms of their technical characteristics. For this reason, blends of different materials are employed to combine the advantages of the individual fibres.

In the following, you will find some of the key features of the textiles used by Vitra in its upholstery covers:

Cotton (CO)

Skin-friendly natural fibre of plant origin, comfortable to the touch, readily absorbs moisture. Often inferior to synthetic fibres with regard to colourfastness and light resistance, flat weaves susceptible to pilling.

Linen (LI)

Natural fibre of plant origin with slight lustre, cool and comfortable, repels dirt, no pilling. Limited colourfastness to light and crocking, creases easily.

Wool (WO)

Elastic natural fibre of animal origin, naturally self-cleaning – a brief airing disperses absorbed odours, leaving the wool smelling neutral and fresh again. Good resistance to light and abrasion, highly absorbent, minimal creasing, low flammability. Subject to pilling and matting.

Polyester (PE), Polyacrylic (PA), Viscose (VI)

Synthetic, highly uniform, lightfast fibres. The non-absorbent properties of synthetics can be mitigated with fibre blends and weaving techniques.

The overall look of a piece of furniture is influenced by the colour and type of cover fabric, its properties (elastic or non-stretch) as well as the upholstery technique (removable or attached covers). Consequently, a sofa can take on a different appearance depending on the cover material. Generally speaking, cover fabrics with some elasticity are less susceptible to creases and puckering, since they have an adaptable fit on three-dimensional forms. Heavier cover materials such as Over, Laser or Credo drape more smoothly, while thinner materials exhibit a finer rippling effect.



Suita in leather

vitra.



Available in a choice of three different high-quality leathers with diverse material properties, Suita can additionally be personalised by selecting from a wide palette of colours. The carefully sewn seams are also a specific design feature of Suita in leather.





vitra.

Suita Chaise Longue large with head section, Suita Sofa 3-Seater open with shelf, Suita Ottoman, soft upholstery with pointed cushions, in Leather (68 chocolate)

Leather Heavy use, L20



The standard grade leather used by Vitra is a robust cowhide leather, dyed-through, pigmented and embossed with an even grain pattern. Since it is hard-wearing and easy to maintain, it can also be used in office environments.

Leather is available in 16 colours.

Material	Robust cowhide with a distinctive, even grain
Fastness to light	Type 6
Thickness	1,1-1,3 mm
Fastness to rubbing	Grade 4 dry and wet

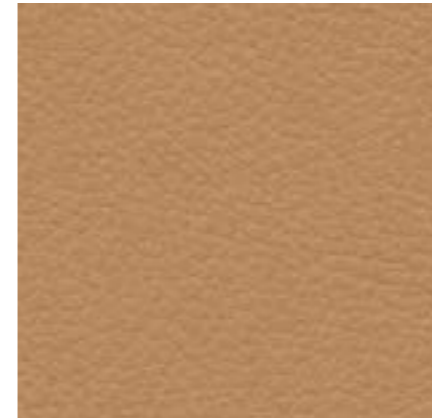
Leather



vitra.

Suita Chaise Longue large with head section and extra pointed cushions and Suita Sofa 2-Seater open, soft upholstery with classic cushions, in Leather Natural F (01 caramel)

Leather Natural F Residential use, L60

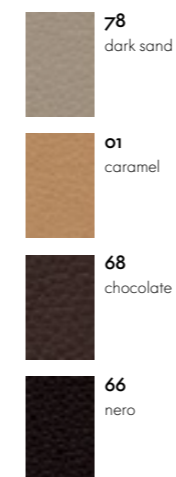


Leather Natural F is a very soft cowhide leather with an untreated grain. It is porous, breathable and acquires a lively patina through use. It is processed with a tanning agent extracted from olive tree leaves (a waste product of the olive harvest), and any chemicals used are harmless and applied in the smallest possible amounts.

This sustainable aniline leather exists in a choice of 4 colours.

Material	Aniline nappa leather with a natural open-pore grain, vegetable tanned
Fastness to light	Type 3
Thickness	1,3-1,5 mm

Leather Natural F





Suita Sofa 2-Seater open with armrest cushions, Suita Chaise Longue large, firm upholstery with classic cushions and Suita Ottoman in Leather Premium F (72 snow)

Leather Premium F Medium use, L50



Leather Premium F is a relatively smooth cowhide leather with a flat grain and fine top sheen. It is dyed-through, lightly pigmented and processed with a tanning agent extracted from olive tree leaves (a waste product of the olive harvest).

Leather Premium F is available in 22 colours.

Material	Semi-aniline nappa leather with a very soft and supple feel, vegetable tanned
Fastness to light	Type 5
Thickness	1,1–1,3 mm
Fastness to rubbing	Grade 4 dry and wet

Leather Premium F



Useful facts about leather

The products developed by Vitra in collaboration with internationally renowned designers are distinguished by excellent quality and great longevity. Based on the criteria of durability, warmth and comfort, high-quality leather is superior to almost any other material.

Leather is a robust natural product with an individual character that lends a timeless elegance to furnishings.

The quality of leather depends, in part, on the animals themselves: their breed, age and gender, their geographical origins and respective climate conditions. Vitra exclusively uses leather sourced from animals in Scandinavia and Central Europe. Scars, sting marks and scratches are normal characteristics of leather that highlight its natural appearance. Vitra utilises only the best hides.

Another factor that influences the quality of leather is the tanning of the skins. Tanning is the name of the process used to turn cowhide into leather. The art of tanning requires the same skill and attention to detail as it has for centuries: selected salt-cured skins are first soaked in water, then the hair is removed and the skin is prepared for tanning. The valuable outer skin is fleshed and cleaned before the actual tanning process begins. The skins are placed in large, rotating vats filled with tanning agents obtained from plants, minerals or synthetic compounds, which are absorbed by the fibres to make the leather soft and durable.

Vitra uses leather in three different qualities:

Pigmented leather (Leather)

Leather in standard quality is pigmented. It is especially robust and offers outstanding economical value. Highly resistant to both UV radiation and abrasion, its appearance and physical properties change very little over a long period of time. The top side of the skin is sanded, pigmented with an opaque surface colour and embossed with an even grain pattern. Pigmented leather is simple to care for and also easy to clean.

Semi-aniline leather (Leather Premium F)

Premium Leather F is a semi-aniline leather with a silky, smooth-grained surface. Semi-aniline leather is dyed through with a lightly pigmented finishing layer. Leather Premium F is a good choice for connoisseurs who value durability but also desire the soft, warm feel of natural leather. The beauty of this leather evolves with use, so that the upholstery acquires its typical patina as the years go by.

Aniline leather (Leather Natural F)

Leather Natural F is a pure aniline leather. It is dyed without a pigmented surface coating, making it less resistant to light but fully retaining its natural appearance. Only a minimal protective surface finish is applied. The natural processing of aniline leather gives it maximum breathability and a silky, soft feel. Careful treatment preserves the beauty of this exquisite cover material and lends it an appealing, individual patina.

Care instructions:

Furniture with leather upholstery should not be positioned in close proximity to heat sources, which can cause leather to dry out and become brittle. We also recommend that leather upholstery be protected from permanent exposure to direct sunlight, since intensive radiation can diminish the quality of leather and cause it to fade over time.

For occasional cleaning, add flakes of a hard neutral soap to distilled water and stir until frothy. Moisten a soft cloth (do not use microfibre cloths) and wipe gently over the leather surface, leaving it slightly damp. The ingredients in the soapy liquid remove dust and dirt, while also supplying the leather with needed conditioners.

Liquid spills should be immediately dabbed dry and wiped off with a little water (do not use microfibre cloths).

Small soiled spots can be removed with a colourless rubber eraser.

Once a year, the surface should be treated with a special leather care product. Avoid using harsh chemicals or aggressive cleaning agents. Please refer to the leather care instructions provided with your sofa.

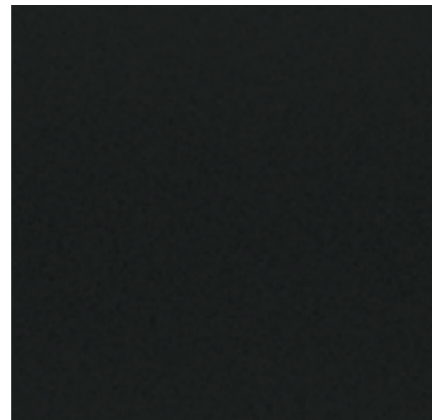
Additional information on leather care can be found at www.lck-international.com.



Base and frame

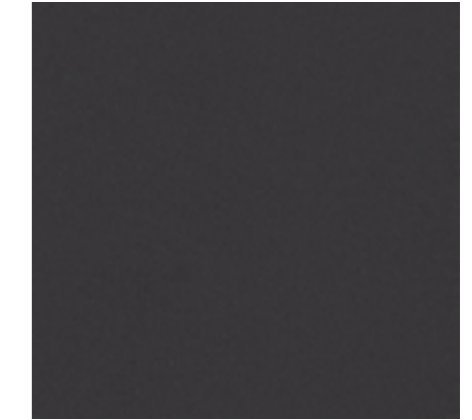
Shelf frame

Tray inlay



03
polished aluminium

30
basic dark powder-coated (smooth)



30
basic dark powder-coated (smooth)

01
pebble

02
charcoal

Aluminium

Vitra most frequently uses aluminium and steel for metal components. Since 94% less energy is required to produce recycled aluminium in comparison to primary aluminium, Vitra utilises aluminium consisting of 95% recycled material whenever possible.

Metal

Depending on the product, metal surfaces are either powder-coated, chrome-plated, polished, galvanised or lacquered. A smooth or textured powder-coated finish provides colour and surface protection.

Linoleum

Linoleum is derived from natural and renewable raw materials. This pliant, high-quality substance has a pleasant touch, and fingerprints are almost imperceptible on its surface. It is easy to care for and collects very little dust in comparison to other surface materials, thanks to its anti-static characteristics.

Dimensions

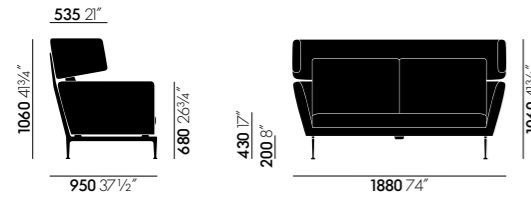
(in accordance with EN 1335-1:2000)

vitra.

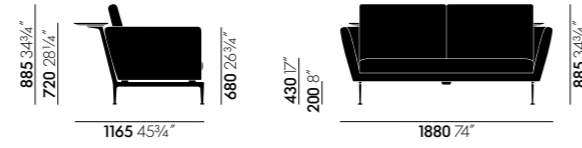
vitra.



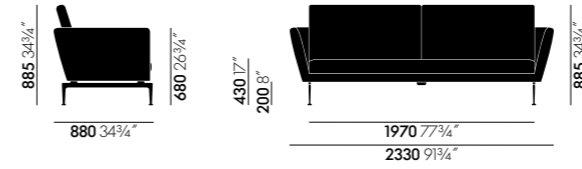
Suita Sofa 2-Seater



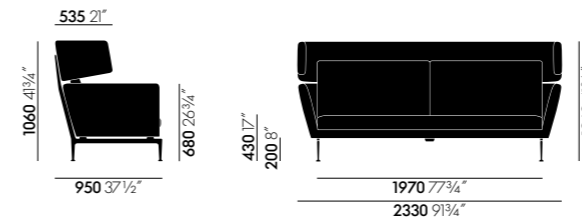
Suita Sofa 2-Seater with head section



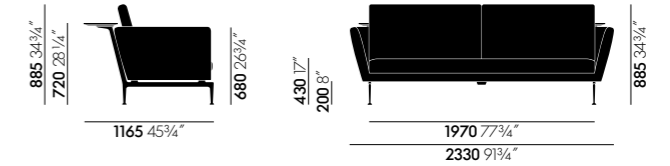
Suita Sofa 2-Seater with tray



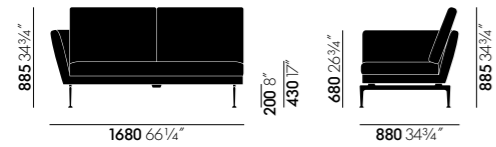
Suita Sofa 3-Seater



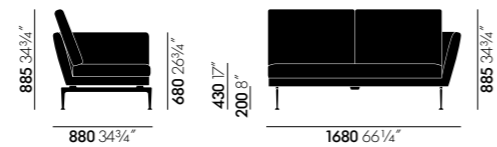
Suita Sofa 3-Seater with head section



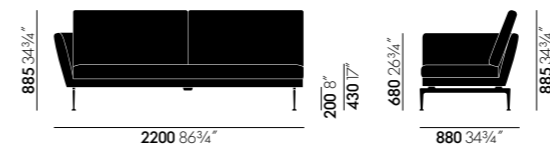
Suita Sofa 3-Seater with tray



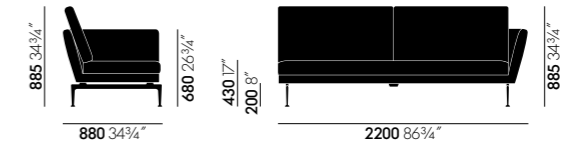
Suita Sofa 2-Seater, open, armrest left



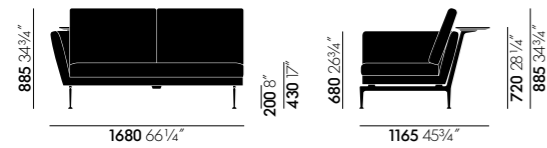
Suita Sofa 2-Seater, open, armrest right



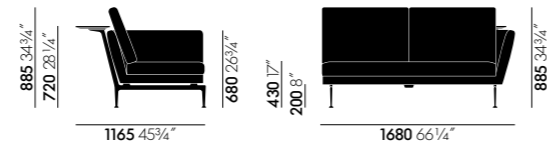
Suita Sofa 3-Seater, open, armrest left



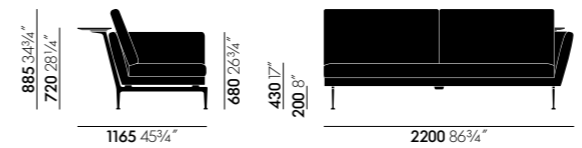
Suita Sofa 3-Seater, open, armrest right



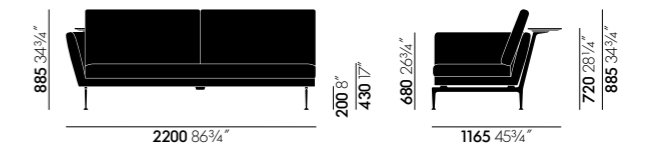
Suita Sofa 2-Seater, open, armrest left, with shelf



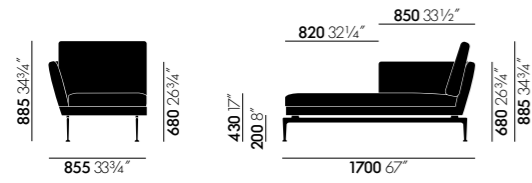
Suita Sofa 2-Seater, open, armrest right, with tray



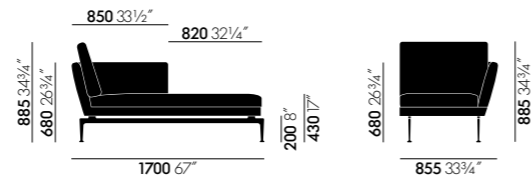
Suita Sofa 3-Seater, open, armrest right, with tray



Suita Sofa 3-Seater, open, armrest left, with shelf



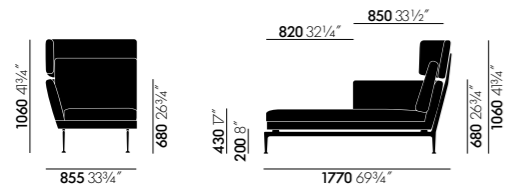
Suita Chaise Longue small, left



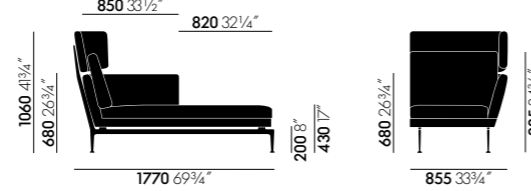
Suita Chaise Longue small, right



Suita Daybed



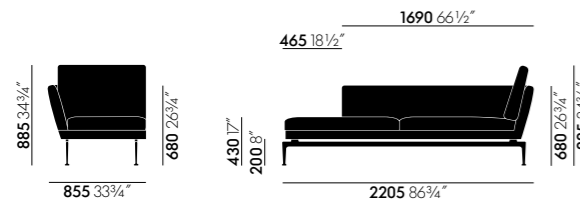
Suita Chaise Longue small, left, with head section



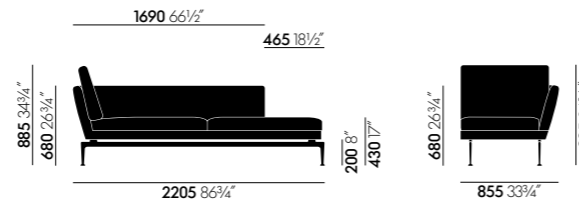
Suita Chaise Longue small, right, with head section



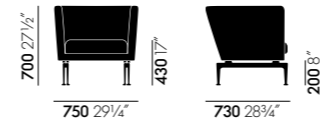
Suita Ottoman



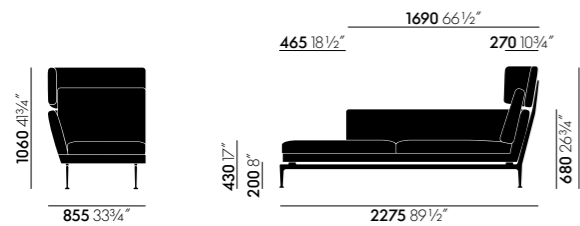
Suita Chaise Longue large, left



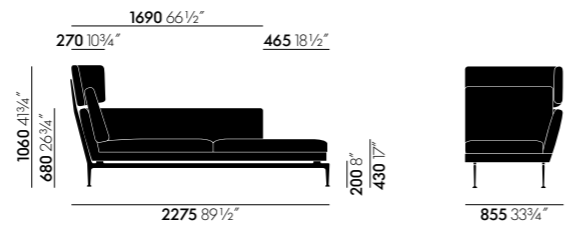
Suita Chaise Longue large, right



Club Armchair



Suita Chaise Longue large, left, with head section



Suita Chaise Longue large, right, with head section

