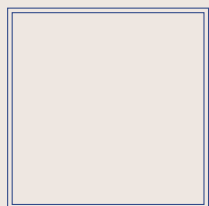


Montana

MONTANA Mini

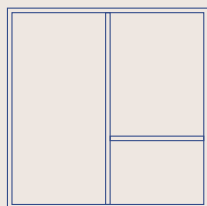


OPEN MODULE



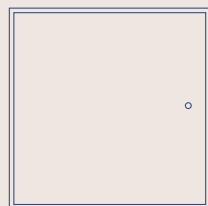
1001

WITH SHELVES



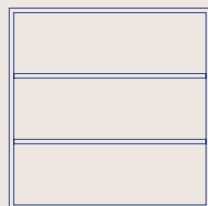
1002

WITH DOOR



1003

WITH SHELVES



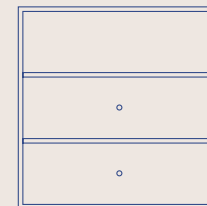
1004

WITH 1 DRAWER



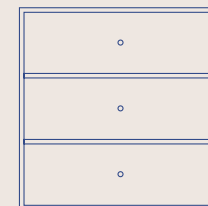
1005

WITH 2 DRAWERS

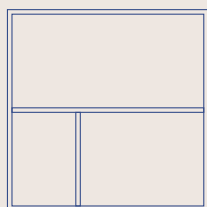


1006

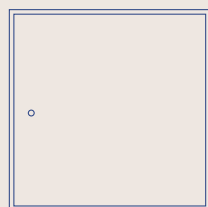
WITH 3 DRAWERS



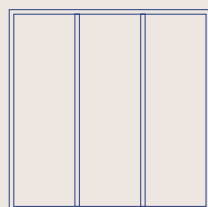
1007



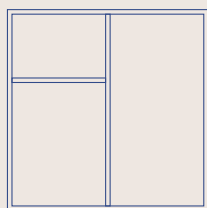
1102



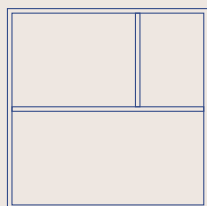
1103



1104



1202



1302

Front view



TOP PANEL - SINGLE
2004



TOP PANEL - DOUBLE
2005

Front view



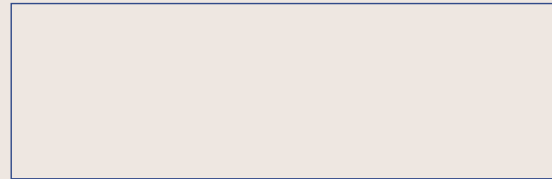
PLINTH H 3 cm
MPLI

Top view

35 cm



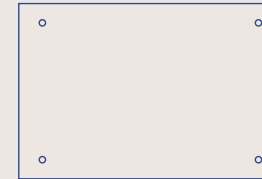
70 cm



25 cm

Top view

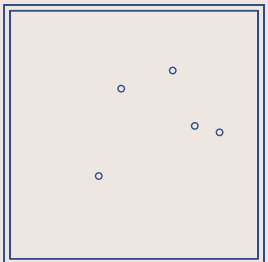
35 cm



25 cm

Front view

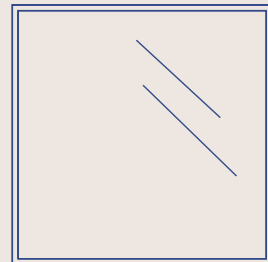
35 cm



35 cm

NOTICE BOARD
MBOARD

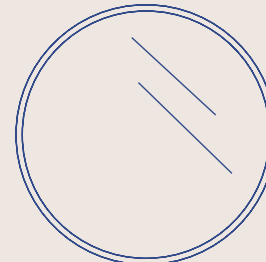
35 cm



35 cm

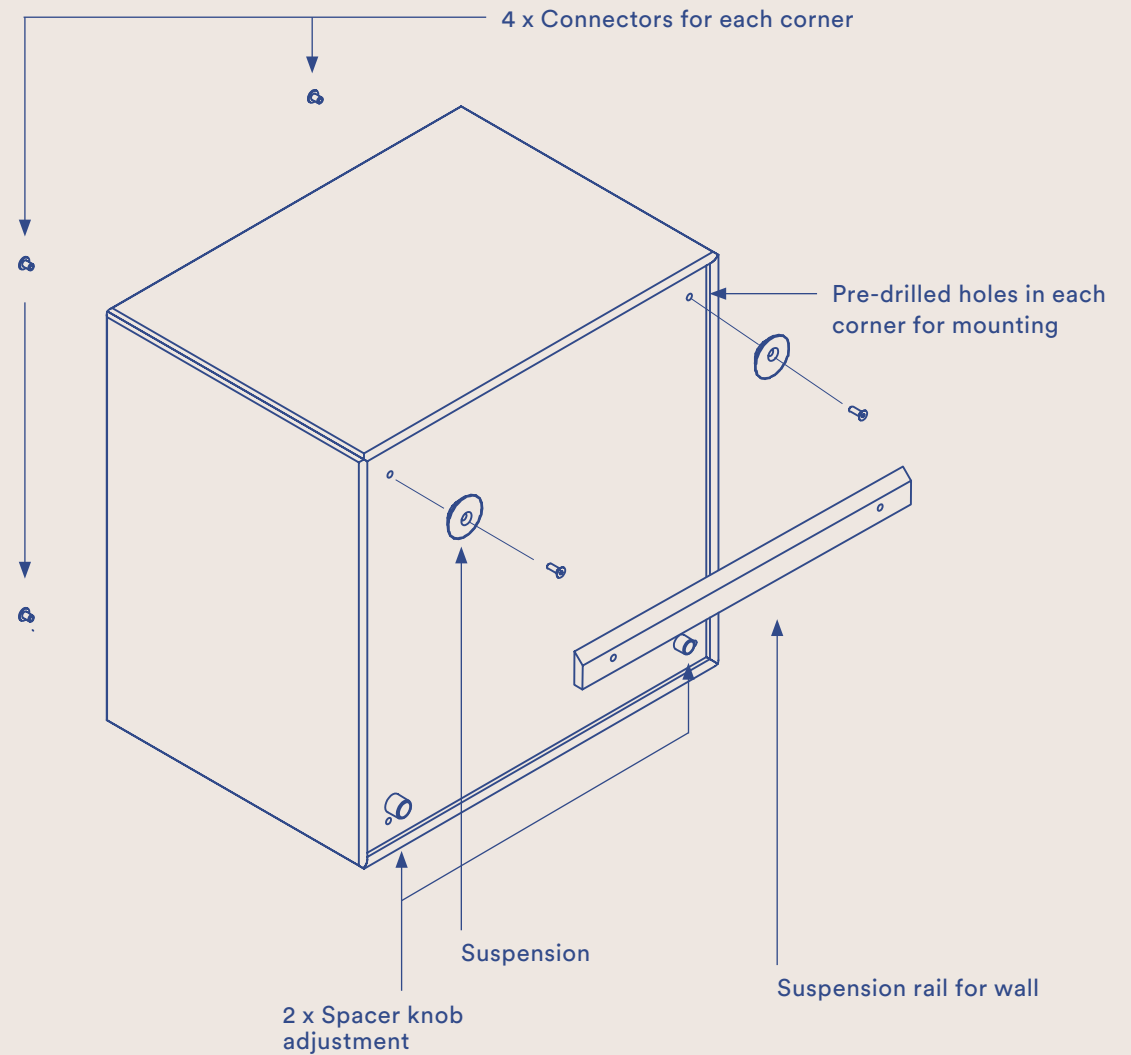
MIRROR SQUARE
MSQ

Ø 35 cm



MIRROR ROUND
MCI

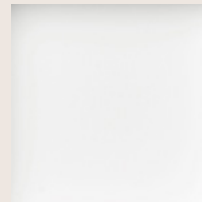
All Minis now come with pre-drilled holes for mouting and the suspension. A plinth can be purchased for modules placed on the floor.



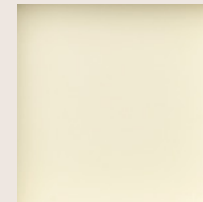
MATCH MINI TO A COLOUR

**Colours are never static,
never boring,
never quite the same.**

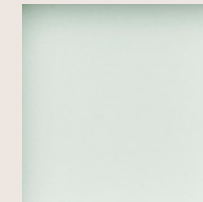
They interact with sunlight, with other colours in their surroundings and the items you add to them. The Montana Mini colour palette features 10 poetic and complex colours, developed in collaboration with colour expert Margrethe Odgaard, to have both a visual and sensory appeal, all intertwined in a close-knit family that will match no matter how you choose to combine them.



101 New White



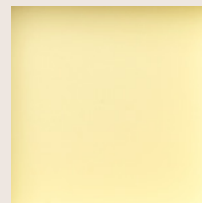
150 Vanilla



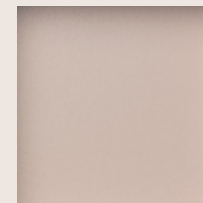
161 Mist



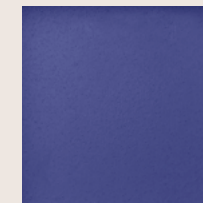
09 Nordic



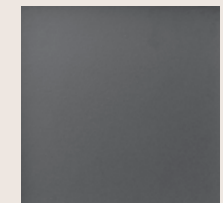
159 Camomile



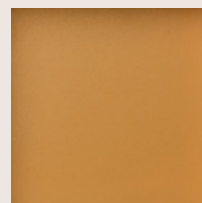
137 Mushroom



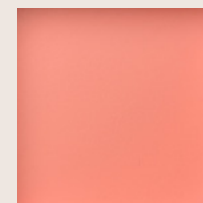
135 Monarch



04 Anthracite

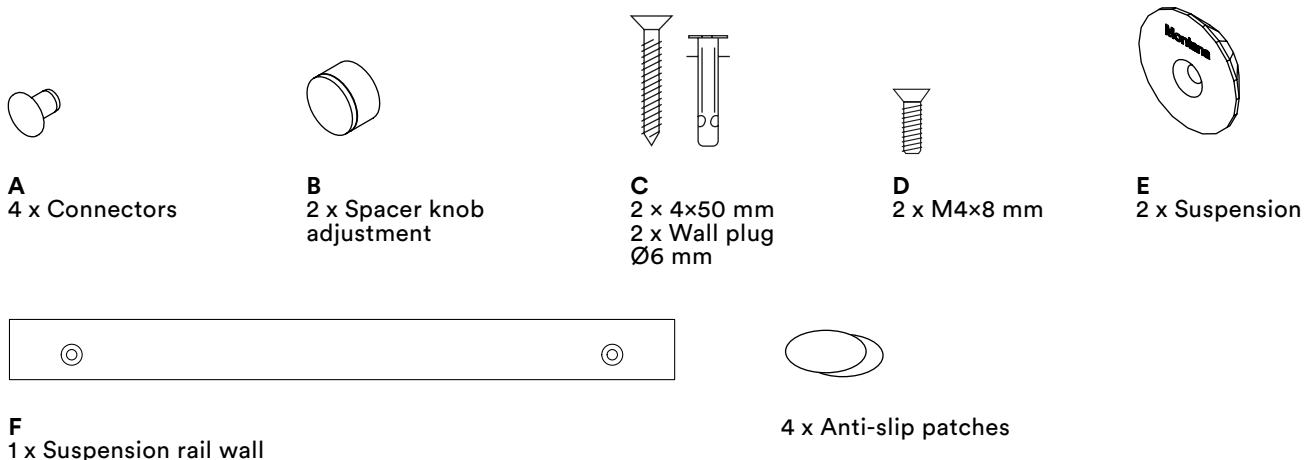


142 Amber



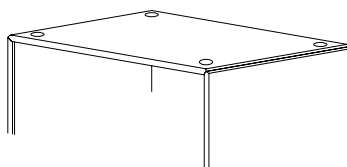
151 Rhubarb

CONTENT



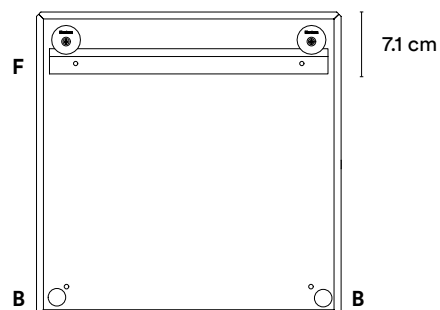
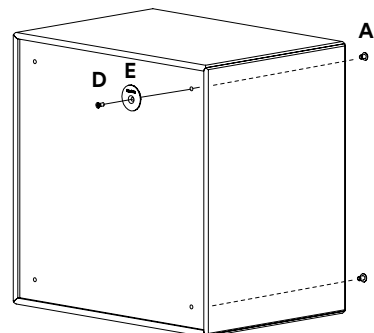
STACKED SHELVING

Anti-slip patches are used for securing between stacked shelving.

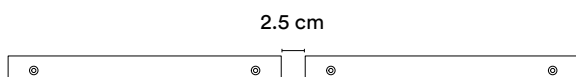


ASSEMBLY ON THE WALL

1. Mount the suspension (E) on the back of the module with connectors (A) and screws (D).
2. Assemble both adhesive spacer knobs on the back of the bookcase in the bottom corners.
3. Place the suspension rail (F) on the wall - check that it is level. Mark positions of where you want to drill two holes in the wall Ø: 8 mm for the suspension rail.
4. Attach the suspension rail (F) to the wall using the screws (C) and mount the module on the suspension rail.
5. Now adjust the module horizontally by turning the round suspensions (E) on the module. The spacer knobs (B) in the bottom corners can also be adjusted by turning them.



ASSEMBLY – SIDE BY SIDE



TECHNICAL SPECIFICATIONS

Dimensions: W 35 cm x H 35 cm x D 25 cm

Load: 10 kg - Evenly distributed in the module.

Maintenance: montanafurniture.com/maintenance

Assembly instructions: montanafurniture.com/montana-guides